

INSTALLATION INFORMATION

PRIOR TO INSTALLATION:

1. Read all installation instructions carefully, before proceeding.
2. Carefully remove fixture from packaging, preventing scratching or damage.
3. Units with -SO, -SOC option require six AA alkaline batteries (Not Provided).
4. Provide mounting surface, sufficient to support the fixture and loads on the fixture.
5. Provide rough-ins as shown on the roughing-in and dimensional drawing, including water supply and drain pipe.
6. Completely flush water supply lines of all foreign debris, before connecting to the fixture.

INSTALLATION: (see drainage & mounting roughing-in)

1. Create sufficient Blockout Area and mounting preparation according to Rough-In and Dimensional Drawing.
2. Mount and secure Wall Mounting Plate to wall horizontally level as shown in Rough-In and Technical Dimensions.
NOTE: Adjust height of bracket if fixture height required differs from dimensions shown.
WARNING: Wall Mounting Plate **MUST** be securely anchored to wall with fasteners sufficient to support a minimum pull-out rating of 1000lbs (454kg).
3. Remove Bottle Filler Bottom Access Panel and set aside in a safe place. Save the screws in a secure location for re-use in later stages of installation.
4. Prepare Fixture Assembly for mounting by ensuring all supply and waste connections are securely attached and ensuring that the 1/2"-13 x 2" Long Bolts (Provided) are loosely attached to the fixture.
5. Mount and secure Fixture Assembly to Wall Mounting Plate by making sure that all four 1/2"-13 x 2" Long Bolts (Provided) align and secure successfully.
6. Make up 3/8" OD Supply Connection to water supply, and 1-1/4" OD waste to P-Trap (by others). Attach Bottle Filler Bottom Access Panel using previously set-aside screws.

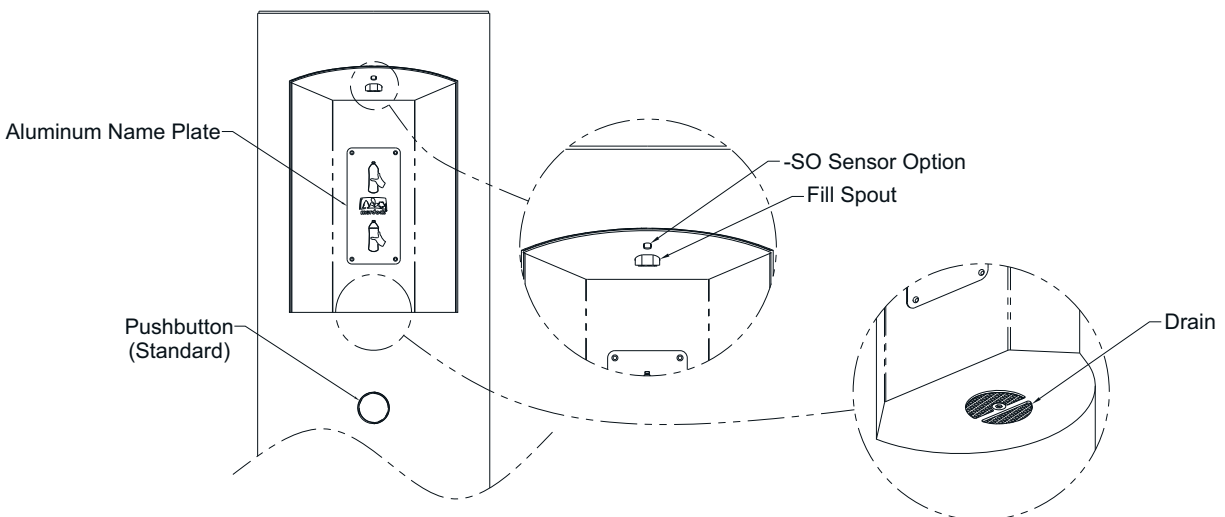
START UP:

Air within the bottle filler system or the structure supply piping will cause an irregular spout outlet stream until purged out by incoming water. Press and hold pushbutton until steady water stream is achieved.

OPERATION INSTRUCTIONS:

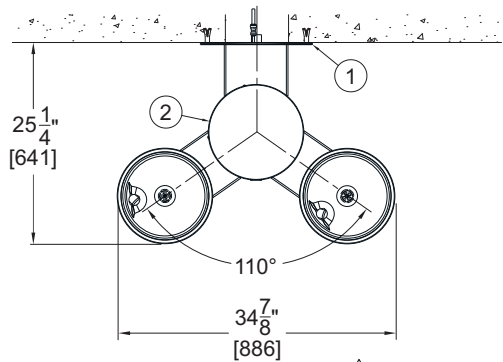
Hand operation: Hold container to be filled just below the filler tube in the center of the unit, then depress pushbutton. When the container is almost filled, release the pushbutton. Refer to Flow Adjustment detail on Parts Drawing if needed.

Sensor Operation: Hold container to be filled just below the sensor in the center of the filler spout and then move the container upward and water flow will start automatically. When the container is almost filled, lower the container below the sensor until the water stops flowing. (See label on the bottle filler)



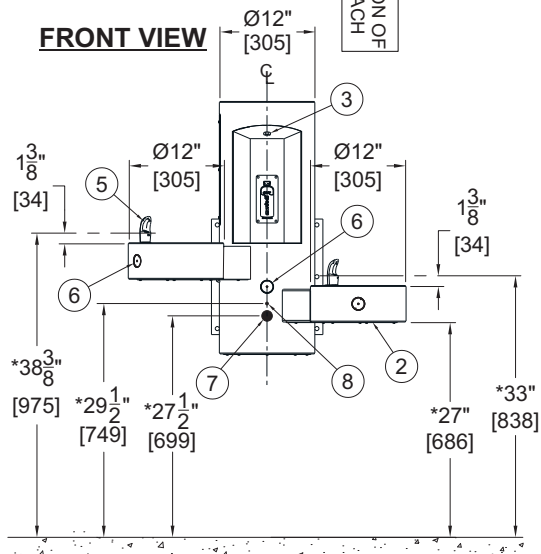
ROUGH-IN AND TECHNICAL DIMENSIONS

TOP VIEW

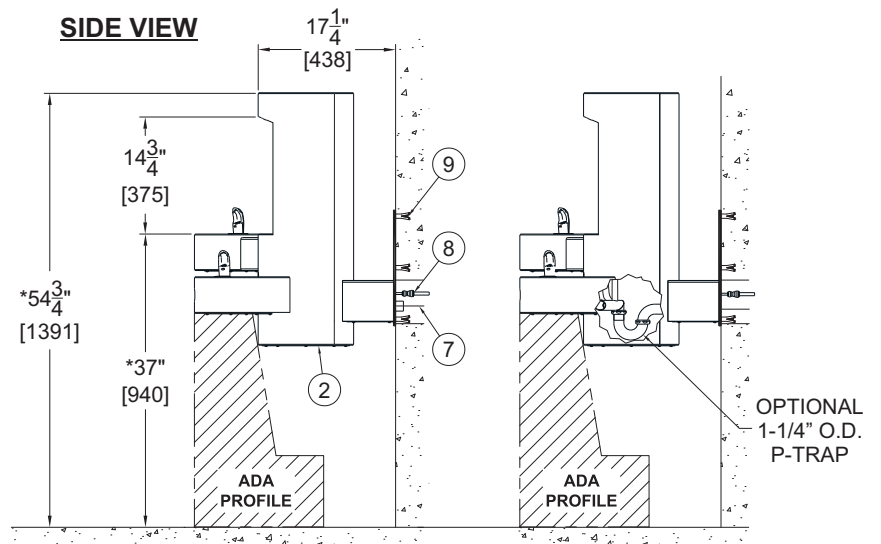


* Valve specifications:
Minimum/Maximum
Pressure 30 to 100 psi.

FRONT VIEW



SIDE VIEW



GYE24 SHOWN

GENERAL NOTES:

1. ALL DIMENSIONS ARE IN INCHES [MM].
- *2. DIMENSIONS SHOWN ARE FOR RECOMMENDED ADULT HEIGHT. ADJUST VERTICAL DIMENSIONS AS NECESSARY TO COMPLY WITH FEDERAL, STATE, & LOCAL CODES.
3. STOP VALVE NOT PROVIDED.

GENERAL NOTES:

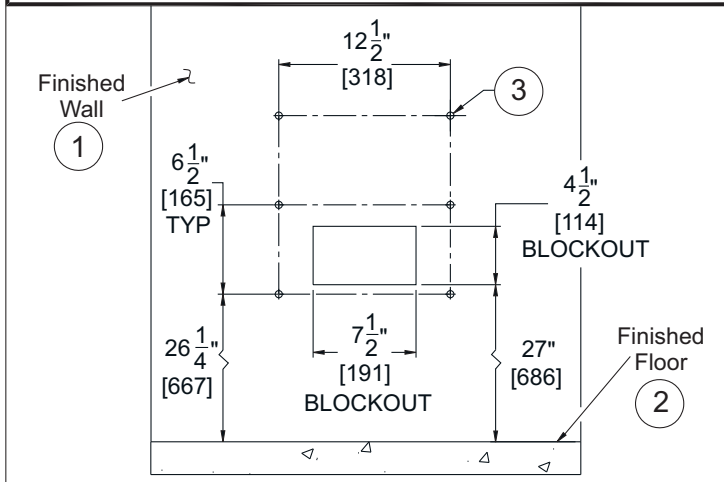
1. 1/4" THICK MOUNTING PLATE
2. REMOVABLE ACCESS PANELS
3. BOTTLE FILLER SPOUT
4. BOTTLE FILLER PUSHBUTTON
WITH CARTRIDGE VALVE
5. DRINKING BUBBLER
6. DRINKING FOUNTAIN PUSHBUTTON
WITH CARTRIDGE VALVE

ROUGH-IN NOTES:

7. 1-1/4" O.D. WASTE OUTLET FOR P-TRAP
BEHIND WALL (STANDARD) P-TRAP
PROVIDED BY OTHERS
8. 3/8" O.D. SUPPLY CONNECTION
9. 1/2" DIAMETER INSTALLER PROVIDED WALL
ANCHORS AND ANCHORING HARDWARE

FIXTURE MOUNTING AND ANCHORING

- 1 Make up Mounting Rough-In and Blockout Area into sufficient wall backing.

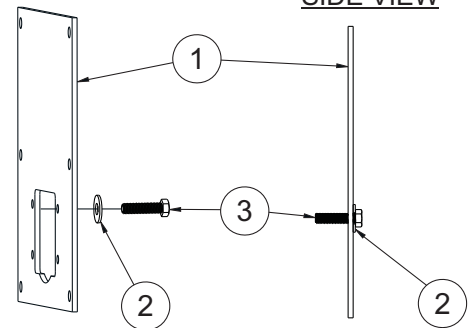


IMPORTANT: Industry standard wall backing for wall hung fixtures is required. Installer provided wall anchors and wall anchoring hardware must be appropriate for wall construction and have a minimum pull-out rating of 1000lbs (454kg).

- 1 Finished Wall
- 2 Finished Floor
- 3 Ø1/2" Wall Anchors (Not Provided)

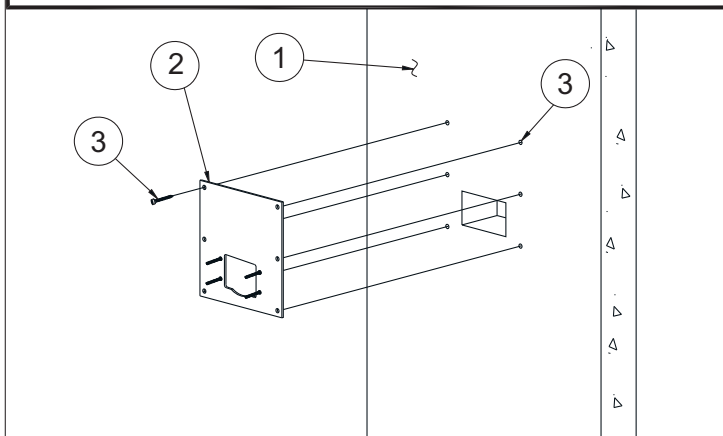
- 2 Install 1/2"-13 x 2" Long Bolts (Provided) into the Mounting Plate from rear.

SIDE VIEW



- 1 Mounting Plate
- 2 1/2" Flat Washer
- 3 1/2"-13 x 2" Long Bolts (Provided)

- 3 Secure Wall Mounting Plate to the Finished Wall using Installer Provided Hardware.

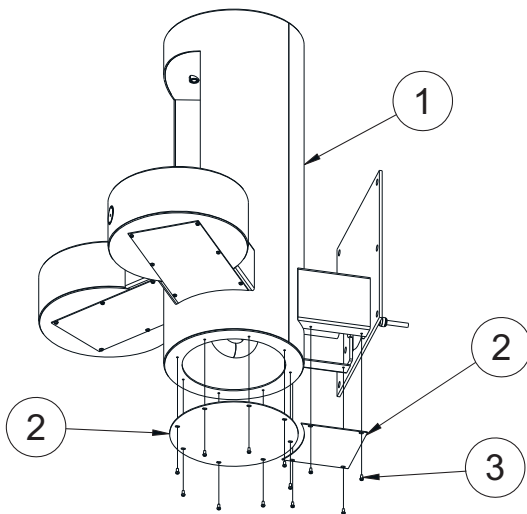


NOTE: It is recommended to level and plumb Wall Mounting Plate prior to mounting Fixture Assembly.

- 1 Finished Wall
- 2 Mounting Plate
- 3 Ø1/2" Installer Provided Wall Fasteners/Anchors

FIXTURE MOUNTING AND ANCHORING (CONTINUED)

- 4** Remove Bottle Filler Bottom Access Panel and set aside for later Installation.

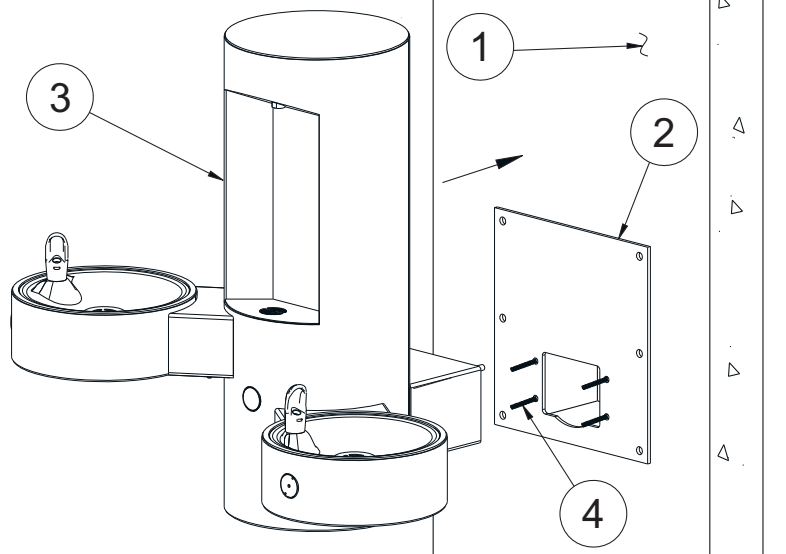


- 1 Fixture Assembly
- 2 Bottle Filler Bottom Access Panels
- 3 #10-32 UNF Hex Screws (Provided)



NOTE: It is recommended to level and plumb the Fixture Assembly prior to Securing Fixture Assembly to Mounting Plate.

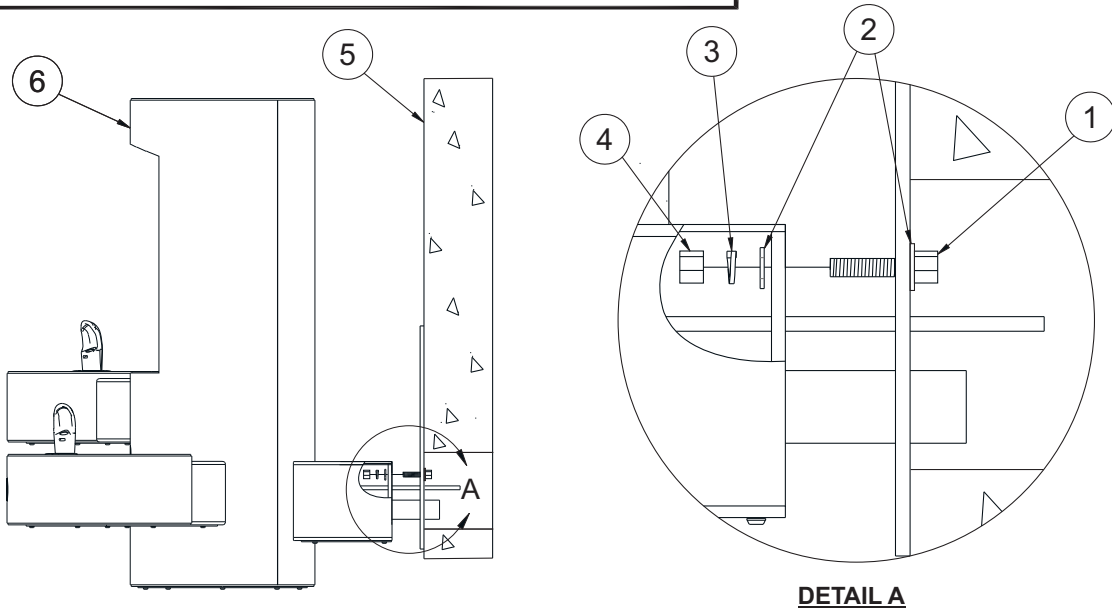
- 5** Mount Fixture Assembly onto the Mounting Plate by sliding unit over the 1/2"-13 x 2" Long Bolts.



- 1 Finished Wall
- 2 Mounting Plate
- 3 Fixture Assembly
- 4 1/2"-13 x 2" Long Bolts (Provided)

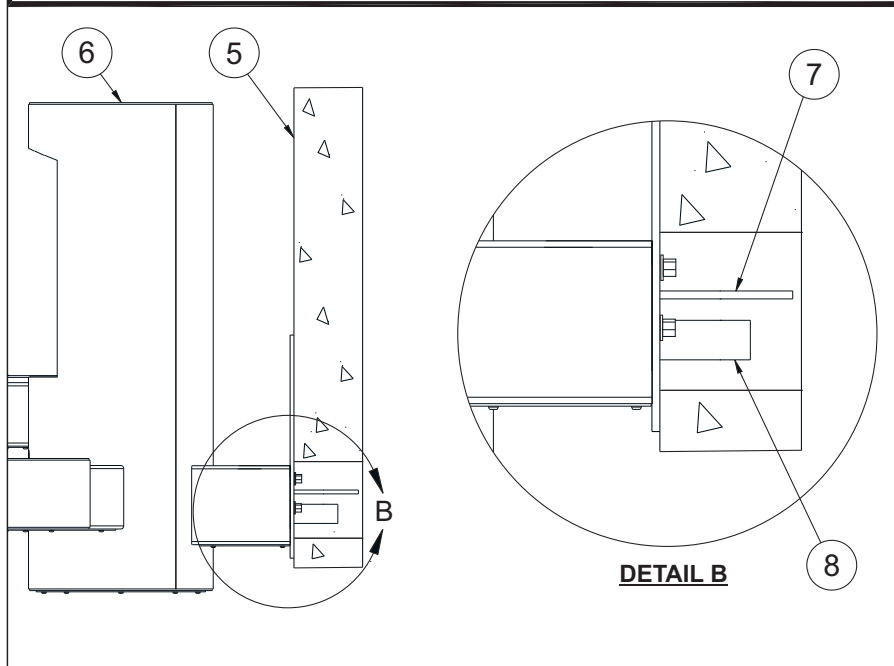
FIXTURE MOUNTING AND ANCHORING (CONTINUED)

6 Secure Fixture Assembly to Mounting Plate using 1/2" Hardware (Provided).



7A

Make up 3/8" OD Supply Connection to water supply, and 1-1/4" OD waste to P-Trap (by others). Attach Bottle Filler Bottom Access Panel using previously set-aside screws.

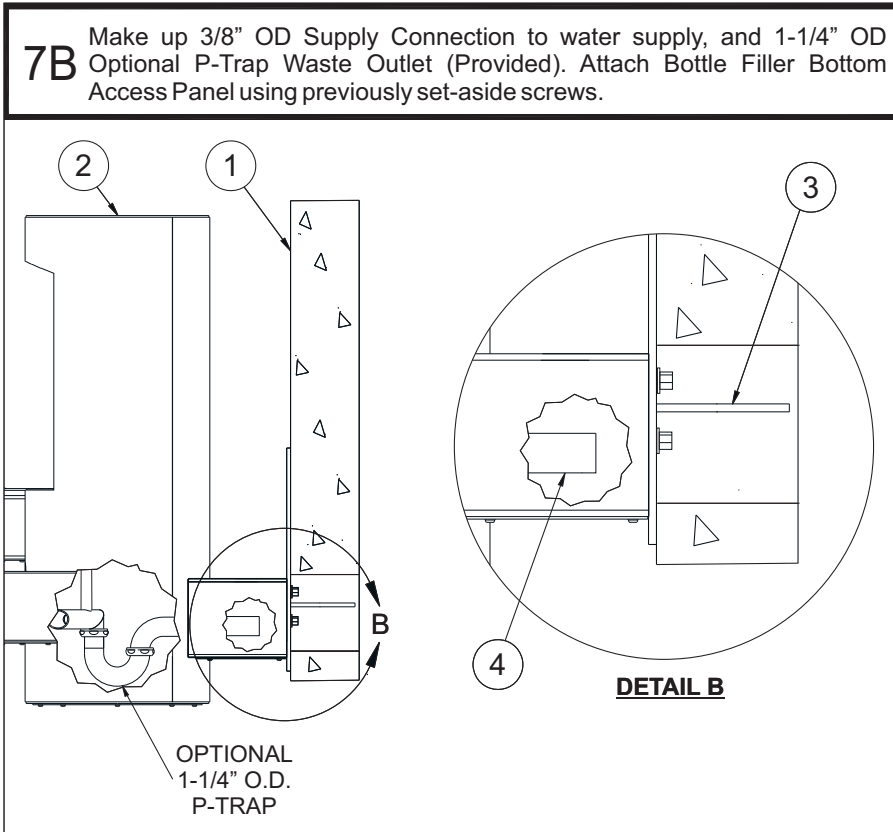


STANDARD MODELS

- ① 1/2"-13 x 2" Long Bolts (Provided)
- ② 1/2" Flat Washers (Provided)
- ③ 1/2" Helical Lockwasher (Provided)
- ④ 1/2"-13 UNC Hex Nut (Provided)
- ⑤ Finished Wall
- ⑥ Fixture Assembly
- ⑦ 3/8" OD Supply Connection
- ⑧ 1-1/4" OD Waste Outlet for P-Trap Behind Wall (Standard) P-Trap provided by others

NOTE: FOR MODELS WITH (-PT) P-TRAP OPTION, REFER TO STEP 7B.

FIXTURE MOUNTING AND ANCHORING (CONTINUED)



MODELS WITH -PT OPTION

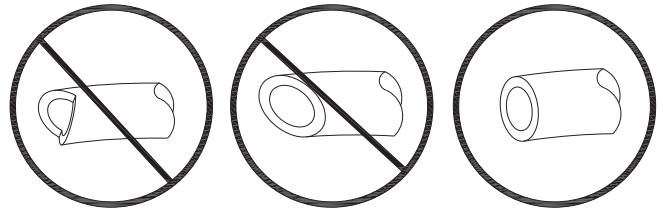
- ① Finished Wall
- ② Fixture Assembly
- ③ 3/8" OD Supply Connection
- ④ 1-1/4" OD Waste Outlet with
Optional P-Trap (Provided)

PUSH-IN FITTING INSTALLATION

NOTE: FITTINGS AND TUBE SHOULD BE KEPT CLEAN, BAGGED AND UNDAMAGED PRIOR TO INSTALLATION.

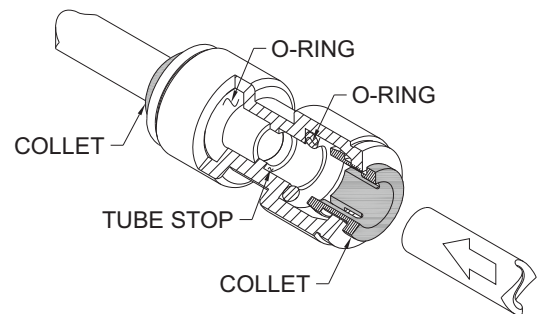
TO CUT TUBE:

Cut to fit length of 1/4" PE tubing and remove any burrs or sharp edges. Ensure that the outside diameter is free from score marks. Tube ends should be square.

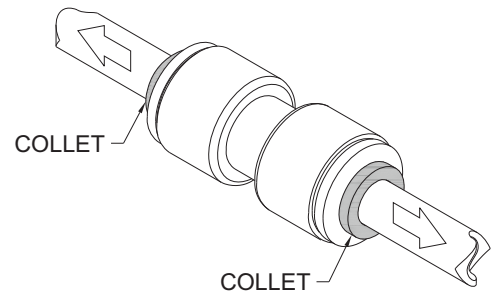


INSERTING THE TUBE:

1. Firmly and fully insert the tubing end into the push-in fitting up to the tube stop located approximately 1/2" deep.

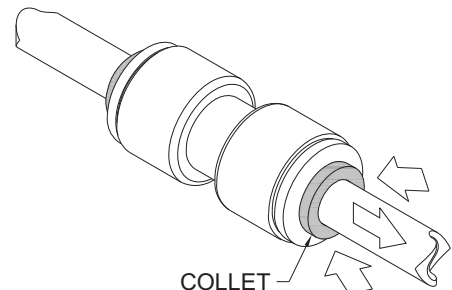


2. Pull on the fitted tubing to ensure it is secure. Tube should not come free from the fitting. Water test the connection assembly prior to leaving the site to ensure there are no leaks.



DISCONNECTING THE TUBE:

To disconnect the tube from the fitting ensure that the water line is depressurized. Push collet square towards the push-in fitting body and hold. While holding the collet in, pull on the PE tubing to remove from the push-in fitting.



TROUBLESHOOTING AND MAINTENANCE

TROUBLESHOOTING:

1. RESTRICTED OR NO WATER FLOW:

- a. Ensure Water Supply service stop valve is fully open.
- b. Verify minimum 20 psig supply line flow pressure.
- c. Check for twist or kinks in spout tubing.
- d. Check the water inlet "Y" strainer. Sediment from the main supply can get trapped in the screen along with installation materials such as pipe dope and flux. The screen should be cleaned and checked on a regular basis and replace if needed.
- e. Flow control in solenoid valve outlet elbow clogged remove & clean.

SENSOR TROUBLESHOOTING:

1. IF LIGHT WITHIN SENSOR DOES NOT FLASH ONCE WHEN USER IS WITHIN RANGE:

- a. Verify 9VDC output of battery pack.
- b. Replace defective batteries.
- c. Sensor in "Security Mode" after 30 seconds of constant detection. Remove source of detection and wait 30 second before checking.
- d. Sensor is picking up a highly reflective surface. Eliminate cause of reflection and wait 30 seconds before checking.

2. IF LIGHT WITHIN SENSOR LENS FLASHES ONCE WHEN THE USER IS WITHIN RANGE:

- a. Repair bad connection from sensor to solenoid.
- b. There is debris or scale in the solenoid assembly. Remove solenoid, pull out plunger and spring. Clean with scale remover solution.
- c. There is debris or scale in center or two holes in convolution of the water diaphragm. Remove and clean.

CLEANING & MAINTENANCE GUIDE:

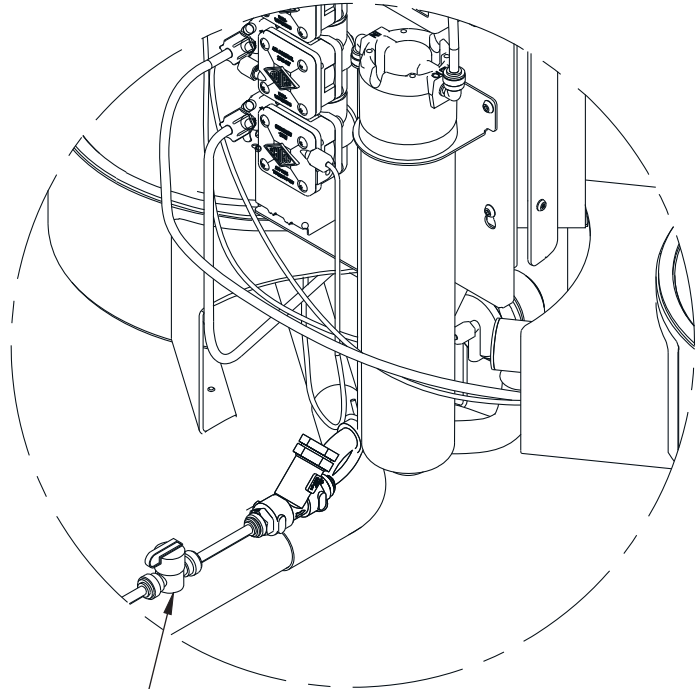
For Powder coated units: Units should be cleaned using a mild soap solution with a sponge or cotton cloth. Wipe down surfaces then rinse with clean water.

For Stainless steel units:

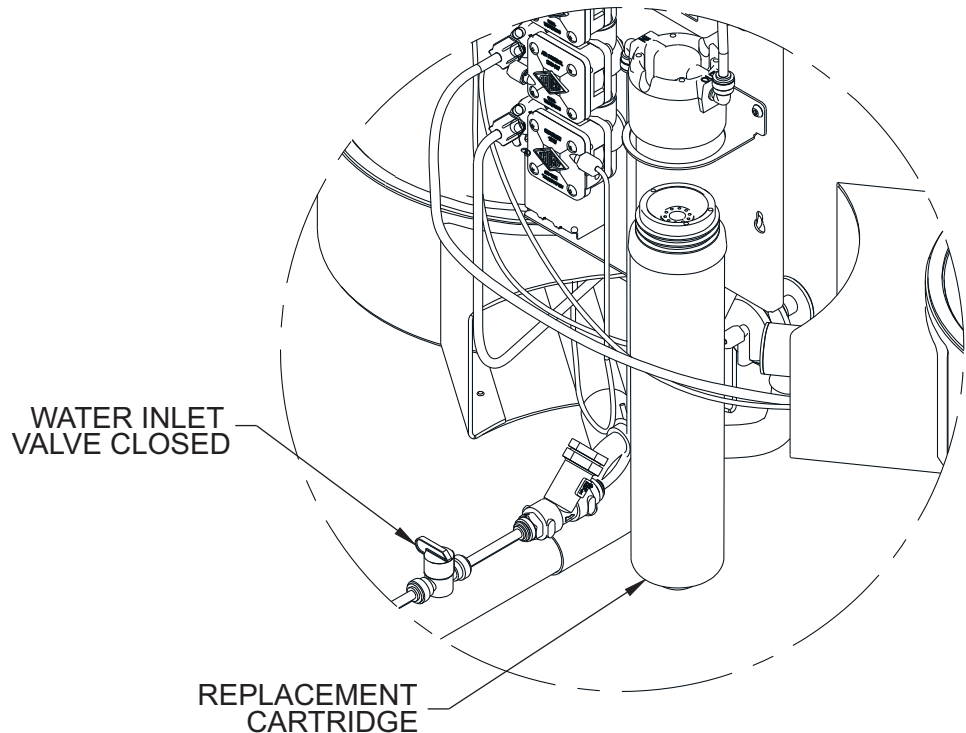
1. To remove water spots or rust spots, stainless steel cleaner/polish on a cloth is recommended.
2. If there are stubborn spots or if you wish to treat a scratch, synthetic abrasive general purpose pads such as scotch brite are recommended.
3. Apply stainless steel cleaner/polish to the synthetic abrasive pads and carefully rub the panel with the grain.
4. DO NOT use harsh chemicals, abrasive or petroleum based cleaners. Use of these will void the Murdock warranty. DO NOT use abrasives on powder coated units.
5. Stainless steel should be kept clean at all times. If a coating of stainless steel cleaner/polish is maintained, stainless steel surfaces will retain their new, clean & polished appearance indefinitely.
6. Periodically remove access panel of cooler and clean out inline "Y" strainer

BOTTLE FILLER FILTER CARTRIDGE REPLACEMENT

1. Loosen and remove bottle filler side access panel, which allows access to the filter. Turn the inlet valve 1/4 turn clockwise to close.
2. Raise the filter assembly straight up about six inches and while holding the cap firmly, turn the replaceable cartridge filter counterclockwise to remove.
3. Remove and replace the cartridge turning clockwise to secure.
5. Turn inlet valve 1/4 turn counterclockwise to open and test for leaks and proper operation before re-attaching bottle fillers side access panel.



WATER INLET
VALVE OPEN



WATER INLET
VALVE CLOSED

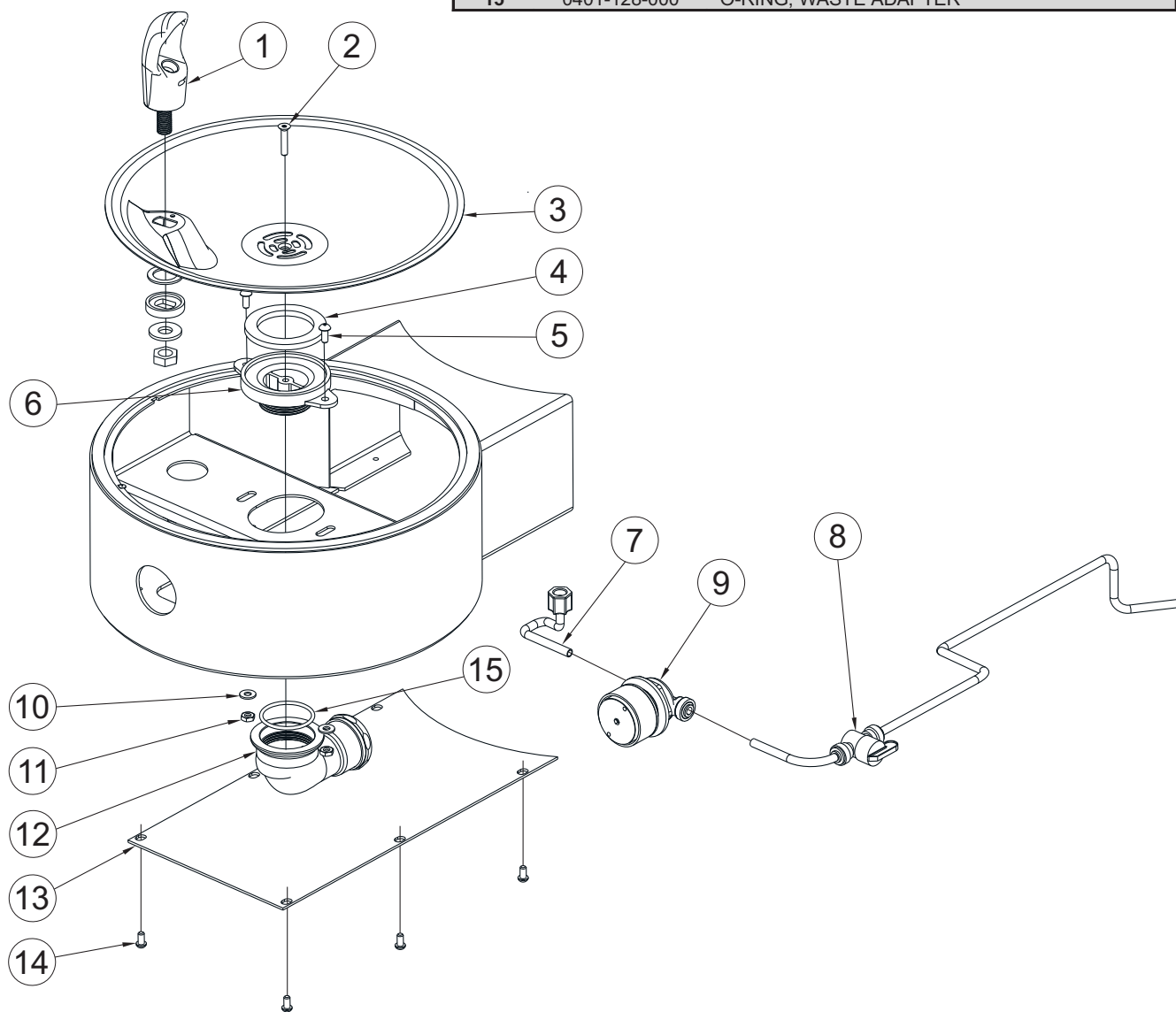
REPLACEMENT
CARTRIDGE

DRINKING FOUNTAIN

ASSEMBLY:

Extended Arms, Pushbutton
(Standard), Repair Parts

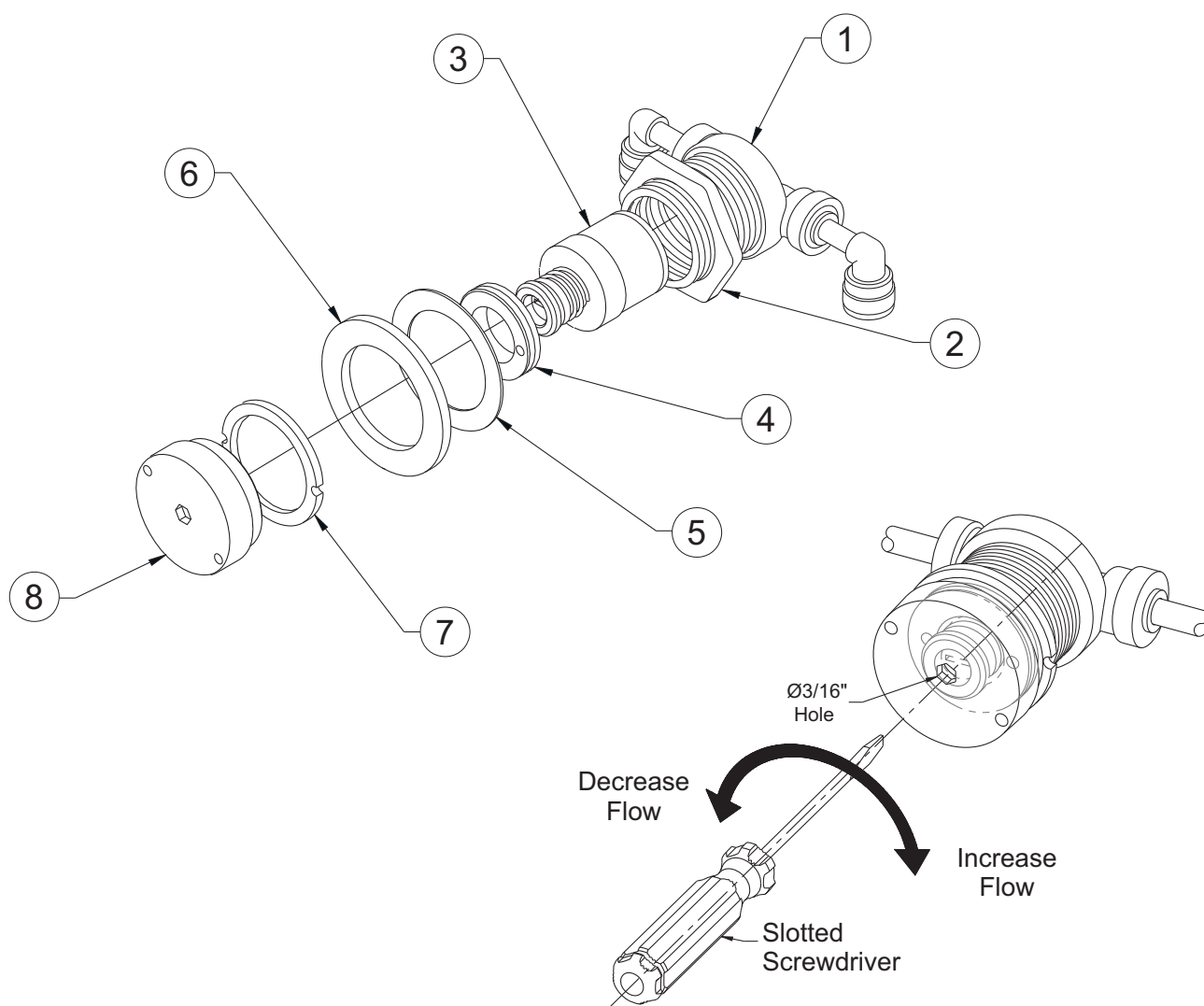
ITEM	PART NUMBER	DESCRIPTION
1	7000-012-001	DRINKING BUBBLER ASSY, 7/16-20 UNF, SS
2	0152-010-000	#10-32 UNF x 1" LONG HEX FLAT HEAD SCREW
3	7007-011-001	11" DIAMETER ROUND BOWL, SS
4	7000-006-000	FLAT FOAM ADAPTER GASKET
5	0116-003-000	#10-32 UNF x 1/2" LONG PHILLIPS HEAD SCREW
6	7000-005-199	1-1/4" NPSM DRAIN ADAPTER
7	2169-000-000	1/4" OD LDPE TUBING
8	7000-420-000	1/4 TURN SHUTOFF VALVE
9	7000-065-001	-CV RECESSED PB W/ CARTRIDGE VALVE ASSY
10	0331-004-000	#10 FLAT WASHER, SS
11	0302-004-000	#10-32 UNF HEX NUT, SS
12	7000-017-001	1-1/4" CLOSE ELBOW, SLIP JOINT
13	JSMBF108-199	ACCESS PLATE, ROUND SIDE MOUNT
14	0112-001-000	#10-32 UNF x 3/8" LONG HEX SCREW
15	0401-128-000	O-RING, WASTE ADAPTER



DRINKING FOUNTAIN
CARTRIDGE VALVE
PUSHBUTTON ASSEMBLY:

Repair Parts

ITEM	PART NUMBER	DESCRIPTION
1	7000-050-000	REGULATOR VALVE BODY
2	7000-053-199	JAM NUT, 1-1/4"
3	7000-060-000	FLOW REGULATOR CARTRIDGE (0.5 GPM)
4	7000-051-000	RETAINING NUT, VALVE
5	0411-022-000	FIBER RING 1-3/4" x 1-1/4"
6	0431-222-000	RUBBER GASKET
7	7000-063-199	BRASS RETAINER RING
8	7000-091-001	RECESSED PUSH BUTTON W/ HEX ASSY

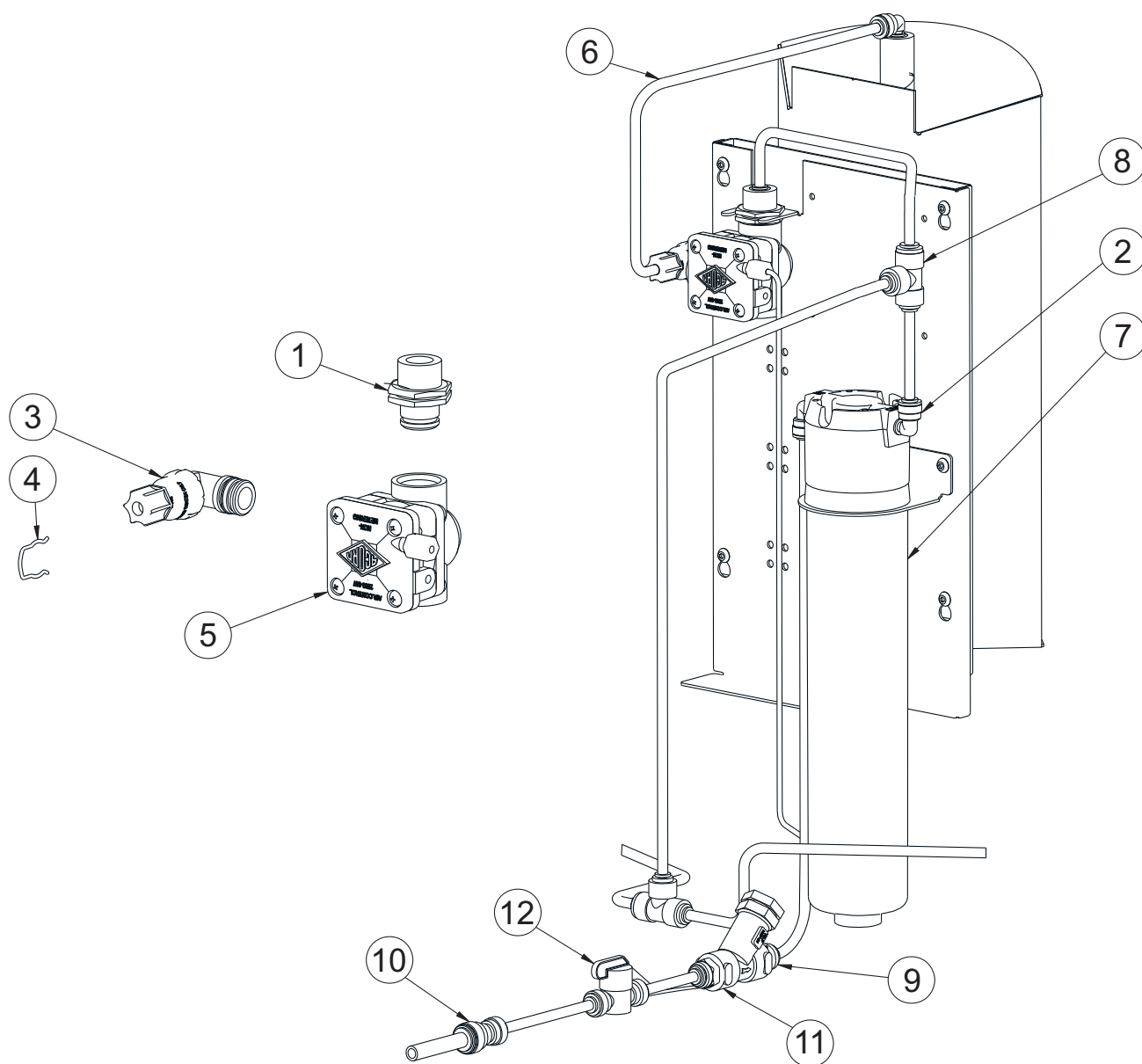


FLOW ADJUSTMENT

BOTTLE FILLER
VALVE ASSEMBLY:

Pushbutton (Standard),
 Repair Parts

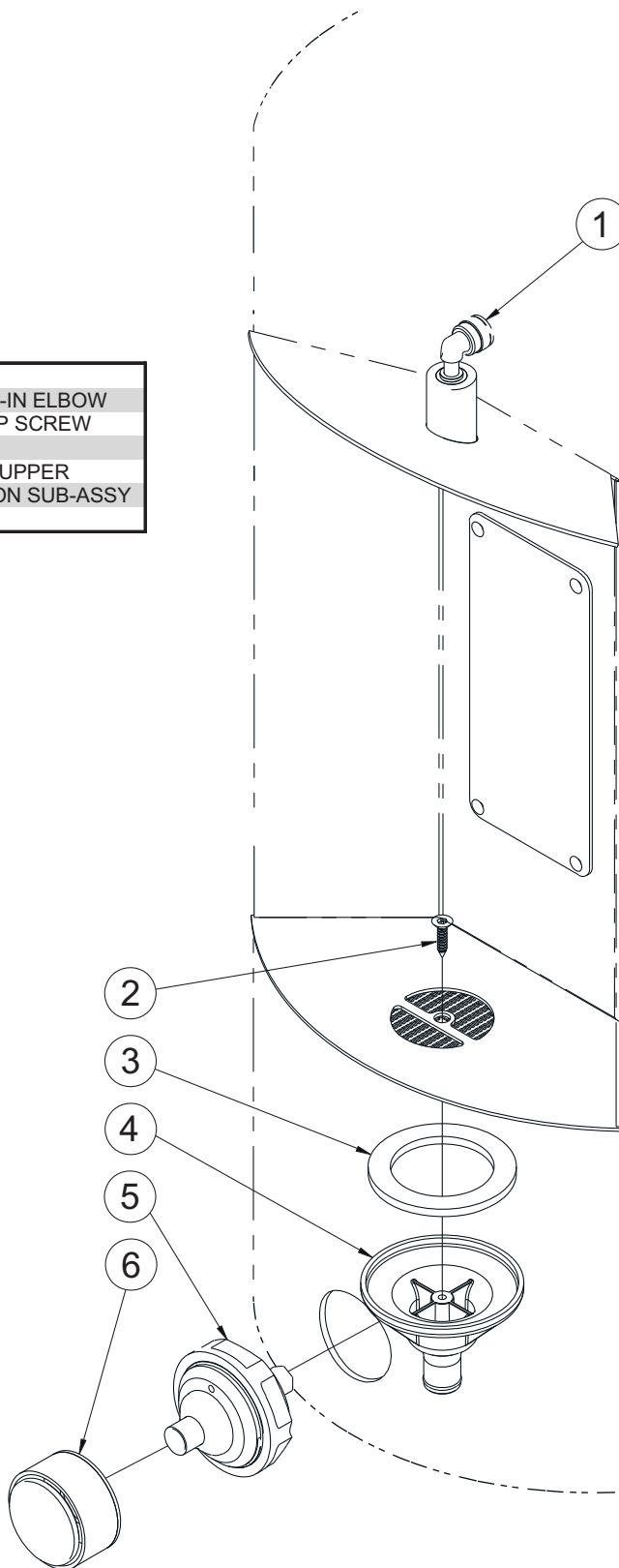
ITEM	PART NUMBER	DESCRIPTION
1	2800-108-001	1/4" JACO INLET ADAPTER ASSEMBLY
2	1895-709-000	1/4" OD x 1/4" OD STEM PUSH-IN ELBOW
3	2570-051-001	1/4" OD PLASTIC ELBOW ASSEMBLY
4	0326-100-000	RETAINING CLIP, AIR-CONTROL VALVE
5	2570-102-001	RH VALVE BODY CLOSED END ASSEMBLY
6	2169-000-000	1/4" OD LLDPE TUBING (BLUE)
7	7012-313-000	WF1 FILTER 1500 GALLON CARTRIDGE
8	1895-710-000	1/4" PUSH-IN UNION TEE
9	7000-021-000	1/4" NPT "Y" STRAINER
10	1895-123-000	1/4" x 3/8" OD TUBE UNION PUSH-IN CON
11	1895-125-000	1/4" OD x 1/4" NPT PUSH-IN FITTING
12	7000-420-000	1/4" OD PUSH-IN 1/4" TURN SHUT-OFF VALVE



BOTTLE FILLER ASSEMBLY:

Pushbutton (Standard), Repair Parts

ITEM	PART NUMBER	DESCRIPTION
1	1895-709-000	1/4" OD x 1/4" OD STEM PUSH-IN ELBOW
2	0124-033-000	#8 x 3/4" LONGHD SELF-TAP SCREW
3	7000-006-000	DRAIN ADAPTER GASKET
4	7003-182-000	ACCESS DRAIN, BI-LEVEL, UPPER
5	2566-050-002	BACK OUTLET PUSHBUTTON SUB-ASSY
6	7002-125-002	PUSHBUTTON WELD ASSY

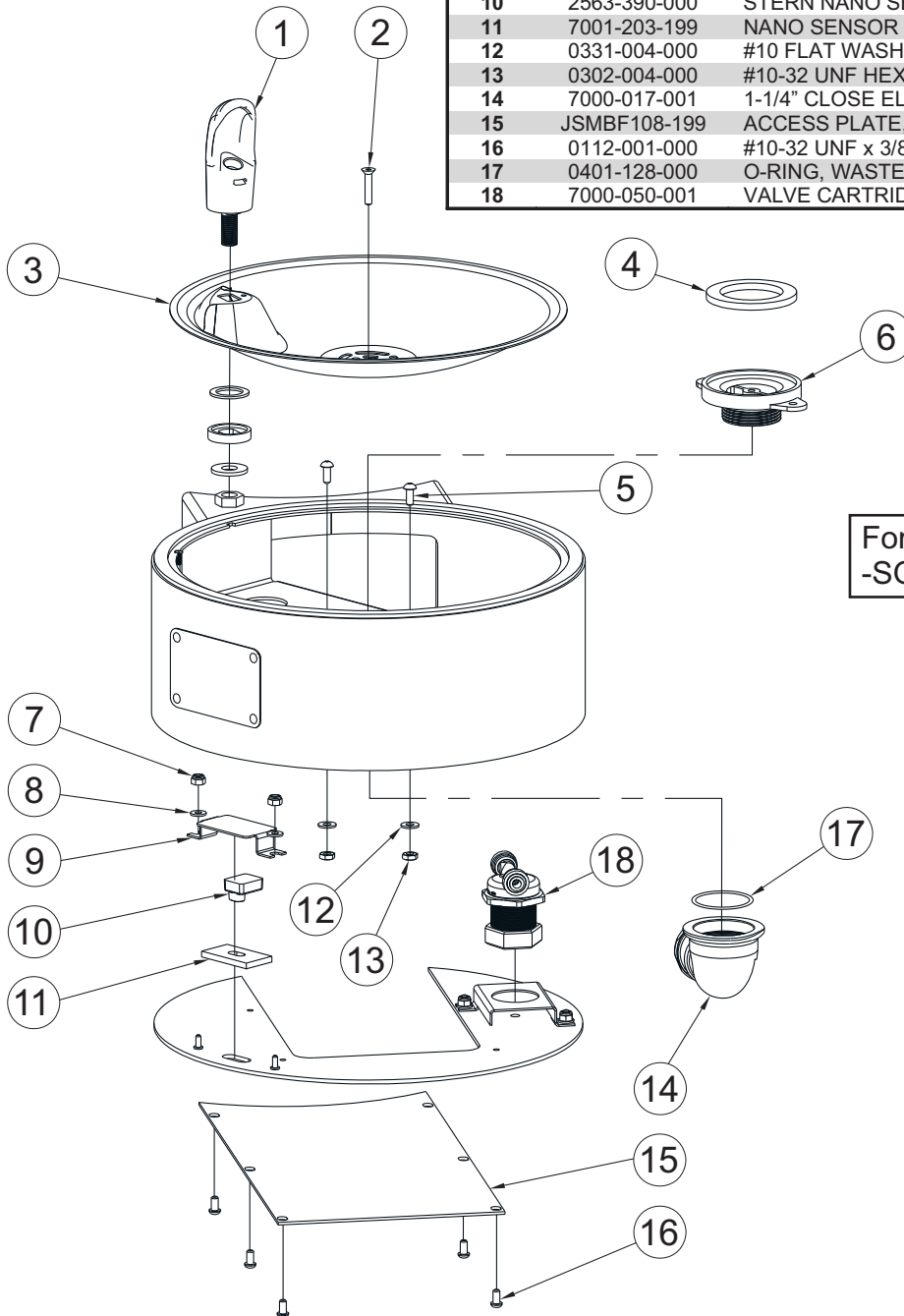


DRINKING FOUNTAIN

ASSEMBLY:

Extended Arms, Optional Sensor
Operation, Repair Parts

ITEM	PART NUMBER	DESCRIPTION
1	7000-012-001	DRINKING BUBBLER ASSY, 7/16-20 UNF, SS
2	0152-010-000	#10-32 UNF x 1" LONG HEX FLAT HEAD SCREW
3	7007-011-001	11" DIAMETER ROUND BOWL, SS
4	7000-006-000	FLAT FOAM ADAPTER GASKET
5	0116-003-000	#10-32 UNF x 1/2" LONG PHILLIPS HEAD SCREW
6	7000-005-199	1-1/4" NPSM DRAIN ADAPTER
7	0308-009-000	#8-32 NYLON LOCKNUT
8	0331-023-000	SS WASHER
9	7003-958-199	NANO SENSOR HOLD DOWN BRACKET
10	2563-390-000	STERN NANO SENSOR, BLUE 10 SEC
11	7001-203-199	NANO SENSOR SPACER W/ BUSHING
12	0331-004-000	#10 FLAT WASHER, SS
13	0302-004-000	#10-32 UNF HEX NUT, SS
14	7000-017-001	1-1/4" CLOSE ELBOW, SLIP JOINT
15	JSMBF108-199	ACCESS PLATE, ROUND SIDE MOUNT
16	0112-001-000	#10-32 UNF x 3/8" LONG HEX SCREW
17	0401-128-000	O-RING, WASTE ADAPTER
18	7000-050-001	VALVE CARTRIDGE ASSEMBLY



For models with optional
-SOC Sensor Operation.

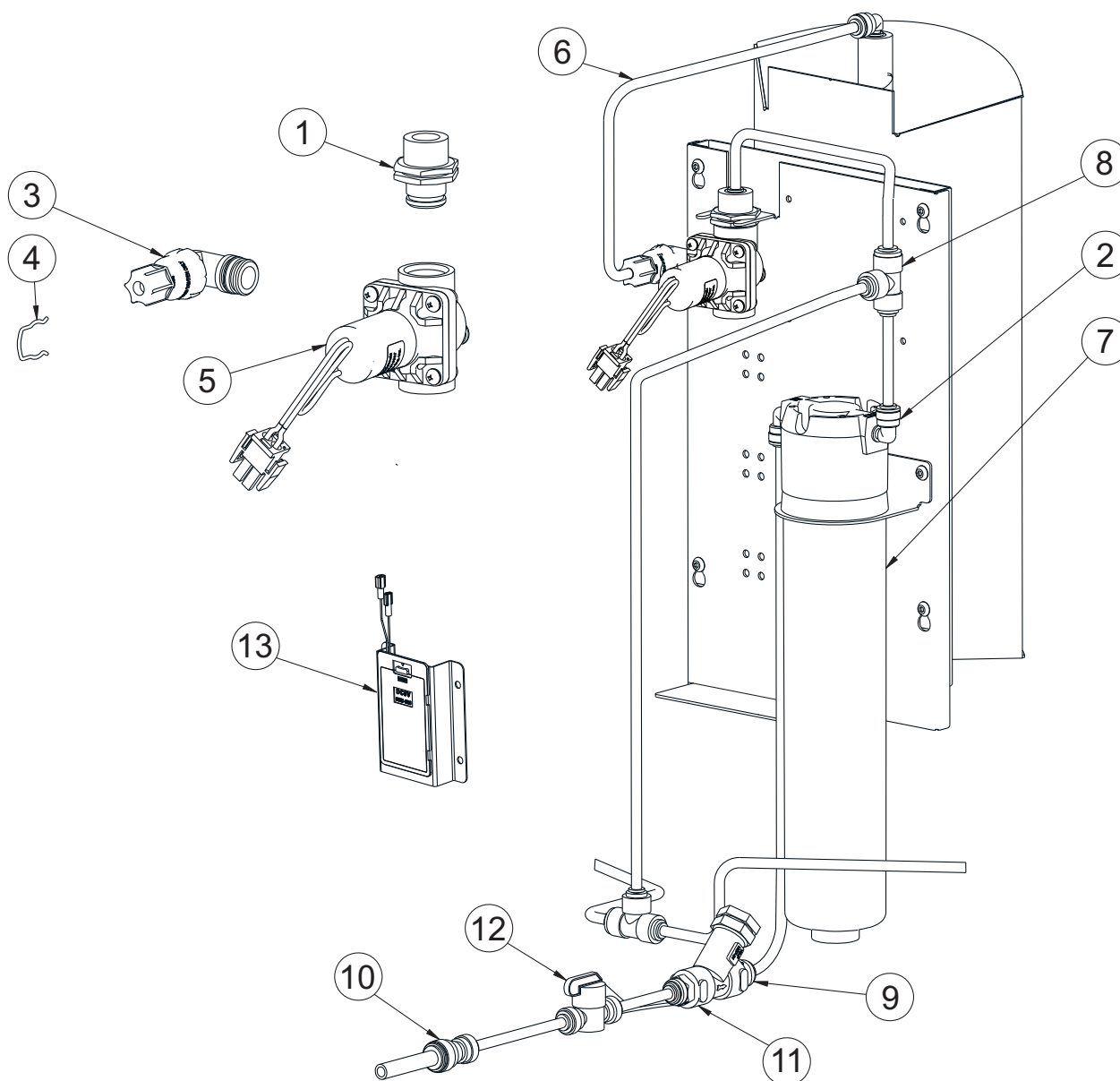
BOTTLE FILLER VALVE

ASSEMBLY:

Optional Sensor Operation,
Repair Parts

For models with optional
-SO Sensor Operation.

ITEM	PART NUMBER	DESCRIPTION
1	2800-108-001	1/4" JACO INLET ADAPTER ASSEMBLY
2	1895-709-000	1/4" OD x 1/4" OD STEM PUSH-IN ELBOW
3	2570-051-001	1/4" OD PLASTIC ELBOW ASSEMBLY
4	0326-100-000	RETAINING CLIP, AIR-CONTROL VALVE
5	2570-130-001	9VDC SOLENOID VALVE ASSEMBLY
6	2169-000-000	1/4" OD LLDPE TUBING (BLUE)
7	7012-313-000	WF1 FILTER 1500 GALLON CARTRIDGE
8	1895-710-000	1/4" PUSH-IN UNION TEE
9	7000-021-000	1/4" NPT "Y" STRAINER
10	1895-123-000	1/4" x 3/8" OD TUBE UNION PUSH-IN CON
11	1895-125-000	1/4" OD x 1/4" NPT PUSH-IN FITTING
12	7000-420-000	1/4" OD PUSH-IN 1/4" TURN SHUT-OFF VALVE
13	0710-357-001	AA 6-PACK BATTERY HOLDER ASSY



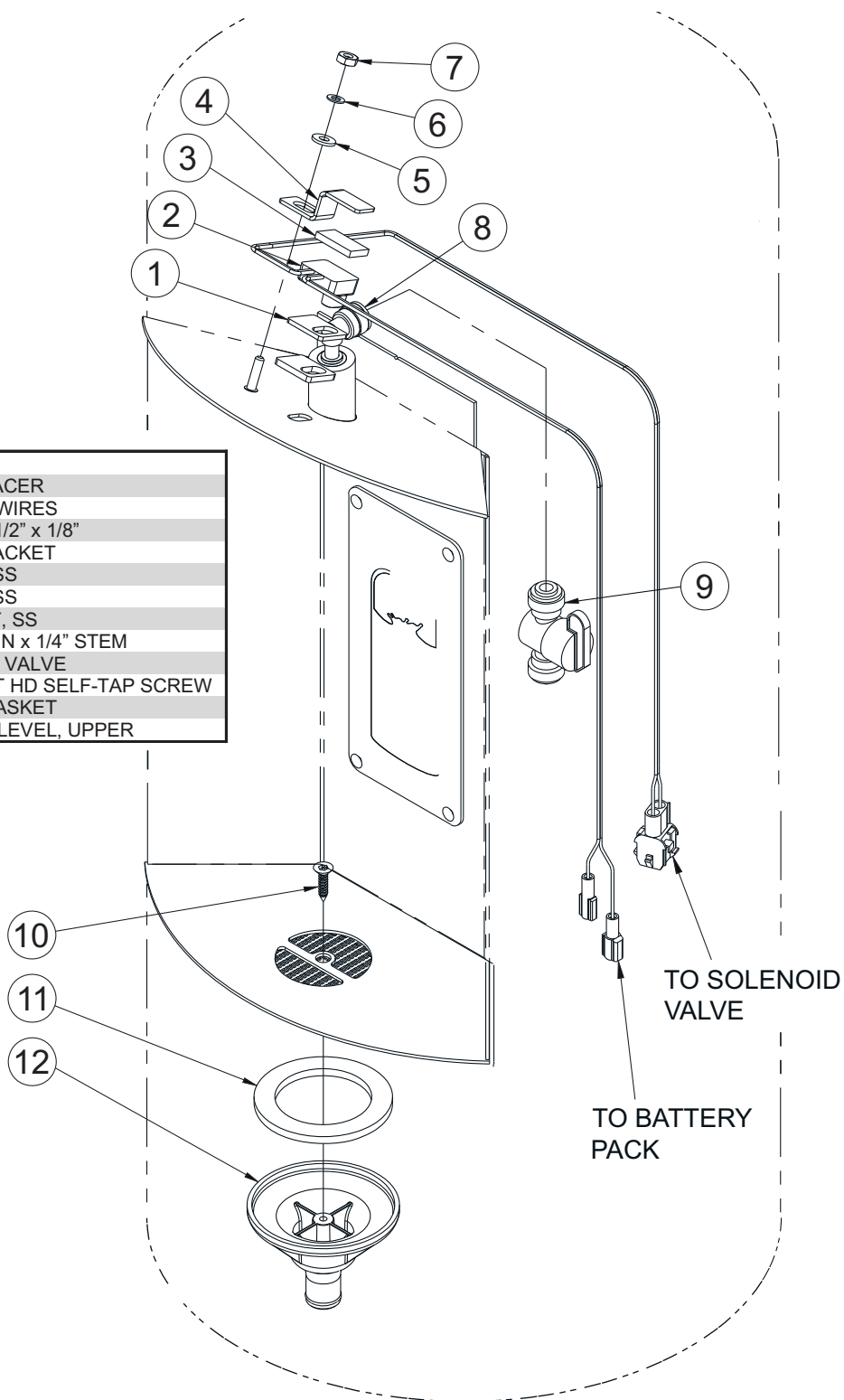
BOTTLE FILLER

ASSEMBLY:

Optional Sensor Operation,
Repair Parts

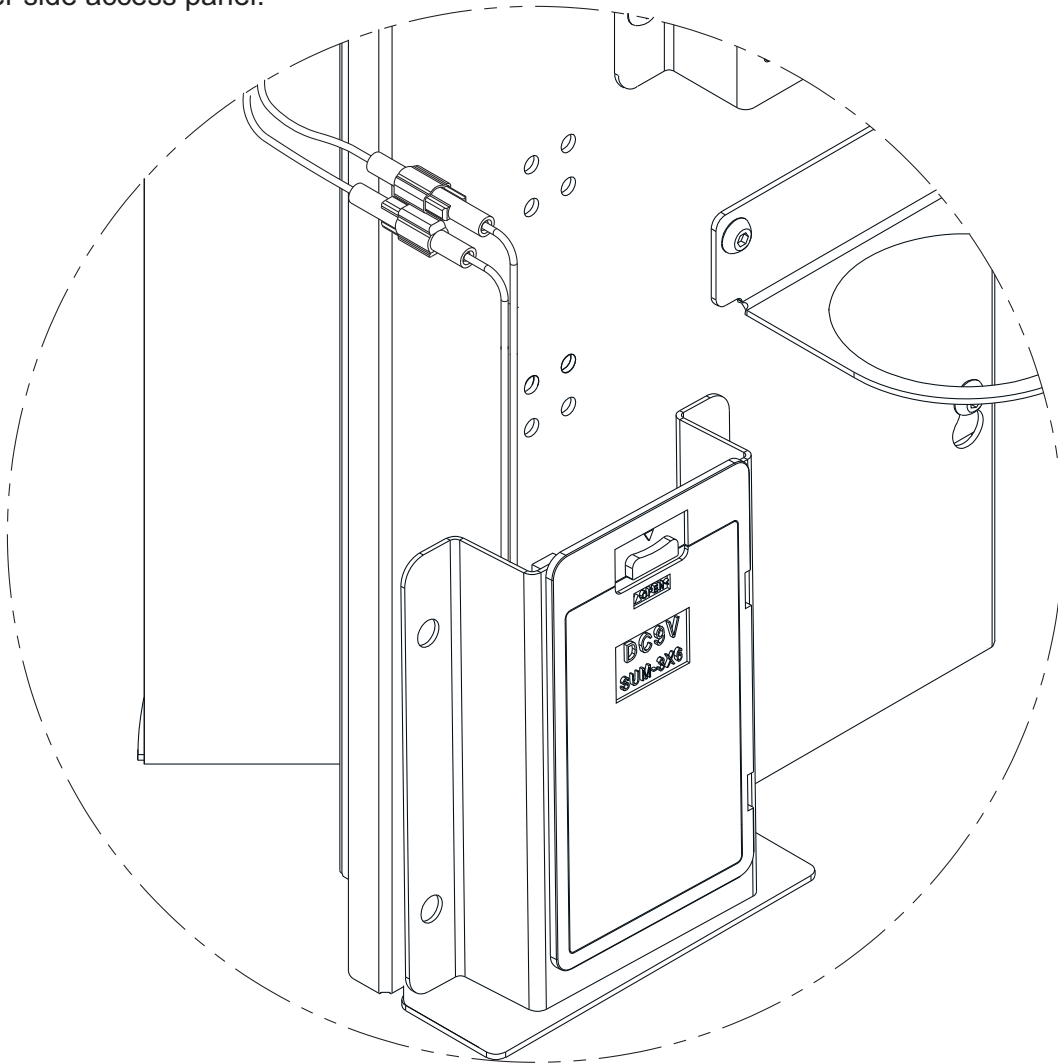
For models with optional
-SO Sensor Operation.

ITEM	PART NUMBER	DESCRIPTION
1	7013-013-199	NANO SENSOR SPACER
2	7013-057-002	NANO SENSOR, w/ WIRES
3	7013-019-199	FOAM TAPE, 7/8" x 1/2" x 1/8"
4	7013-010-199	NANO SENSOR BRACKET
5	0331-023-000	#8 FLAT WASHER, SS
6	6527-108-000	#8 LOCKWASHER, SS
7	0302-003-000	#8-32 UNF HEX NUT, SS
8	1895-709-000	ELBOW, 1/4" PUSH-IN x 1/4" STEM
9	7000-420-000	1/4 TURN SHUTOFF VALVE
10	0124-033-000	#8 x 3/4" LONG FLAT HD SELF-TAP SCREW
11	7000-006-000	DRAIN ADAPTER GASKET
12	7003-182-000	ACCESS DRAIN, BI-LEVEL, UPPER



BATTERY REPLACEMENT

1. Loosen and remove bottle filler side access panel and remove battery pack from placed location. Do not disconnect the wires from the battery pack unless necessary.
2. Replace the six alkaline AA batteries while observing polarity.
3. Return the battery pack back to mounted location and test for proper operation. Then attach bottle filler side access panel.

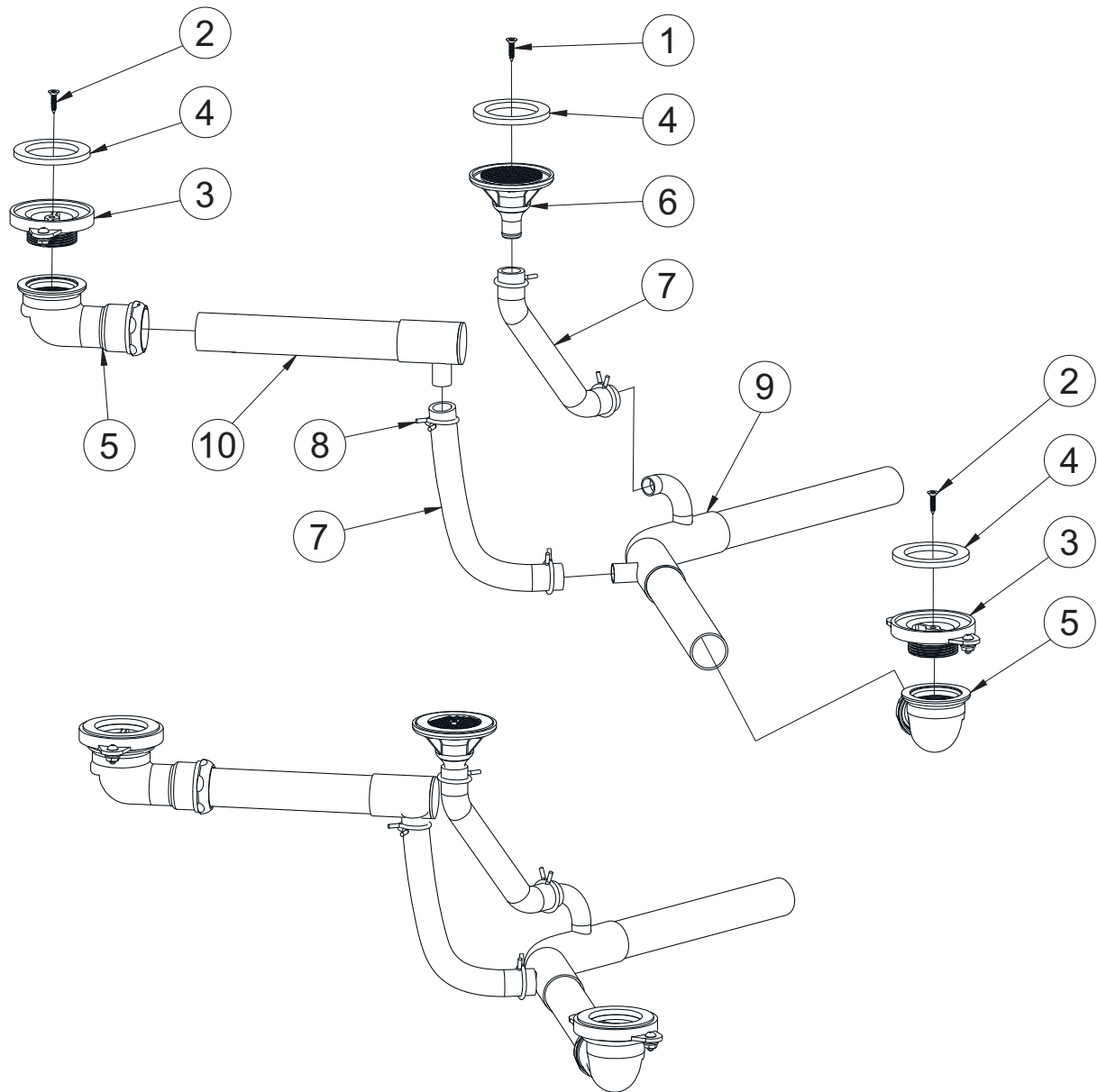


WASTE ASSEMBLY

(STANDARD):

Connections and Assembly, Repair Parts

ITEM	PART NUMBER	DESCRIPTION
1	0124-033-000	#8 x 3/4" HEX SELF TAPPING SCREW
2	0152-010-000	#10-32 x 1" HEX FLAT HEAD SCREW
3	7000-005-199	DRAIN ADAPTER
4	7000-006-000	DRAIN ADAPTER GASKET
5	7000-017-001	ELBOW, ORING x 1-1/4" COMPRESSION
6	7003-182-000	ACCESS DRAIN, BI-LEVEL, UPPER
7	7003-183-000	ANSI/AHAM CERTIFIED FLEX HOSE, 5/8 x 7/8
8	7003-184-000	7/8" SPRING HOSE CLAMP
9	JSMA4006-001	WASTE TUBING RH ASSY
10	JSMA4007-001	DF ARM WASTE SUB-ASSY



WASTE ASSEMBLY WITH OPTIONAL P-TRAP:

Connections and Assembly, Repair Parts

ITEM	PART NUMBER	DESCRIPTION
1	0124-033-000	#8 x 3/4" HEX SELF TAPPING SCREW
2	0152-010-000	#10-32 x 1" HEX FLAT HEAD SCREW
3	7000-005-199	DRAIN ADAPTER
4	7000-006-000	DRAIN ADAPTER GASKET
5	7000-017-001	ELBOW, ORING x 1-1/4" COMPRESSION
6	7003-182-000	ACCESS DRAIN, BI-LEVEL, UPPER
7	7003-183-000	ANSI/AHAM CERTIFIED FLEX HOSE, 5/8 x 7/8
8	7003-184-000	7/8" SPRING HOSE CLAMP
9	MURGRE47-001	LH/RH WASTE S/S TUBING ASSY, GYE20
10	MURGRE49-001	RH WASTE TUBING ASSY, GYE20-PT

