

# WALL MOUNTED BOTTLE FILLER WITH ANGLED BI-LEVEL DRINKING FOUNTAINS

## STANDARD FEATURES

- Bottle Filler and Drinking Fountain Adult ADA Compliant (when properly installed)
- Optionally Available with "Hands Free" Controls
- Extra Height Bottle Filler with Laminar Flow Spout
- Resistant to Sunlight, Heat, Moisture and wear
- 18 Gauge, Type 304 Stn Stl Drinking Fountain Bowls
- 12 Gauge, Heavy Duty Stainless Steel Construction with Corrosion and Scratch Resistant Finish
- Polished Stainless Steel, Anti-Rotation, Non-Squirt Bubbler
- Heavy Duty, Stainless Steel Access Covers
- 1/4" Thick Stainless Steel Mounting Plate
- Lead and Cyst Water Filter (N/A with -FRA option)
- 100-Mesh Inlet Strainer

## SUGGESTED SPECIFICATIONS

Wall Mounted Round Bi-Level Bottle Filler with Drinking Fountain construction shall be 12 gauge, all stainless steel with 18 gauge type 304 stainless steel fountain bowls. Provide 1/4" thick stainless steel mounting plate to securely anchor unit to wall. Access Panels shall be secured with vandal-resistant stainless steel screws. Drinking Fountain shall be activated by a front mounted self-closing Pushbutton with Cartridge Valve Assembly, using less than 5 pounds of force to activate with an adjustable stream regulator controlling the water flow. Bubblers shall be stainless steel with non-squirt feature and operate on water pressure range of 20-105 PSIG. Extra height Bottle Filler shall be activated a Pneumatic Pushbutton using less than 5 lbs of force to activate and provide 1.0 GPM from Laminar Flow Spout. **P-Trap shall be installer provided behind wall** (Optional -PT P-Trap with access below fixture is available). Unit shall contain a 100-mesh Inlet Strainer, with lead and cyst Filter. Fountain shall comply with ANSI A117.1, Public Law 111-380 (NO-LEAD), CHSC 116875 and NSF/ANSI 61, Section 9. Fixture to meet ADA and ADA Reach requirements when mounted appropriately.

Complies with the following standards:



NSF/ANSI 61



Federal Public Law 111-380 (No Lead)



"FOR INDOOR AND OUTDOOR USE"

### MODEL:

(Must Specify)

Satin Stainless Finish (Shown)

Green Powder-Coated

Red Powder-Coated

Blue Powder-Coated

Custom color finishes available upon request

### ADA DRINKING FOUNTAIN ORIENTATION

(Must Specify)

- L ADA Drinking Fountain Left Side (Opposite)
- R ADA Drinking Fountain Right Side (Shown)

### OPTIONAL ACCESSORIES

(additional costs may be incurred)

- FRA3 Freeze Resistant Valve, Three Valves<sup>1</sup> (Less Filter & Sensor)
- LOGO Customer specified logo
- PT 1-1/4" OD P-Trap (Access Below Fixture)
- SOC Concealed Sensor Operated Drinking Fountain (N/A with -FRA2<sup>1</sup>) Battery Operated Standard, Plug-in Power Optional
- SO Sensor Operated Bottle Filler (N/A with -FRA2<sup>1</sup>) Battery Operated Standard, Plug-in Power Optional
- 316 Type 316 Stainless Steel Construction

Option Notes:

<sup>1</sup>See separate option sheet



Member of  
U.S. Green  
Building  
Council



Recyclable  
Product

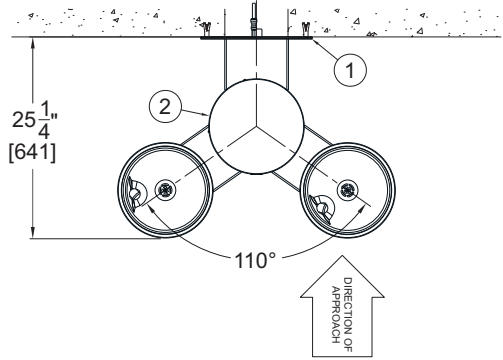


Water  
Conserving  
Product

⚠ WARNING: Cancer and Reproductive Harm - www.P65Warnings.ca.gov

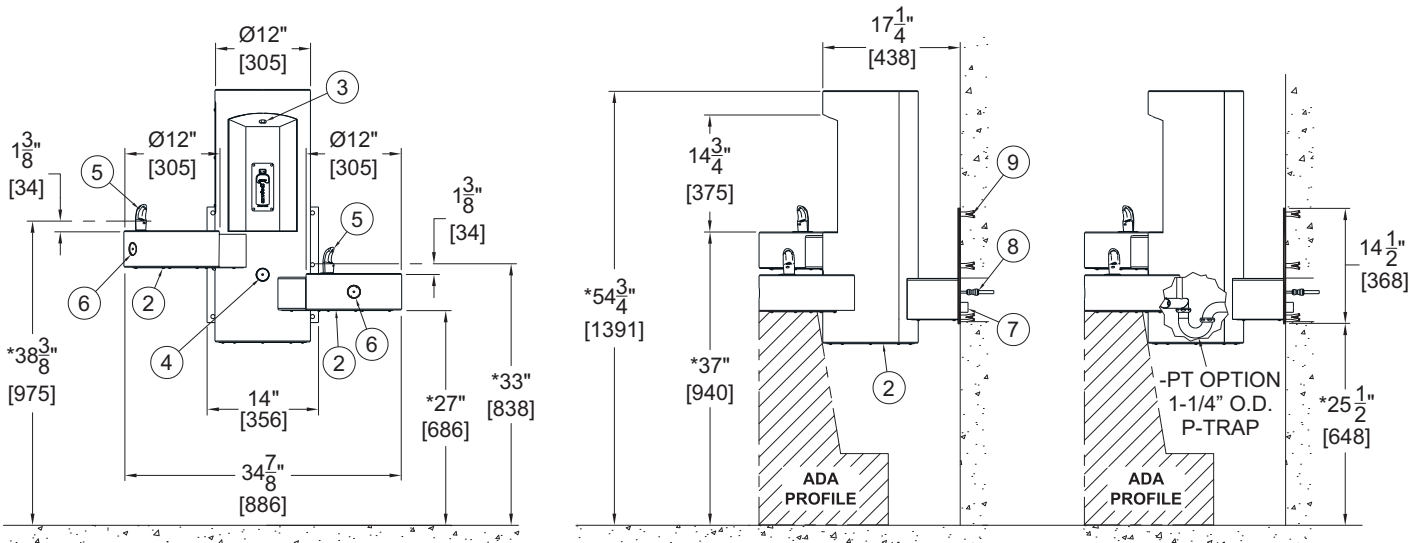
\* Valve specifications:  
Minimum/Maximum  
Pressure 30 to 100 psi.

## WALL MOUNTED BOTTLE FILLER WITH DRINKING FOUNTAINS



**NOTES:**

1. 1/4" THICK SS MOUNTING PLATE
2. REMOVABLE ACCESS PANELS
3. BOTTLE FILLER SPOUT
4. BOTTLE FILLER PUSHBUTTON WITH CARTRIDGE VALVE
5. DRINKING BUBBLER
6. DRINKING FOUNTAIN PUSHBUTTON WITH CARTRIDGE VALVE
7. 1-1/4" O.D. WASTE OUTLET FOR P-TRAP BEHIND WALL (STANDARD) P-TRAP PROVIDED BY OTHERS
8. 3/8" O.D. SUPPLY CONNECTION
9. INSTALLER PROVIDED WALL ANCHORS AND ANCHORING HARDWARE



**GYE24-R SHOWN**

**GENERAL NOTES:**

1. ALL DIMENSIONS ARE IN INCHES [MM].
- \*2. DIMENSIONS SHOWN ARE FOR RECOMMENDED ADULT HEIGHT. ADJUST VERTICAL DIMENSIONS AS NECESSARY TO COMPLY WITH FEDERAL, STATE, & LOCAL CODES.
3. STOP VALVE NOT PROVIDED.

**IMPORTANT:** Refer to installation instructions for complete rough-in and technical data.  
**NOTE:** Some options may change standard roughs.