

BASE ROUGH-IN VIEW

INSTALLATION INSTRUCTIONS:

- A- PROVIDE 30" SQUARE MINIMUM x 6" DEEP MINIMUM CONCRETE SLAB BY OTHERS TO SECURELY ANCHOR FIXTURE. INSTALL THE FOUR PROVIDED CONCRETE ANCHORS (1) AT DIMENSIONS SHOWN TO MATCH HOLES (2) IN FIXTURE BASE.
- B- ROUGH-IN WASTE OUTLET (3) CENTERED AS SHOWN FOR 1-1/4" OUTER DIAMETER PLAIN END TAILPIECE (4).
- C- ROUGH-IN WATER SUPPLY (5) WITHIN 5" DIAMETER BOTTOM OPENING FOR CONNECTION TO VALVE USING THE SUPPLIED 6" LONG FLEX HOSE WITH 1/2" NPS FEMALE END WHICH WILL ACCOMODATE 1/2" NPT MALE ADAPTER.
- D- CAREFULLY REMOVE FIXTURE (6) AND COMPONENTS FROM THE PACKAGING PREVENTING SCRATCHING AND DAMAGE.
- E- REMOVE THE BACK ACCESS PANEL (7). ENSURE PUSHBUTTON, WASTE TAILPIECE (4) AND BUBBLER (8) ARE SECURE AND CHECK ALL TUBING CONNECTIONS TO MAKE SURE THEY DID NOT COME LOOSE IN SHIPMENT.

- F- SET FIXTURE IN PLACE ALIGNING BASE HOLES (2) WITH THE INSTALLED ANCHORS (1) AND SECURE WITH THE 1/2" UNC HARDWARE (9) PROVIDED.
- G- MAKE-UP 1-1/4" O.D. WASTE CONNECTION TO TAILPIECE (4).
- H- INSTALL AIR-CONTROL VALVE WITHIN PEDESTAL USING THE HARDWARE PROVIDED. CONNECT 1/4" O.D. TUBING COMING FROM 1/4 TURN VALVE AND 1/8" O.D. TUBING FROM PUSH-BUTTON TO VALVE. **NOTE:** ONLY HANDTIGHTEN FERRULE NUTS.
- I- FLUSH WATER SUPPLY (5) BY OTHERS OF ALL DEBRIS PRIOR TO CONNECTING TO VALVE.
- J- CONNECT WATER SUPPLY (5) BY OTHERS TO VALVE USING SUPPLIED 1/2" NPS FLEX HOSE.
- K- TEST OPERATION OF BUBBLER BY DEPRESSING PUSHBUTTON. ADJUST FLOW RATE AS REQUIRED USING IN-LINE 1/4 TURN VALVE. CHECK ALL CONNECTIONS AND WASTE PIPING FOR LEAKS. CORRECT IF PRESENT.
- L- RE-INSTALL BACK ACCESS PANEL (7).

ROUND OUTDOOR STONE PEDESTAL DRINKING FOUNTAIN

MANUFACTURE DATE

JANUARY 2006

TO PRESENT

DATE ISSUED

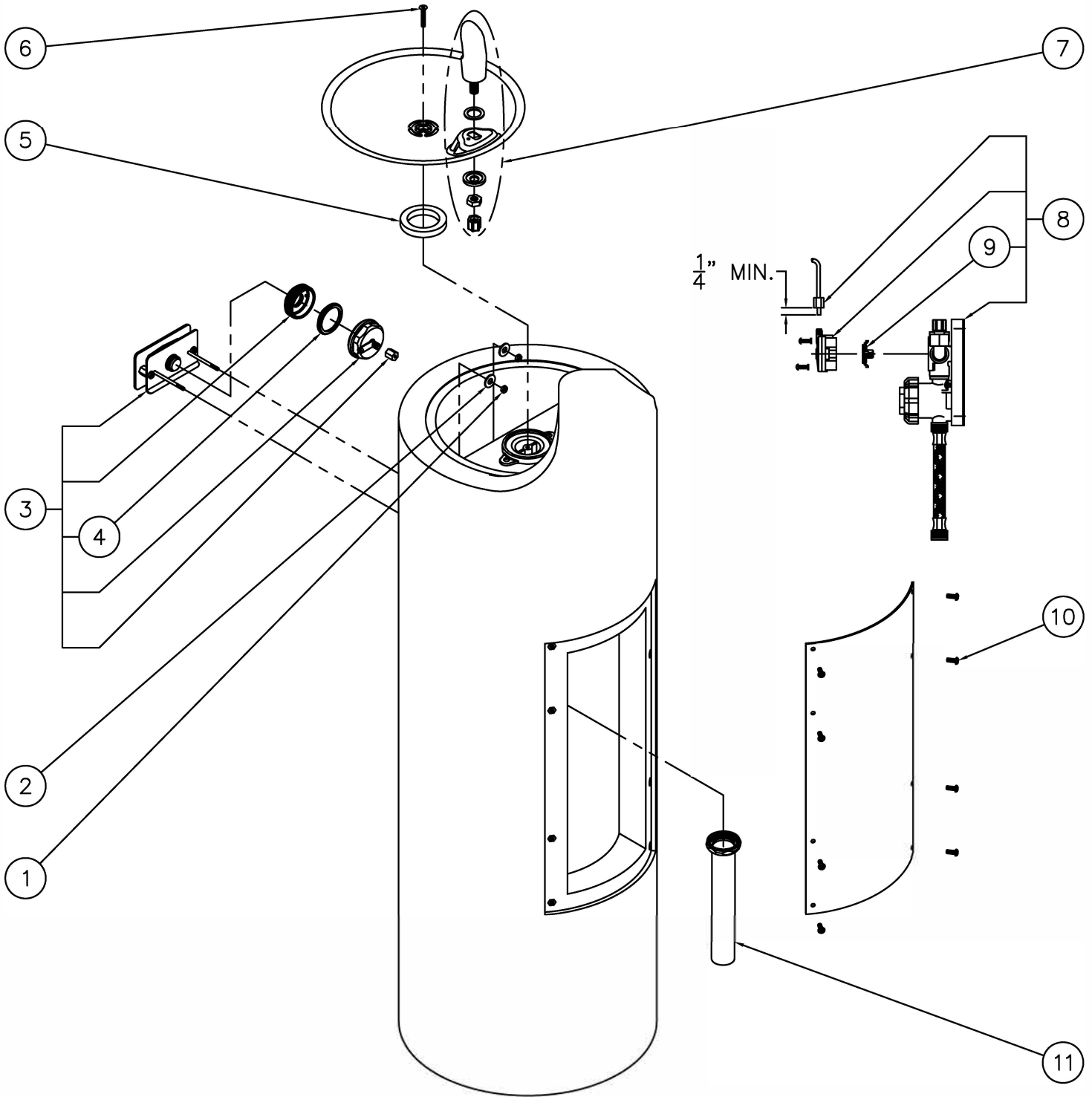
09/27/05

DATE REVISED

03/30/16

DRAWING NUMBER

9938-200-001

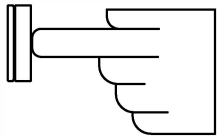



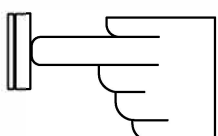

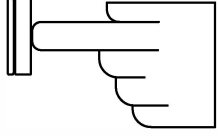



1	0302-003-000	8/32" UNF STAINLESS STEEL HEX NUT	7	7000-012-001	STAINLESS STEEL BUBBLER
2	0331-020-000	STAINLESS STEEL WASHER	8	2590-612-001	S/T NON-METERING AIR-CONTROL VALVE
3	7031-160-001	STONE FOUNTAIN PUSHBUTTON ASSEMBLY	9	2563-010-001	WATER DIAPHRAGM ASSEMBLY
4	2566-001-000	PUSHBUTTON DIAPHRAGM	10	0112-002-000	CENTER REJECT ALLEN BUTTON HD SCREW
5	7000-006-000	FLAT DRAIN ADAPTER GASKET	11	7000-019-001	1-1/4" OUTER DIAMETER TAILPIECE
6	0152-040-000	CENTER REJECT ALLEN FLAT HEAD SCREW			
ITEM	PART NUMBER	DESCRIPTION	ITEM	PART NUMBER	DESCRIPTION
		TITLE	ROUND OUTDOOR STONE PEDESTAL DRINKING FOUNTAIN		
		MANUFACTURE DATE	DATE ISSUED		DRAWING NUMBER
		JANUARY 2006	11/16/05		
		TO PRESENT	DATE REVISED		9938-200-500
			03/30/16		

PUSH PAD / PUSH BUTTON FRU FREEZE RESISTANT DRINKING FOUNTAINS
NON-METERING AIR-CONTROLLED VALVE - (DIRECT ACTING)

CONDITION:

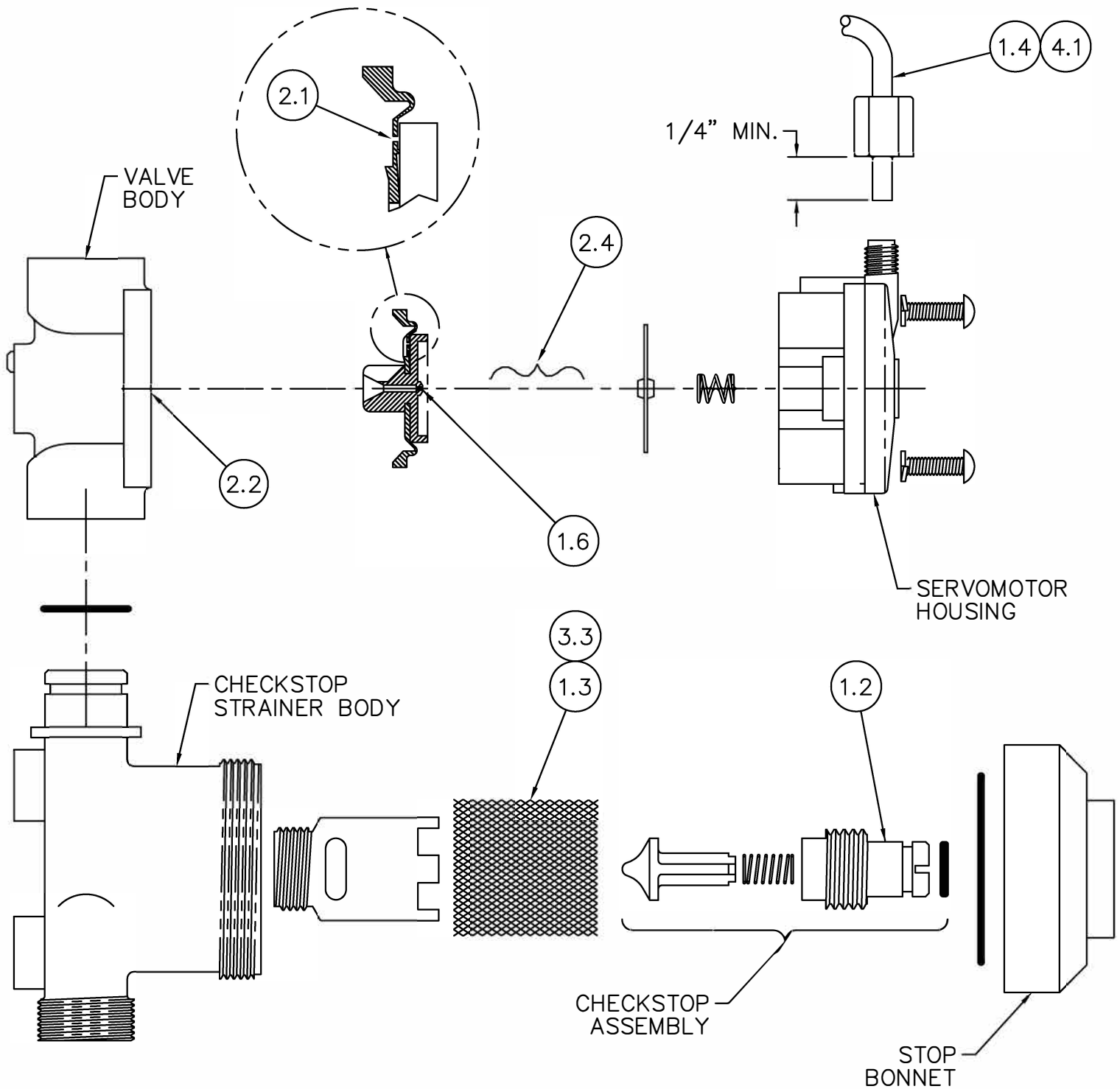
SOLUTION:

<p>NO WATER FLOW:</p>  	<ol style="list-style-type: none"> 1.1 Check water main supply – open. 1.2 Inspect checkstops – open. 1.3 Inspect checkstop strainer for debris – clean. 1.4 Check 1/8” O.D. tubing and fittings for leaks. 1.5 Check pushbutton air diaphragm for holes. 1.6 Check servomotor diaphragm center hole for blockage.
<p>WATER DRIPS / WILL NOT SHUT OFF:</p>  	<ol style="list-style-type: none"> 2.1 Check servomotor diaphragm offset hole for debris. 2.2 Check servomotor seat for build-up or damage. 2.3 Check servomotor seat o-ring for damage. 2.4 Check servomotor plate and diaphragm for obstruction.
<p>REDUCED WATER FLOW:</p>  	<ol style="list-style-type: none"> 3.1 Check water main supply for 20 psig minimum flow pressure. 3.2 Check valve riser tubing for crimping. 3.3 Inspect checkstop strainer for debris – clean. 3.4 Check valve flow control for blockage – clean. 3.5 Inspect bubbler for debris – clean.
<p>PREMATURE WATER SHUTOFF:</p>  	<ol style="list-style-type: none"> 4.1 Check 1/8” O.D. tubing and fittings for leaks. 4.2 Check pushbutton air diaphragm for holes.

Refer to Air-Controlled Valve Maintenance Detail on drawing # 9940-203-001 for -FRA_ Above Ground units and on drawing # 9940-204-001 for Stone & -FRU_ Below Ground units to locate solutions above.

	<p>TITLE FRU FREEZE RESISTANT FOUNTAIN VALVE MAINTENANCE INSTRUCTIONS</p>		
	<p>MANUFACTURE DATE JANUARY 2006 TO PRESENT</p>	<p>DATE ISSUED 10/20/05</p>	<p>DRAWING NUMBER 9940-202-001</p>
		<p>DATE REVISED 03/15/16</p>	

PUSH PAD / PUSH BUTTON BELOW GROUND FREEZE RESISTANT DRINKING FOUNTAINS
NON-METERING AIR-CONTROLLED VALVE - (DIRECT ACTING)



CHECKSTOP STRAINER - SERVOMOTOR DETAIL

Refer to drawing #9940-202-001 for Valve Maintenance Instructions numbered solutions detailed above.

3/4	TITLE		
	NON-METERING FRU AIR-CONTROLLED VALVE MAINTENANCE INSTRUCTIONS		
	MANUFACTURE DATE		DATE ISSUED
	JANUARY 2006		12/07/05
		DATE REVISED	DRAWING NUMBER
TO PRESENT		03/15/16	
			9940-204-001