

# Recessed Outdoor Bottle Filler

## STANDARD FEATURES

- 115v Plug-in transformer
- Pushbutton and hands free sensor operated bottle filler
- 100 mesh inlet strainer
- Laminar flow water supply
- 1.0 GPM fill rate
- Lead-free
- Lead and cyst filter for bottle filler
- Meets ADA forward and side reach requirements
- Vandal-resistant design
- Gasketed door for weather resistance
- Resistant to sunlight, heat, moisture and wear

## SUGGESTED SPECIFICATIONS

Model M-OBR4 is a Recessed outdoor bottle filler. Housing has a slim and trim look that blends into your environment. Unit also has a strong vandal-resistant design for years of trouble-free service. Bottle filler shall be activated by a 9 volt sensor or a pushbutton as standard. Fixture has a self-closing pushbutton, needing less than 5 pounds of force which shall activate the internally mounted valve. When installed properly, the bottle filler complies with ADA forward and side reach requirements. Bottle filler is fabricated of type 304 stainless steel. Unit complies with ANSI A117.1, Public Law 111-380 (NO-LEAD), CHSC 116875 and NSF/ANSI 61, Section 9.



## MODEL:

(Must Specify)

Satin stainless finish (Shown)  
Green powder-coated  
Red powder-coated  
Blue powder-coated  
Custom color finishes available upon request

## OPTIONS

(additional costs may be incurred)

- BAT Battery operated (N/A with bottle counter)
- BCD Bottle counter display
- FRA1 Freeze-resistant valve, single valve (Less filter and sensor)
- LOGO Customer specified logo
- MO Bottle filler operated by pushbutton only (Standard with freeze-resistant valve)
- A9100080-A 8 GPH remote water chiller (Locate on interior wall, not exposed to weather)

Complies with the following standards:



Member of  
U.S. Green  
Building  
Council

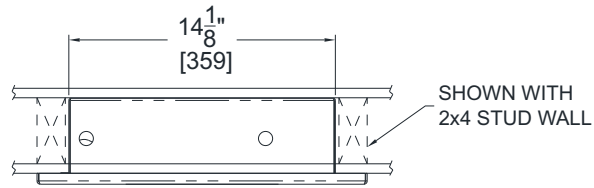


Recyclable  
Product

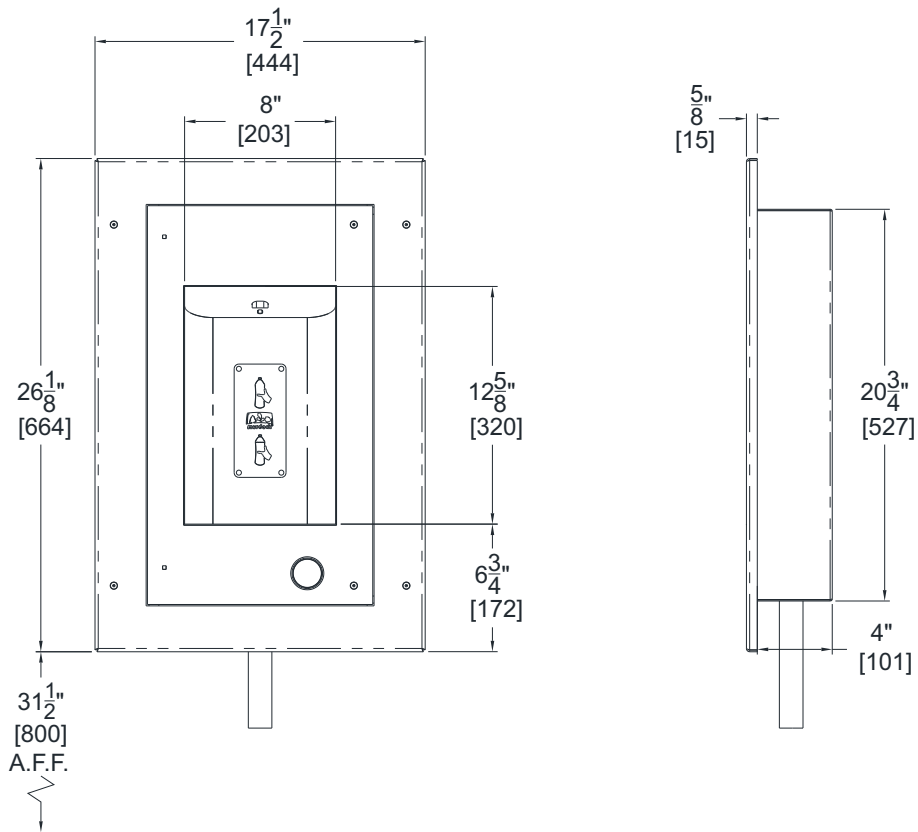


Water  
Conserving  
Product

WARNING: Cancer and Reproductive Harm - [www.P65Warnings.ca.gov](http://www.P65Warnings.ca.gov)



## RECESSED OUTDOOR BOTTLE FILLER



### GENERAL NOTES:

1. ALL DIMENSIONS ARE IN INCHES [MM]
- \*2. DIMENSIONS SHOWN ARE FOR RECOMMENDED ADULT HEIGHT. ADJUST VERTICAL DIMENSIONS NECESSARY TO COMPLY WITH FEDERAL, STATE & LOCAL CODES.
3. STOP VALVE NOT PROVIDED