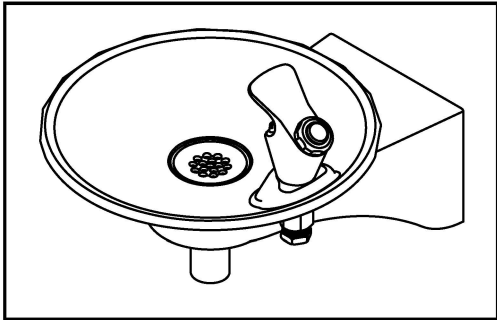
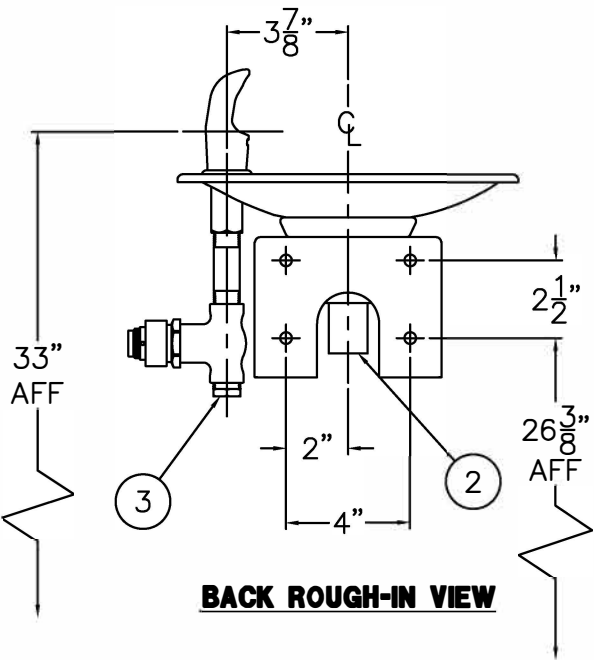
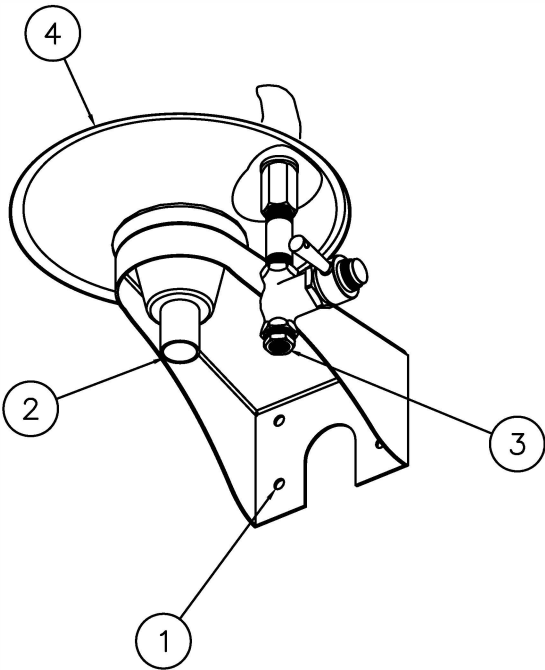
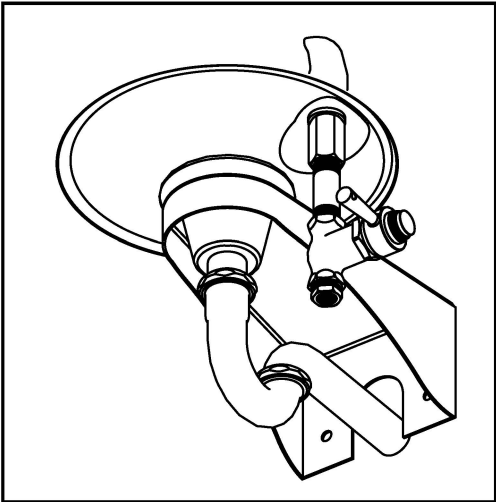


PUSHBUTTON BUBBLER



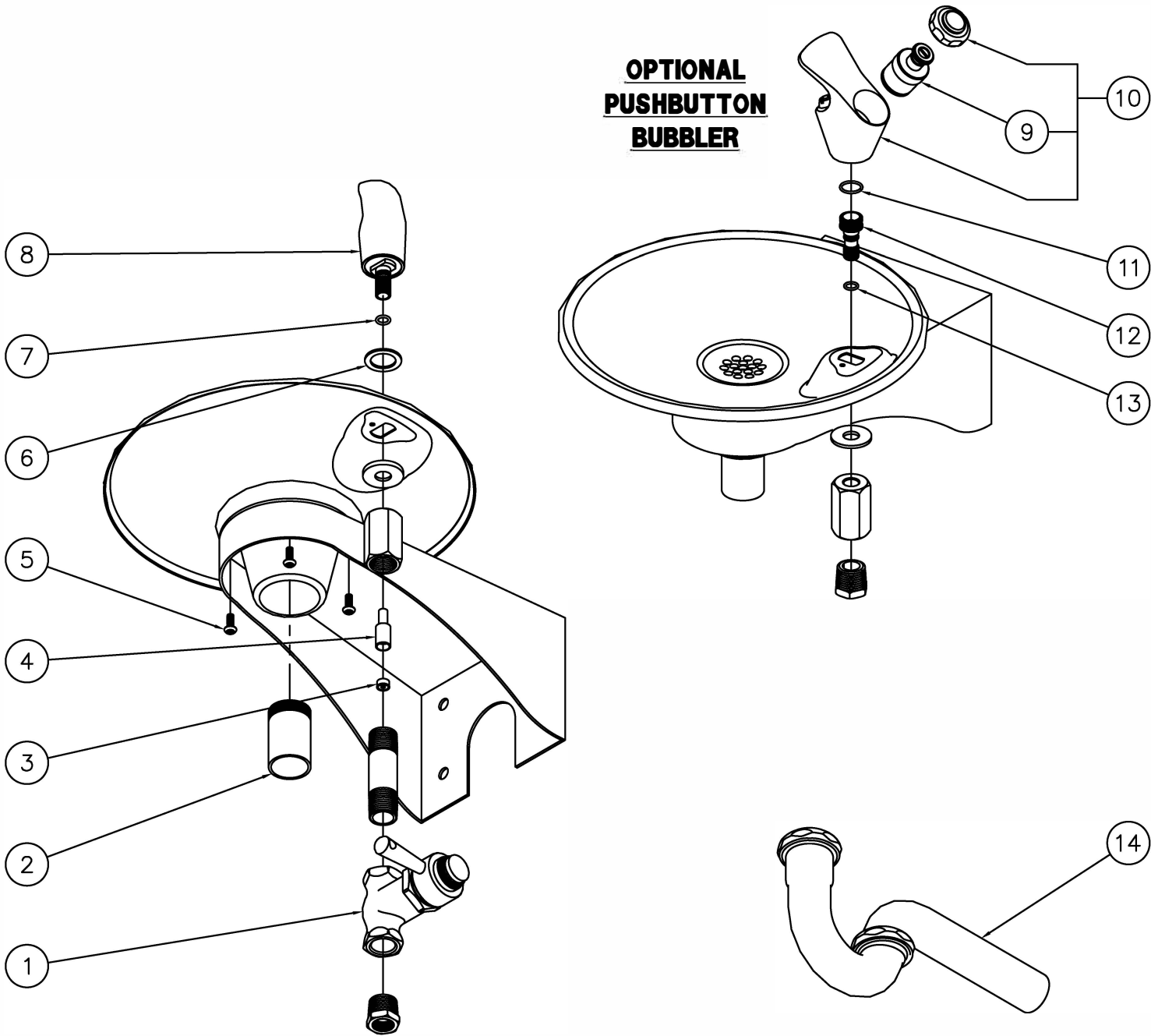
OPTIONAL -PT1 1-1/4" O.D. P-TRAP



INSTALLATION INSTRUCTIONS:

- A- STRUCTURALLY REINFORCE THE WALL BEHIND THE FOUR 3/8" DIAMETER MOUNTING HOLES ① AT THE DIMENSIONS SHOWN AND INSTALL WALL ANCHORS BY OTHERS.
- B- ROUGH-IN WASTE OUTLET FOR THE 1-1/4" OUTER DIAMETER PLAIN END TAILPIECE ②.
- C- ROUGH-IN WATER SUPPLY ③ AT DIMENSION SHOWN FOR 3/8" NPT FEMALE LEVER VALVE SUPPLY INLET. RECOMMENDED UNION AND SHUTOFF VALVE TO BE SUPPLIED BY OTHERS.
- D- CAREFULLY REMOVE FIXTURE ④ AND COMPONENTS FROM THE PACKAGING PREVENTING SCRATCHING AND DAMAGE.
- E- SECURELY ANCHOR FIXTURE ④ TO WALL THRU MOUNTING HOLES ① WITH ANCHORING HARDWARE BY OTHERS.
- G- MAKE-UP 1-1/4" O.D. WASTE CONNECTION TO TAILPIECE ②.
- H- FLUSH WATER SUPPLY ③ BY OTHERS OF ALL DEBRIS PRIOR TO CONNECTING TO FIXTURE.
- I- CONNECT THE WATER SUPPLY ③ BY OTHERS TO 3/8" NPT FEMALE INLET. STOP ON THE SUPPLY IS RECOMMENDED.

5/22	ROUND BOWL WALL MOUNTED DRINKING FOUNTAIN		
	JANUARY 2006 TO PRESENT	10-21-08	DRAWING NUMBER 9938-250-0M1
		DATE REVISED 05/20/16	



OPTIONAL -PT1 1-1/ 4" O.D. P-TRAP

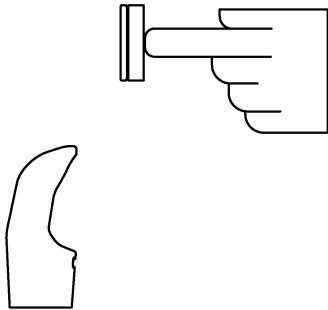
1	7018-010-199	SELF CLOSING LEVER VALVE	8	7018-112-199	SOLID STAINLESS STEEL BUBBLER
2	4952-002-000	1-1/4" OUTER DIAMETER TAILPIECE	9	7000-060-000	VALVE CARTRIDGE
3	0471-010-000	FLOW REGULATOR	10	2990-013-002	DECK MOUNTED SST PUSHBUTTON BUBBLER
4	7018-008-199	FLOW REGULATOR ADAPTER	11	0404-015-000	O-RING
5	0112-056-000	CENTER REJECT ALLEN BUTTON HEAD SCREW	12	7018-011-199	BUBBLER ADAPTER
6	7000-007-000	BUBBLER GASKET	13	0404-011-000	O-RING
7	0404-011-000	O-RING	14	4953-002-000	1-1/4" x 1-1/4" OUTER DIAMETER P-TRAP
ITEM	PART NUMBER	DESCRIPTION	ITEM	PART NUMBER	DESCRIPTION
		TITLE ROUND BOWL WALL MOUNTED DRINKING FOUNTAIN			
		MANUFACTURE DATE JANUARY 2006 TO PRESENT		DATE ISSUED 10/21/08 DATE REVISED 05/20/16	
				DRAWING NUMBER 9938-250-5M0	

STANDARD PUSH PAD / PUSH BUTTON DRINKING FOUNTAIN

CONDITION:

SOLUTION:

NO WATER FLOW:



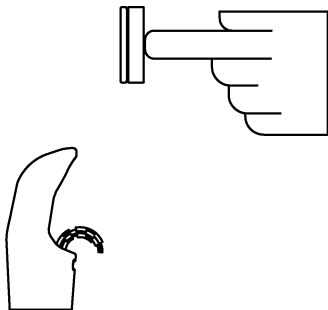
- 1.1 Check water main supply – open.
- 1.2 Inspect stop (by others) – open & no debris.
- 1.3 Inspect in–line strainer for debris – clean.
- 1.4 Replace valve cartridge.

WATER DRIPS / WILL NOT SHUT OFF:



- 2.1 For push pad activated drinking fountains only:
Open fixture and move valve bracket assembly further back from push pad.
- 2.2 Replace valve cartridge.

REDUCED WATER FLOW:



- 3.1 Adjust the valve flow rate. See appropriate fixture installation instructions.
- 3.2 Check water main supply for 20 psig minimum flow pressure.
- 3.3 Inspect stop (by others) – open & no debris.
- 3.4 Inspect in–line strainer for debris – clean.
- 3.5 Inspect bubbler for debris – clean.
- 3.6 Inspect all tubing for twists or kinks.
- 3.7 Replace valve cartridge.

<p>SUPER SECURITY of Industry, CA 91744</p>	<p>TITLE DRINKING FOUNTAIN VALVE MAINTENANCE INSTRUCTIONS</p>		
	<p>MANUFACTURE DATE</p> <p>JANUARY 2006</p> <p>TO PRESENT</p>	<p>DATE ISSUED</p> <p>10/21/08</p>	<p>DRAWING NUMBER</p> <p>9940-200-0M1</p>
		<p>DATE REVISED</p> <p>10/25/10</p>	