

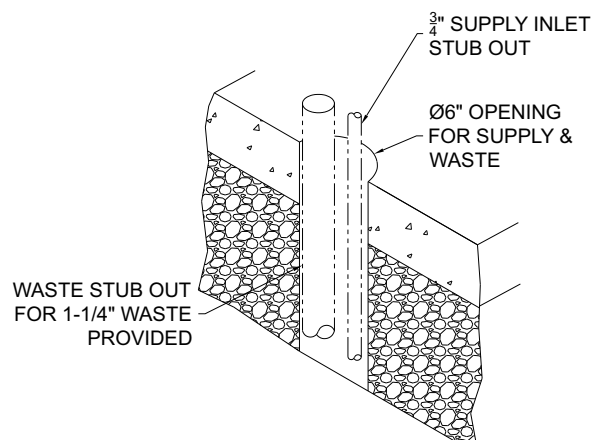
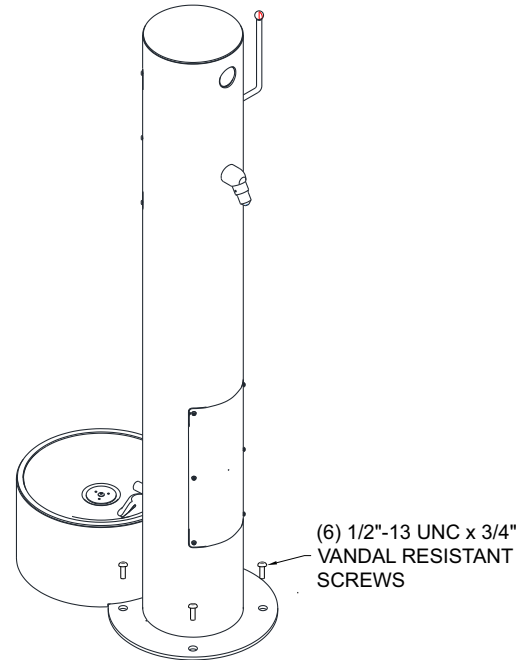
INSTALLATION INSTRUCTIONS FOR PET FOUNTAIN

Prior to installation:

- ❖ Read all instructions and refer to local codes.
- ❖ Supply line must be flushed of all foreign materials such as pipe dope, chips, etc.
- ❖ Pet Fountain piping and valve must be drained prior to being subjected to freezing temperatures.
- ❖ Maximum recommended working water pressure is 100 psi.
- ❖ Refer to diagram on page 2 for showerhead and pet fountain orientation before pouring concrete.
- ❖ Depending on code and design requirements, drain may be open, French or sanitary connection. For open drain, place a minimum of three cubic feet of large round rock under drain opening. Local soil conditions may require more rock for drainage.

1. Prepare trench for $\frac{3}{4}$ " water supply and waste line (if required).
2. At fountain location prepare hole to trench depth and large enough for a person to work.
3. Lay supply and waste into trench and above grade allowing extra line length to be trimmed during hook-up. Refill trench and hole, compacting back fill as required. Leave sufficient depth in hole to accommodate concrete.
4. Prepare the slab area surrounding fountain, spreading and compacting gravel as necessary. Prepare form approximately $\varnothing 6$ " to protect supply and waste stub outs, fix $\frac{1}{2}$ " L-bolt anchors by others in position arranging L-bolts per pattern indicated and pour concrete to grade. [If using optional -IAP In-Ground Anchor Plate, follow the installation steps provided with the plate and skip to step 7].
5. Leave enough thread for mounting base providing $\frac{1}{2}$ " engagement minimum. Ensure concrete top surface is flat and level.
6. If installing onto cured concrete use appropriate $\frac{1}{2}$ " concrete anchoring hardware by others following the manufacturer's installation recommendations.

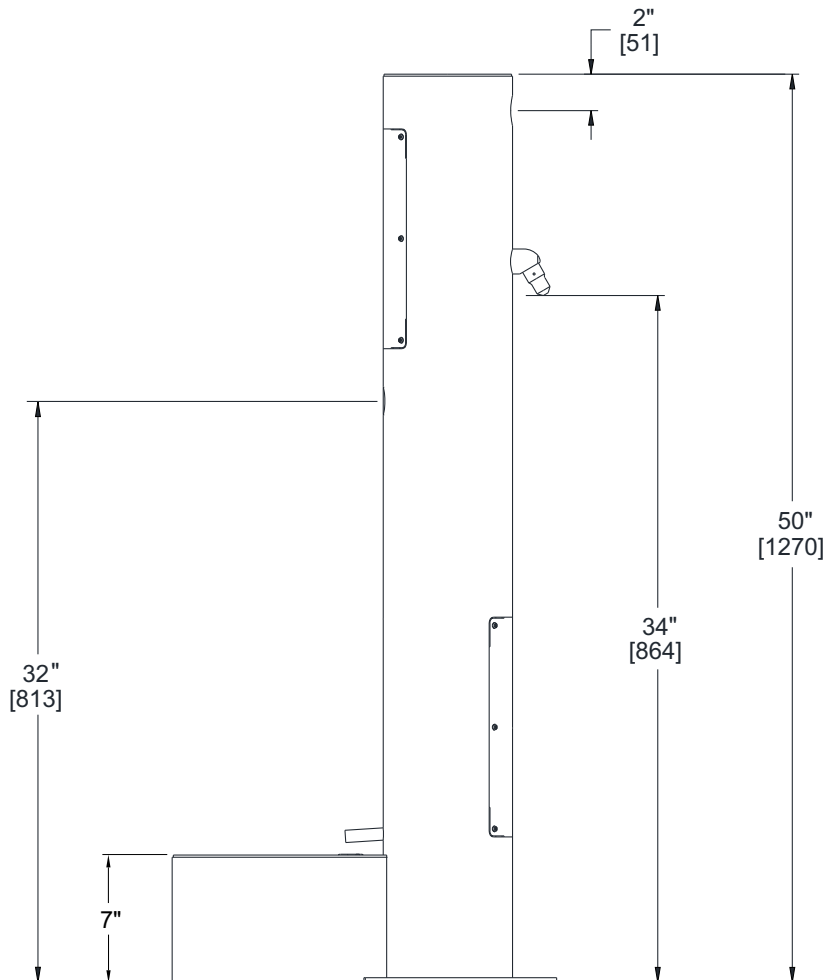
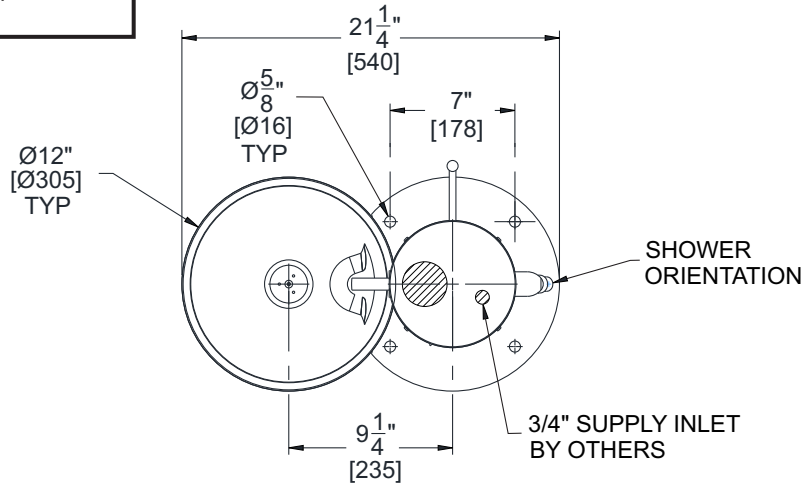
7. After concrete has cured, purge supply line thoroughly prior to making up supply and waste connections to fountain.
8. Align anchoring studs to pedestal mounting holes and lower into position. Remove access panels and make up flexible supply and waste connections through openings.
9. Secure pedestal to slab. To ensure plumb installation, lay a bubble level on fountain pedestal column and adjust using shims or washers until unit is level.

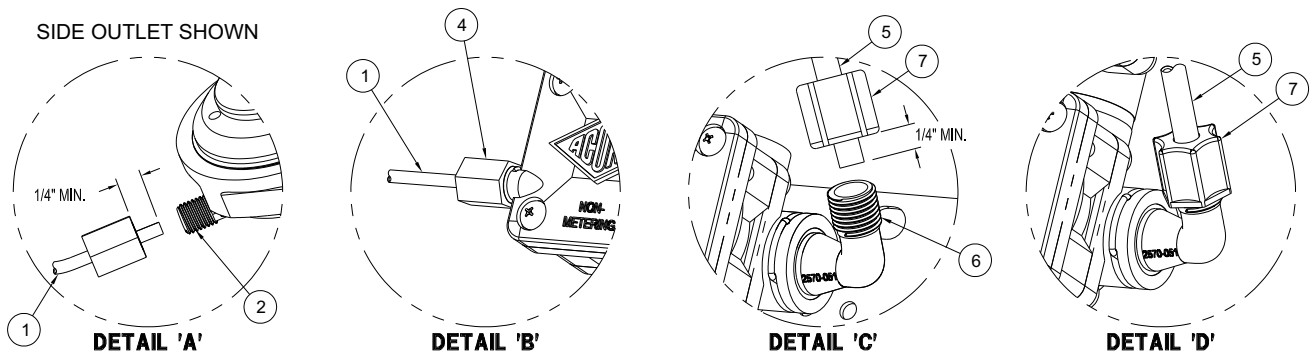


For freeze resistant option refer to -FRU manual #9938-340-0M1.

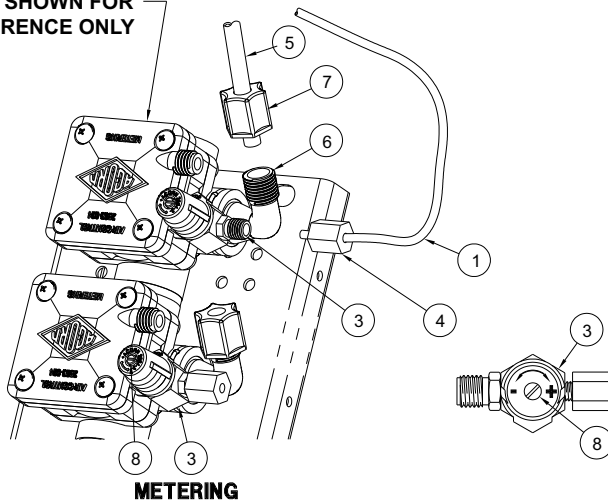
* A Pressure Reducing Valve is recommended for pressures exceeding 80 psi.

* Valve specifications:
Minimum/Maximum Pressure
30 to 100 psi.





AIR-CONTROL 03M-MA2
VALVE SHOWN FOR
REFERENCE ONLY



TIMING IS ADJUSTABLE FROM 5 TO 60 SECONDS AND IS ACCOMPLISHED BY ROTATING TIMING SCREW (8). TURNING THE TIMING SCREW CLOCKWISE INCREASES METERING TIME WHILE TURNING THE SCREW COUNTERCLOCKWISE DECREASES METERING TIME.

REFERENCE DRAWINGS	
REPAIR PARTS	DRAWING
VALVE BODY	9955-006-003
CHECKSTOP	9956-040-003
PUSHBUTTON/ESCUTCHEON	9957-300-001
METERING SERVOMOTOR	9955-000-003

NOTE:

1. ALL TUBING SHOULD BE CUT SQUARE AND BE FREE OF BURRS OR DEFORMITIES TO ENSURE A WATER TIGHT CONNECTION.
2. EXTEND TUBING AT LEAST 1/4" BEYOND FERRULE NUT AND INSERT TUBING INTO CONNECTION OPENING BEFORE TIGHTENING.
3. TUBING SHOULD BE FREE OF KINKS TO ENSURE PROPER OPERATION.
4. MAXIMUM RECOMMENDED WORKING WATER PRESSURE IS 100 PSI; TEMPERATURE IS 130° F; OUTLET TEMPERATURE IS RECOMMENDED AT A MAXIMUM OF 105° F.

WARNING:

PRIOR TO MAKING INSTALLATION, SUPPLY LINES MUST BE FLUSHED OF ALL FOREIGN MATERIAL SUCH AS PIPE DOPE, CHIPS, SOLDER, ETC. VALVE MUST BE DRAINED PRIOR TO BEING SUBJECTED TO FREEZING TEMPERATURES. MAXIMUM RECOMMENDED OUTLET WATER TEMPERATURE IS 105° F.

INSTALLATION INSTRUCTIONS:

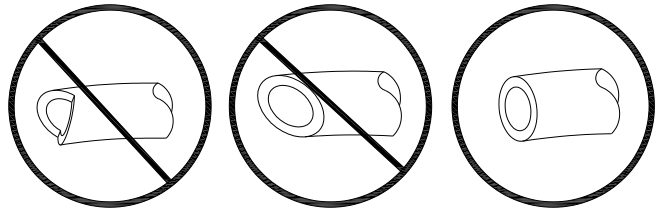
- A- MOUNT FIXTURE IN ACCORDANCE TO MANUFACTURER'S INSTALLATION INSTRUCTIONS.
- B- ASSEMBLE PUSHBUTTONS AND OR SHOWER NOZZLES TO FIXTURE IF REQUIRED.
- C- CONNECT 1/8" O.D. POLYETHYLENE AIR LINE (1) TO PUSHBUTTON (2) AND VALVE TIMER ASSEMBLY (3). SEE DETAILS 'A' & 'B'. HAND TIGHTEN FERRULE NUT (4) PROVIDED.
- D- CONNECT SHOWER RISER (5) TO VALVE ASSEMBLY ELBOW (6). SEE DETAIL 'C' AND 'D'. HAND TIGHTEN FERRULE NUT (7) PROVIDED.
- E- AFTER THOROUGHLY FLUSHING SUPPLY LINES, MAKE UP CONNECTIONS TO VALVE ASSEMBLY INLET(S) 1/2" NPT OR 1/2" NPS FLEX HOSE AS REQUIRED.

PUSH-IN FITTING INSTALLATION

NOTE: FITTINGS AND TUBE SHOULD BE KEPT CLEAN, BAGGED AND UNDAMAGED PRIOR TO INSTALLATION.

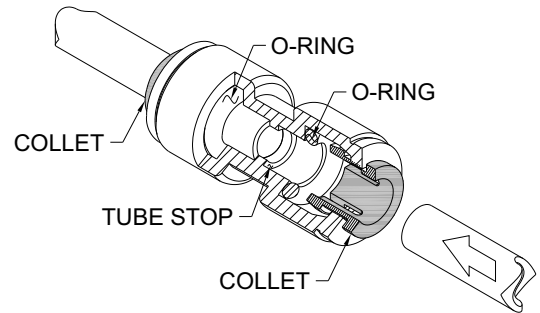
TO CUT TUBE:

Cut to fit length of 1/4" PE tubing and remove any burrs or sharp edges. Ensure that the outside diameter is free from score marks. Tube ends should be square.

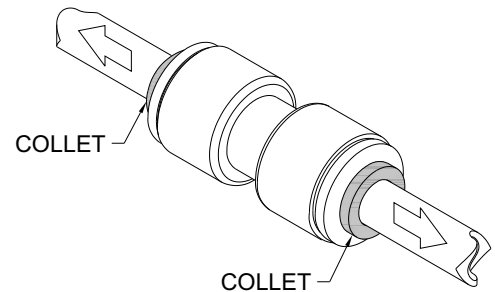


INSERTING THE TUBE:

1. Firmly and fully insert the tubing end into the push-in fitting up to the tube stop located approximately 1/2" deep.



2. Pull on the fitted tubing to ensure it is secure. Tube should not come free from the fitting. Water test the connection assembly prior to leaving the site to ensure there are no leaks.



DISCONNECTING THE TUBE:

To disconnect the tube from the fitting ensure that the water line is depressurized. Push collet square towards the push-in fitting body and hold. While holding the collet in, pull on the PE tubing to remove from the push-in fitting.

