

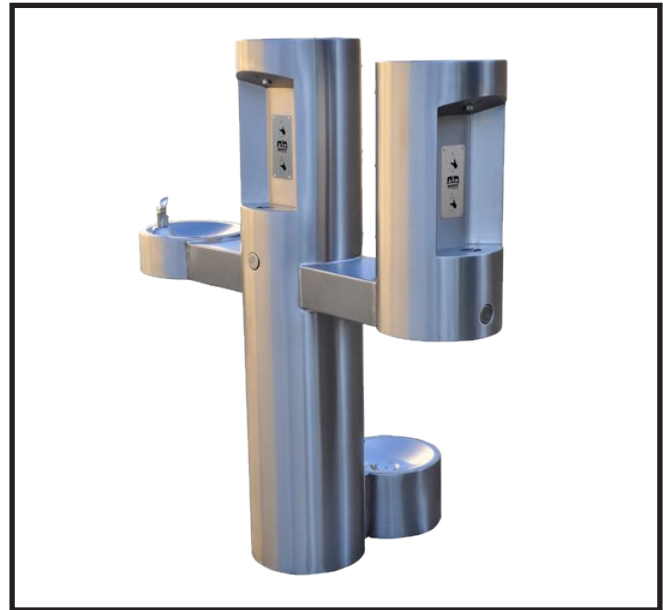
BARRIER-FREE OUTDOOR PEDESTAL DUAL BOTTLE FILLER WITH DRINKING FOUNTAIN

STANDARD FEATURES

- Adult ADA compliant
- Pushbutton and hands free sensor operated Bottle filler
- Battery pack 6-AA
- Laminar flow water supply to bottle filler
- Resistant to sunlight, heat, moisture and wear
- 18 Gage, 304 stainless steel drinking Fountain bowls
- 12 Gage, heavy duty stainless steel construction with corrosion and scratch resistant finish
- Stainless steel, anti-rotation non-squirt bubbler
- 100 mesh inlet strainer
- Lead and cyst filter (Not available with FRU option)
- Access cover, heavy duty stainless steel, vandal resistant

SUGGESTED SPECIFICATIONS

Barrier-free dual bottle filler with drinking fountain shall be Murdock model GYW44. Construction shall be 12 gage, all stainless steel with 18 gage stainless steel fountain bowl. Pedestal base shall have four mounting holes. Access covers shall be secured with vandal-resistant stainless steel screws. Bottle filler shall be activated by a 9 volt sensor or a pushbutton as standard and provide 1.0 GPM flow. Unit shall contain a 100 mesh inlet strainer, lead and cyst filter, 6-AA battery pack and laminar flow spout. Self-closing pushbutton, needing less than 5 pounds force, shall activate internally mounted valve with adjustable stream regulator. Bubbler shall be stainless steel with non-squirt feature and operate on water pressure range of 20-105 psig. Fountain is certified to ANSI A117.1, Public Law 111-380 (NO-LEAD), CHSC 116875 and NSF/ANSI 61, Section 9. Fixture meets ADA requirements when mounted appropriately.



Model GYW44-PF Shown

MODEL:

(Must Specify)

- Satin Stainless Finish (Shown)
- Green Powder-Coated
- Red Powder-Coated
- Blue Powder-Coated

OPTIONAL ACCESSORIES

(additional costs may be incurred)

- CV Cartridge valve on fountain (Not available with freeze-resistant valve)
- FRU3 Underground freeze-resistant, 3 valves¹ (Less filter and sensor)
- FRU4 Underground freeze-resistant, 4 valves¹ (Less filter and sensor)
- IAP In-ground anchor plate
- LOGO Customer specified logo
- MO Bottle filler operated by pushbutton only (Standard with freeze-resistant valves)
- PF Pet fountain ¹

Option Notes:

¹See separate option sheet

Complies with the following standards:



Member of U.S. Green Building Council



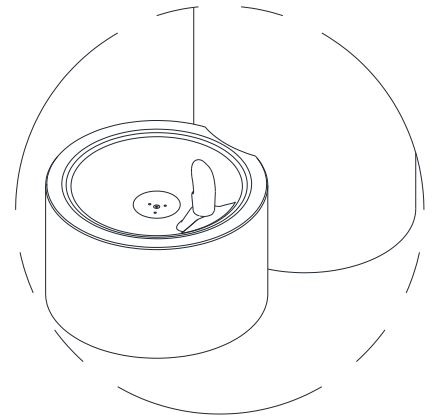
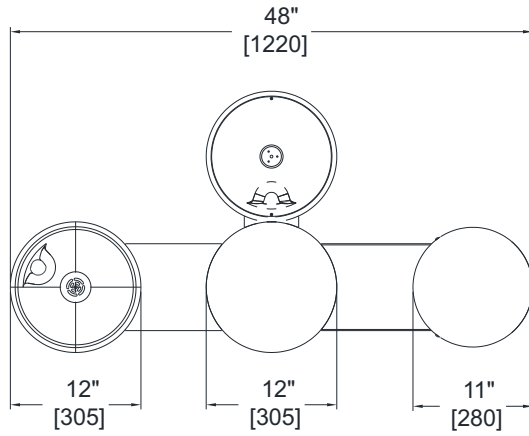
Recyclable Product



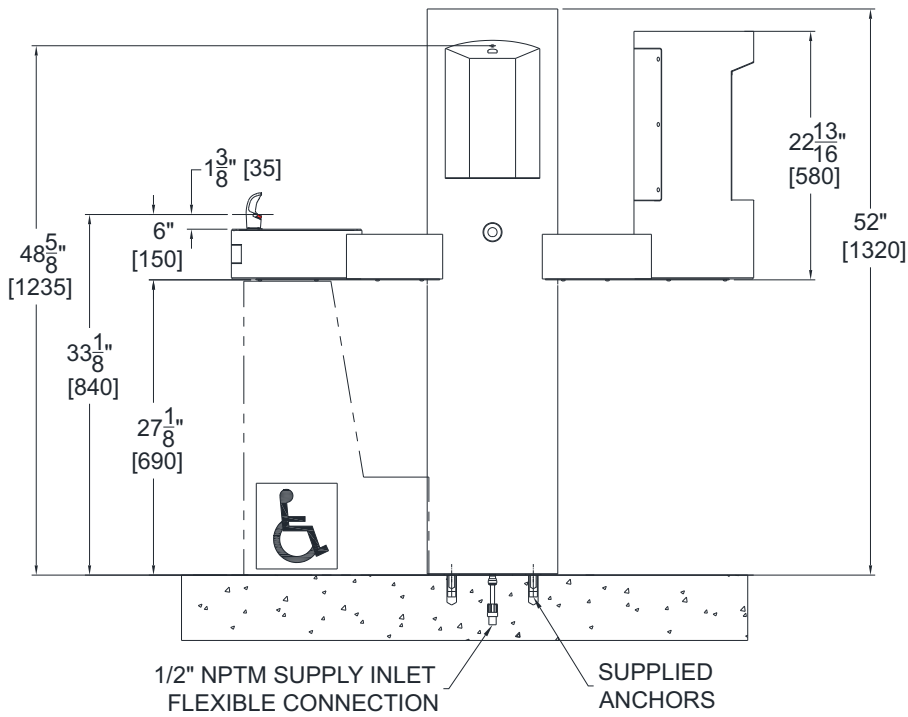
Water Conserving Product

⚠ WARNING: Cancer and Reproductive Harm - www.P65Warnings.ca.gov

**BARRIER-FREE OUTDOOR
PEDESTAL DUAL BOTTLE FILLER
WITH DRINKING FOUNTAIN**



**OPTIONAL -PF PET
FOUNTAIN
DETAIL**



* Valve specifications:
Minimum/Maximum Pressure
30 to 100 psi.