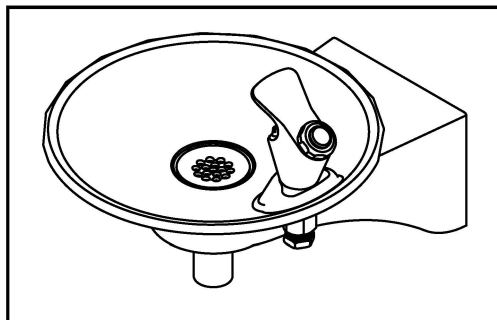
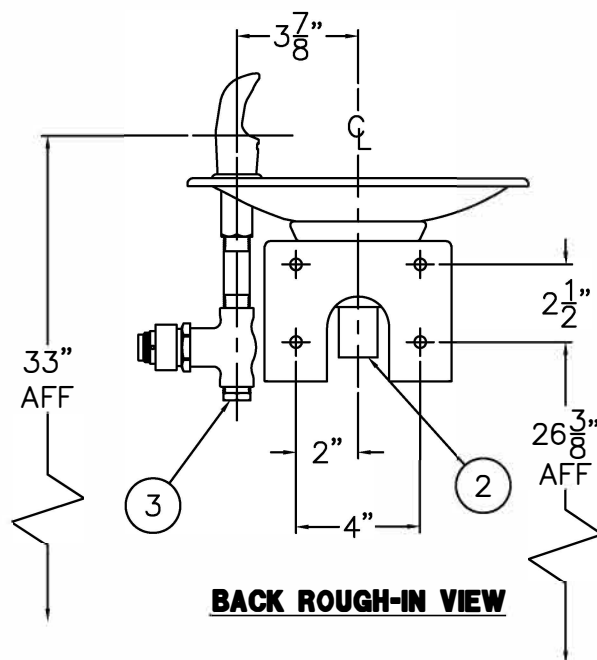
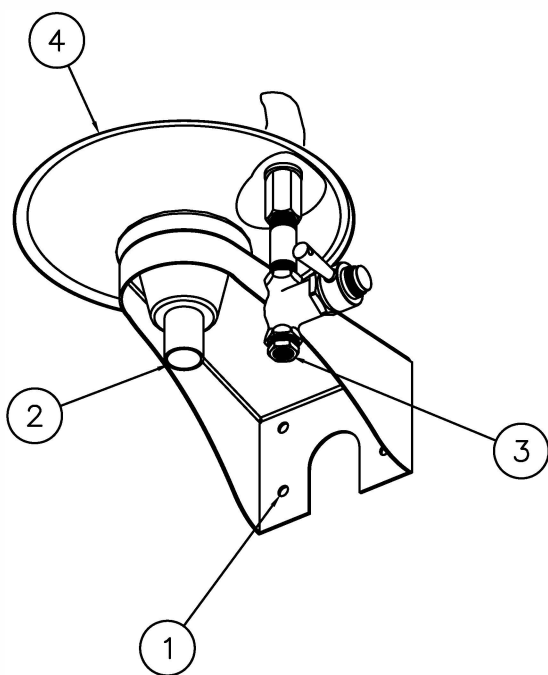
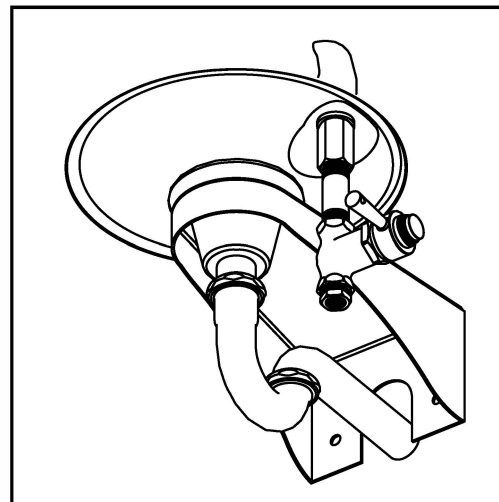


**PUSHBUTTON BUBBLER**



**OPTIONAL -PT1 1-1/4" O.D. P-TRAP**



**BACK ROUGH-IN VIEW**

**INSTALLATION INSTRUCTIONS:**

- A- STRUCTURALLY REINFORCE THE WALL BEHIND THE FOUR 3/8" DIAMETER MOUNTING HOLES ① AT THE DIMENSIONS SHOWN AND INSTALL WALL ANCHORS BY OTHERS.
- B- ROUGH-IN WASTE OUTLET FOR THE 1-1/4" OUTER DIAMETER PLAIN END TAILPIECE ②.
- C- ROUGH-IN WATER SUPPLY ③ AT DIMENSION SHOWN FOR 3/8" NPT FEMALE LEVER VALVE SUPPLY INLET. RECOMMENDED UNION AND SHUTOFF VALVE TO BE SUPPLIED BY OTHERS.
- D- CAREFULLY REMOVE FIXTURE ④ AND COMPONENTS FROM THE PACKAGING PREVENTING SCRATCHING AND DAMAGE.
- E- SECURELY ANCHOR FIXTURE ④ TO WALL THRU MOUNTING HOLES ① WITH ANCHORING HARDWARE BY OTHERS.
- G- MAKE-UP 1-1/4" O.D. WASTE CONNECTION TO TAILPIECE ②.
- H- FLUSH WATER SUPPLY ③ BY OTHERS OF ALL DEBRIS PRIOR TO CONNECTING TO FIXTURE.
- I- CONNECT THE WATER SUPPLY ③ BY OTHERS TO 3/8" NPT FEMALE INLET. STOP ON THE SUPPLY IS RECOMMENDED.

TITLE

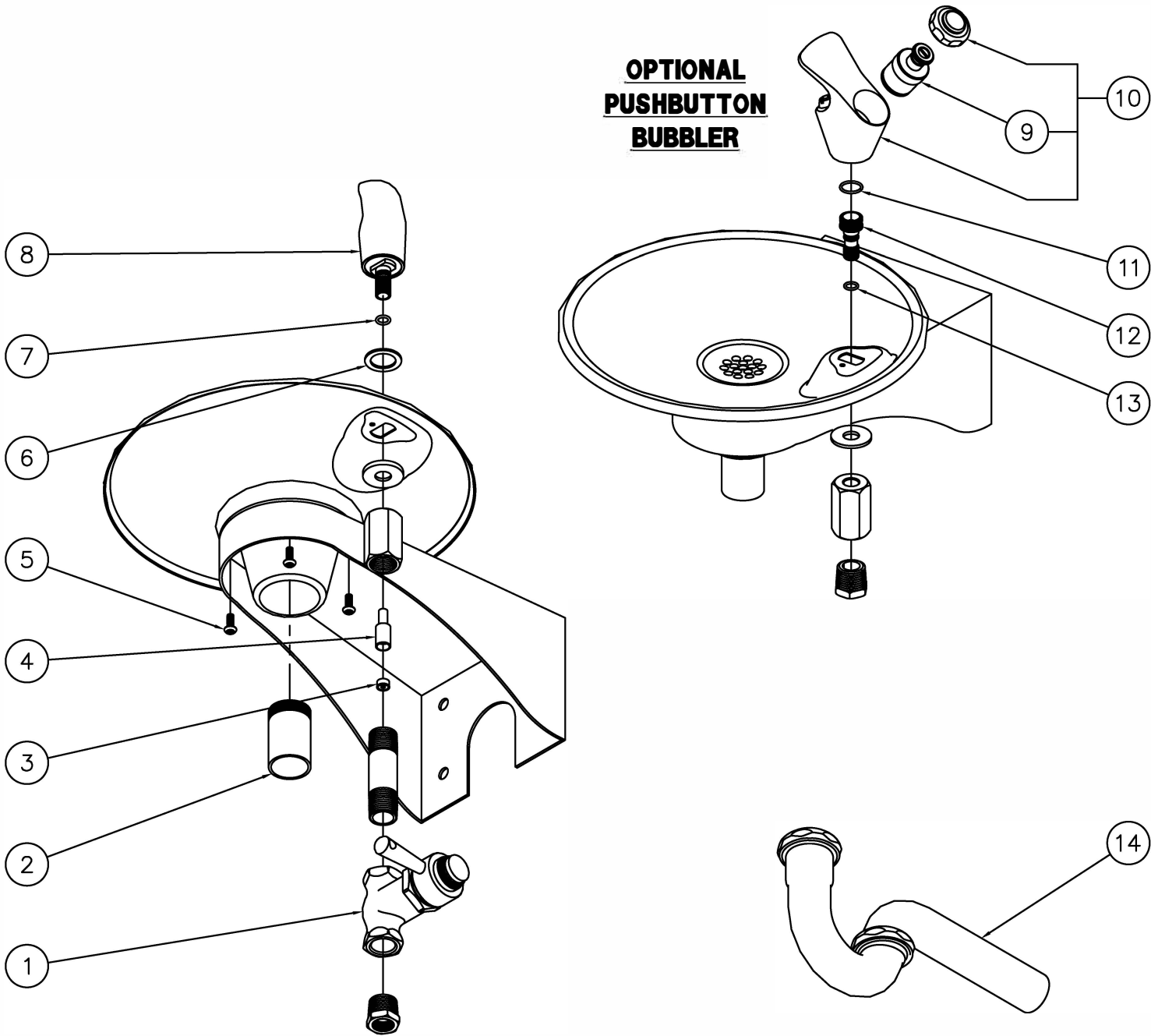
**ROUND BOWL WALL MOUNTED DRINKING FOUNTAIN**

**JANUARY 2006  
TO PRESENT**

**10-21-08**  
DATE REVISED  
**05/20/16**

DRAWING NUMBER

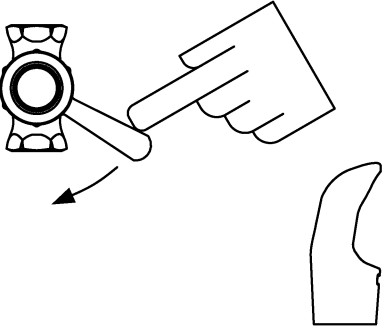

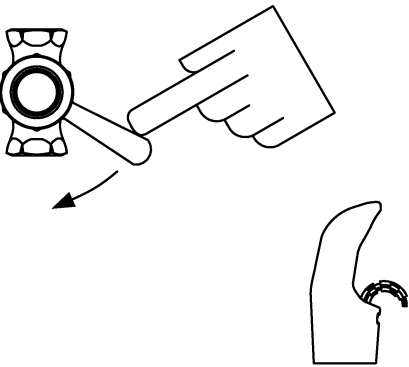
**9938-250-0M1**



**OPTIONAL -PT1 1-1/ 4" O.D. P-TRAP**

1	7018-010-199	SELF CLOSING LEVER VALVE	8	7018-112-199	SOLID STAINLESS STEEL BUBBLER
2	4952-002-000	1-1/4" OUTER DIAMETER TAILPIECE	9	7000-060-000	VALVE CARTRIDGE
3	0471-010-000	FLOW REGULATOR	10	2990-013-002	DECK MOUNTED SST PUSHBUTTON BUBBLER
4	7018-008-199	FLOW REGULATOR ADAPTER	11	0404-015-000	O-RING
5	0112-056-000	CENTER REJECT ALLEN BUTTON HEAD SCREW	12	7018-011-199	BUBBLER ADAPTER
6	7000-007-000	BUBBLER GASKET	13	0404-011-000	O-RING
7	0404-011-000	O-RING	14	4953-002-000	1-1/4" x 1-1/4" OUTER DIAMETER P-TRAP
ITEM	PART NUMBER	DESCRIPTION	ITEM	PART NUMBER	DESCRIPTION
		TITLE <b>ROUND BOWL WALL MOUNTED DRINKING FOUNTAIN</b>			
		MANUFACTURE DATE <b>JANUARY 2006 TO PRESENT</b>		DATE ISSUED <b>10/21/08</b>	
				DATE REVISED <b>05/20/16</b>	
		DRAWING NUMBER <b>9938-250-5M0</b>			

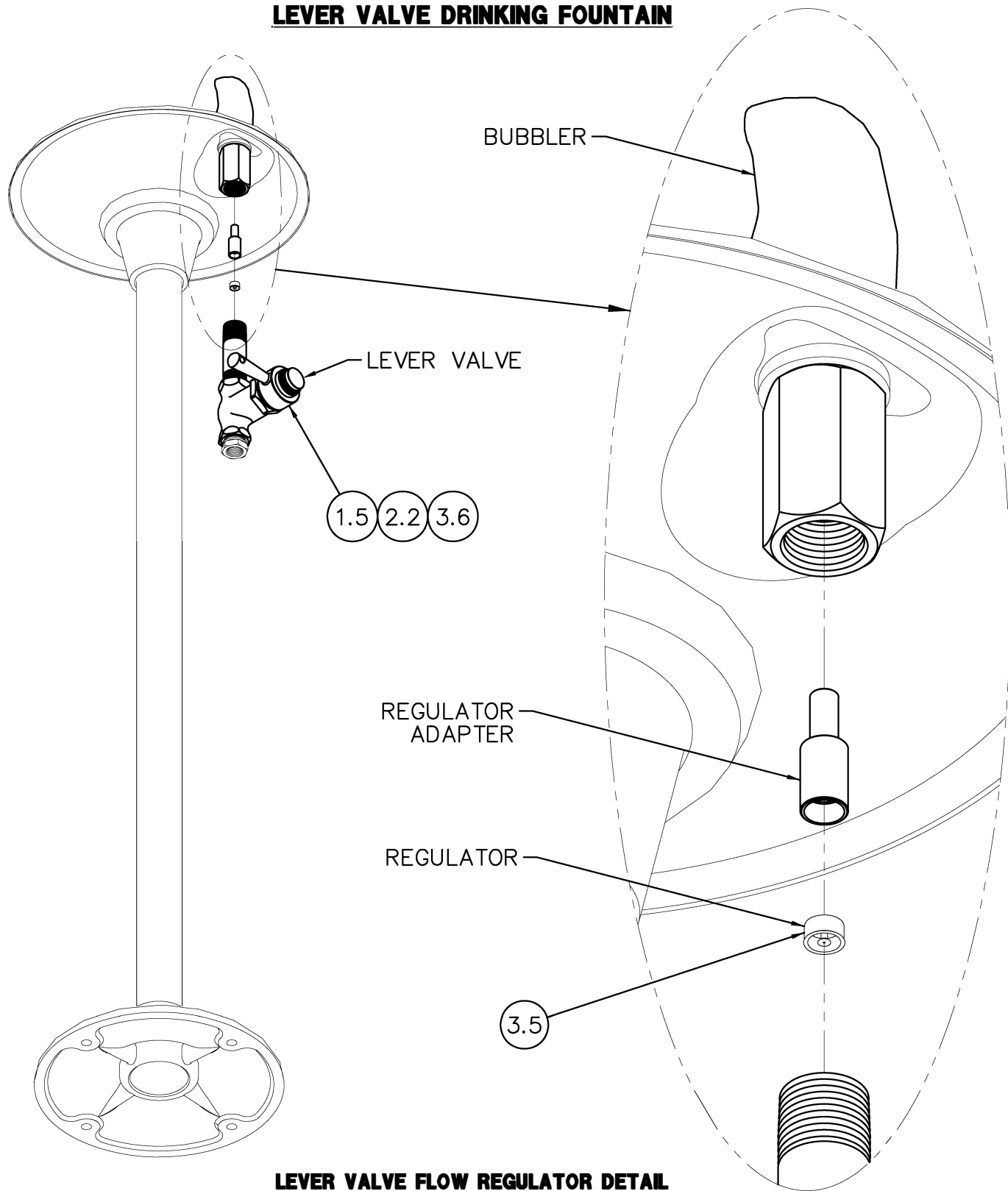
**LEVER VALVE DRINKING FOUNTAIN**

<b>CONDITION:</b>	<b>SOLUTION:</b>
<p><b>NO WATER FLOW:</b></p> 	<ul style="list-style-type: none"> <li>1.1 Check water main supply – open.</li> <li>1.2 Inspect stop (by others) – open &amp; no debris.</li> <li>1.3 Inspect strainer (by others) for debris – clean.</li> <li>1.4 Inspect flow regulator for debris – clean or replace.</li> <li>1.5 Replace lever valve.</li> </ul>
<p><b>WATER DRIPS / WILL NOT SHUT OFF:</b></p> 	<ul style="list-style-type: none"> <li>2.1 Inspect lever valve for debris – clean.</li> <li>2.2 Replace lever valve.</li> </ul>
<p><b>REDUCED WATER FLOW:</b></p> 	<ul style="list-style-type: none"> <li>3.1 Check water main supply for 20 psig minimum flow pressure.</li> <li>3.2 Inspect stop (by others) – open &amp; no debris.</li> <li>3.3 Inspect strainer (by others) for debris – clean.</li> <li>3.4 Inspect bubbler for debris – clean.</li> <li>3.5 Inspect flow regulator for debris – clean or replace.</li> <li>3.6 Replace lever valve.</li> </ul>

Refer to drawing #9940–206–OM1 for Lever Valve Maintenance Detail to locate solutions above.

	UFACTURE DATE <b>JANUARY 2006</b> <b>TO PRESENT</b>		DATE ISSUED <b>10/21/08</b> DATE REVISED	DRAWING NUMBER <b>9940-205-OM1</b>

**LEVER VALVE DRINKING FOUNTAIN**



**LEVER VALVE FLOW REGULATOR DETAIL**

Refer to drawing #9940-205-OM1 for Valve Maintenance Instructions numbered solutions detailed above.

**LEVER VALVE MAINTENANCE INSTRUCTIONS**

**JANUARY 2006  
TO PRESENT**

DATE ISSUED  
**10/21/08**  
DATE REVISED

DRAWING NUMBER  
**9940-206-OM1**