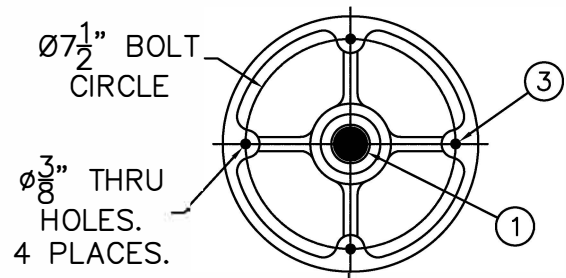
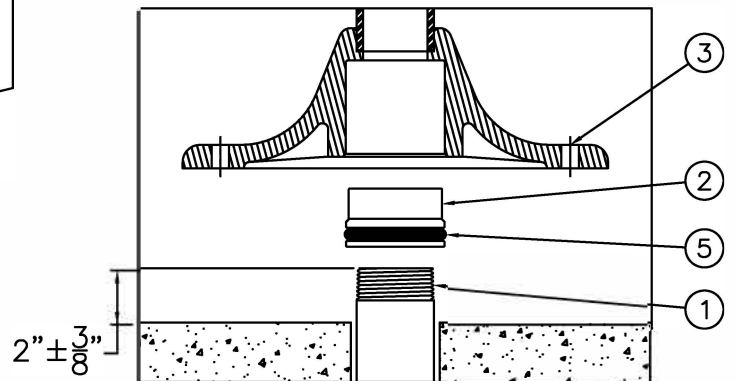
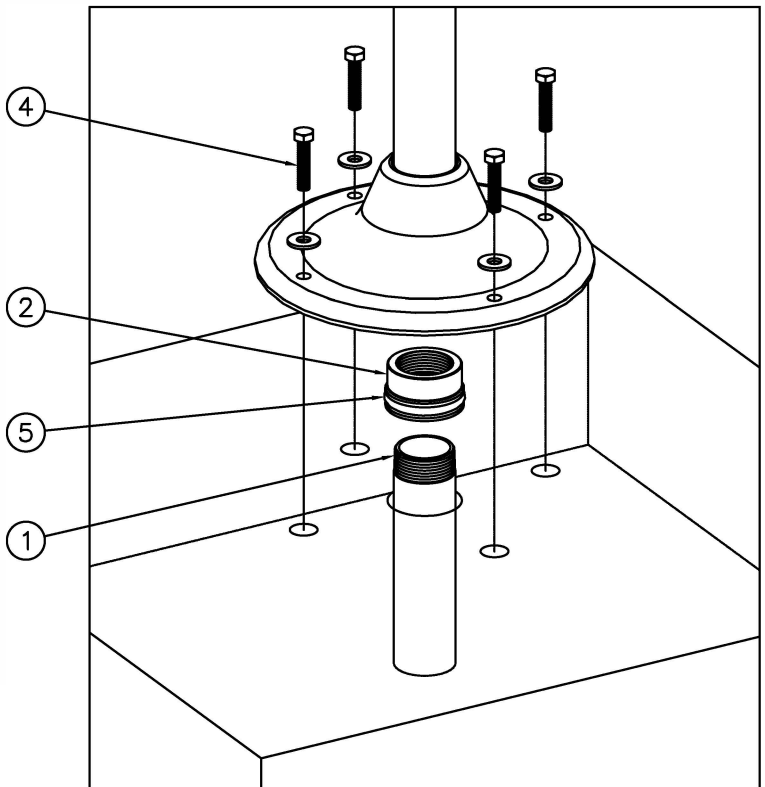
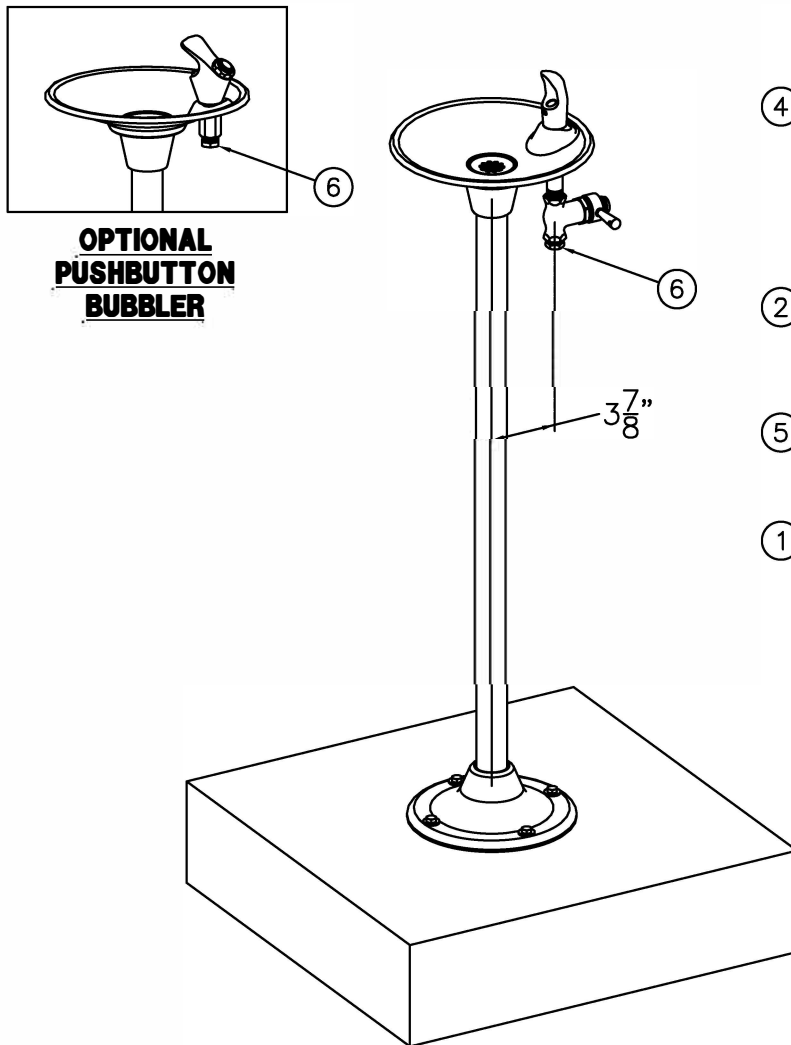


# INSTALLATION INSTRUCTIONS

## CONTEMPORARY DRINKING FOUNTAIN



### INSTALLATION INSTRUCTIONS:

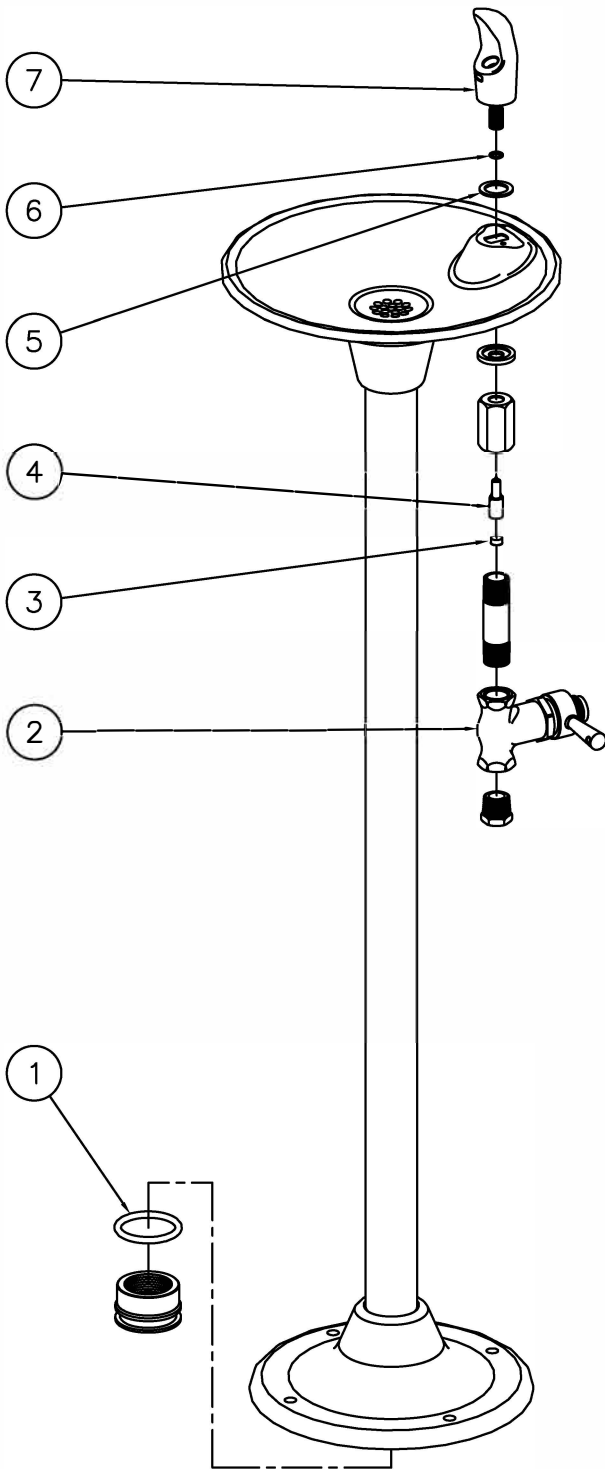
- A- PROVIDE STRUCTURALLY SOUND FOUNDATION FOR ANCHORING OF FOUNTAIN WHERE WATER WILL NOT POOL AND ROUGH-IN WASTE OUTLET (1) 2" HIGH ( $\pm 3/8$ ") AT FOUNTAIN CENTERLINE FOR 1-1/4" NPT FEMALE WASTE OUTLET ADAPTER (2).
- B- PROVIDE FOUR FLOOR ANCHORING LOCATIONS AS SHOWN IN BASE FOOTPRINT DETAIL. HOLES (3) THRU BASE ARE 3/8" DIAMETER. FLOOR ANCHORS AND ANCHORING HARDWARE (4) TO BE PROVIDED BY INSTALLER.
- C- ASSEMBLE WASTE ADAPTER (2) TO 1-1/4" NPT WASTE PIPE (1) BY OTHERS. DO NOT DAMAGE O-RING (5) ON ADAPTER.
- D- LUBRICATE O-RING (5). O-RING LUBRICANT TO BE PROVIDED BY INSTALLER. CAREFULLY SET FOUNTAIN STRAIGHT DOWN OVER THE WASTE ADAPTER (2) WITHOUT JAMMING TO ENSURE THE O-RING (5) DOES NOT ROLL OFF ADAPTER (2).
- E- SECURE FOUNTAIN TO FOUNDATION USING HARDWARE (4) BY OTHERS.
- F- PROVIDE WATER SUPPLY WITH UNION AND SHUTOFF VALVE BY OTHERS TO 3/8" NPT FEMALE INLET (6). NOTE: FLUSH WATER SUPPLY OF ALL DEBRIS PRIOR TO CONNECTING TO FOUNTAIN.

**JANUARY 2006  
TO PRESENT**

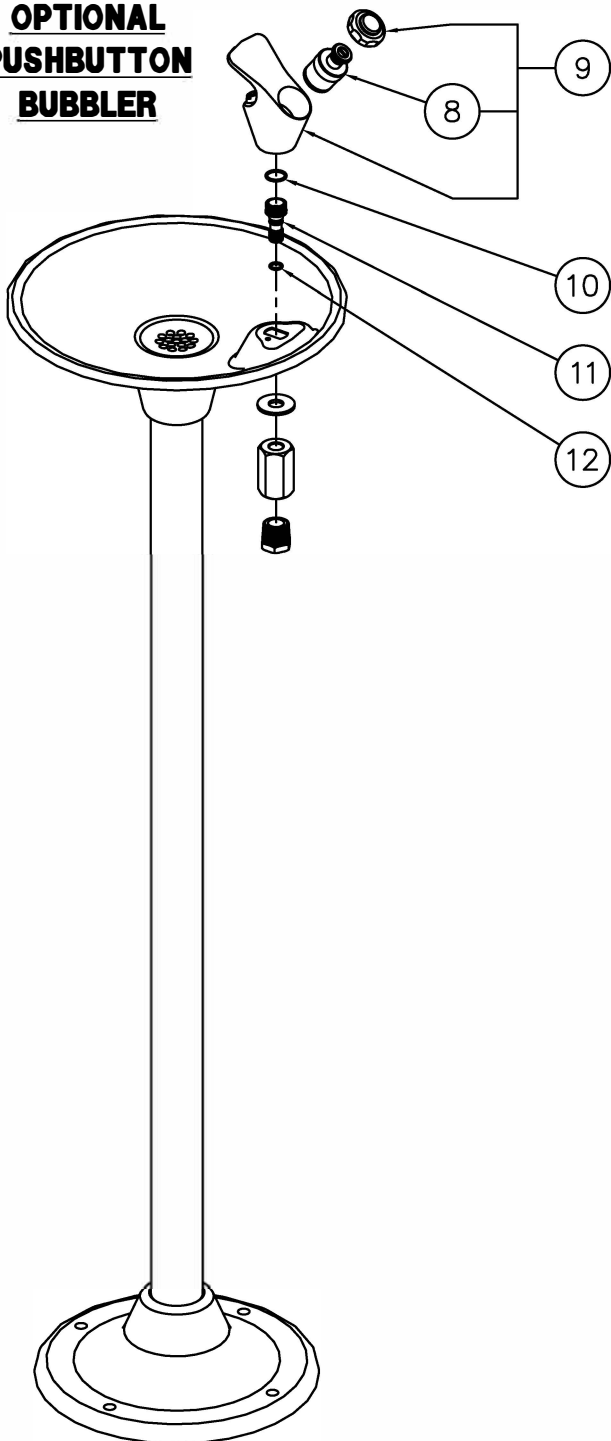
DATE ISSUED  
**10/21/08**  
DATE REVISED  
**08/14/12**

DRAWING NUMBER  
**9938-255-0M1**

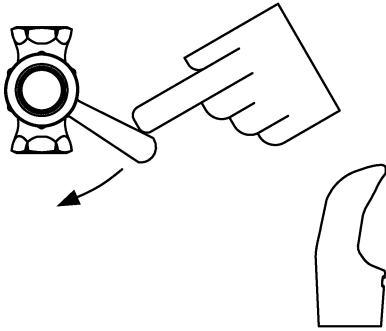
CONTEMPORARY DRINKING FOUNTAIN



OPTIONAL  
PUSHBUTTON  
BUBBLER



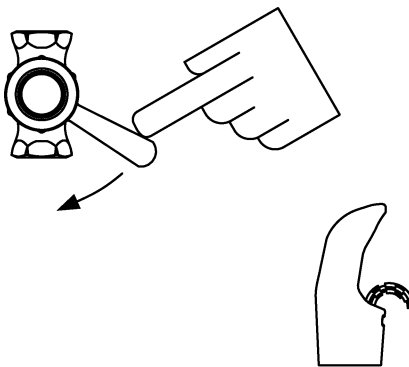
1	0401-327-000	O-RING	7	7018-112-199	SOLID STAINLESS STEEL BUBBLER	
2	7018-010-199	SELF CLOSING LEVER VALVE	8	7000-060-000	VALVE CARTRIDGE	
3	0471-010-000	FLOW REGULATOR	9	2990-013-002	DECK MOUNTED SST PUSHBUTTON BUBBLER	
4	7018-008-199	FLOW REGULATOR ADAPTER	10	0404-015-000	O-RING	
5	7000-007-000	BUBBLER GASKET	11	7018-011-199	BUBBLER ADAPTER	
6	0404-011-000	O-RING	12	0404-011-000	O-RING	
ITEM	PART NUMBER	DESCRIPTION	ITEM	PART NUMBER	DESCRIPTION	
		TITLE <b>STEEL PIPE PEDESTAL MOUNTED DRINKING FOUNTAIN</b>				
		MANUFACTURE DATE		DATE ISSUED		DRAWING NUMBER
		<b>JANUARY 2006 TO PRESENT</b>		<b>10/21/08</b>		
				DATE REVISED <b>05/19/16</b>		
		<b>9938-255-5M0</b>				

**LEVER VALVE DRINKING FOUNTAIN**
**CONDITION:**
**SOLUTION:**
**NO WATER FLOW:**


- 1.1 Check water main supply – open.
- 1.2 Inspect stop (by others) – open & no debris.
- 1.3 Inspect strainer (by others) for debris – clean.
- 1.4 Inspect flow regulator for debris – clean or replace.
- 1.5 Replace lever valve.

**WATER DRIPS / WILL NOT SHUT OFF:**


- 2.1 Inspect lever valve for debris – clean.
- 2.2 Replace lever valve.

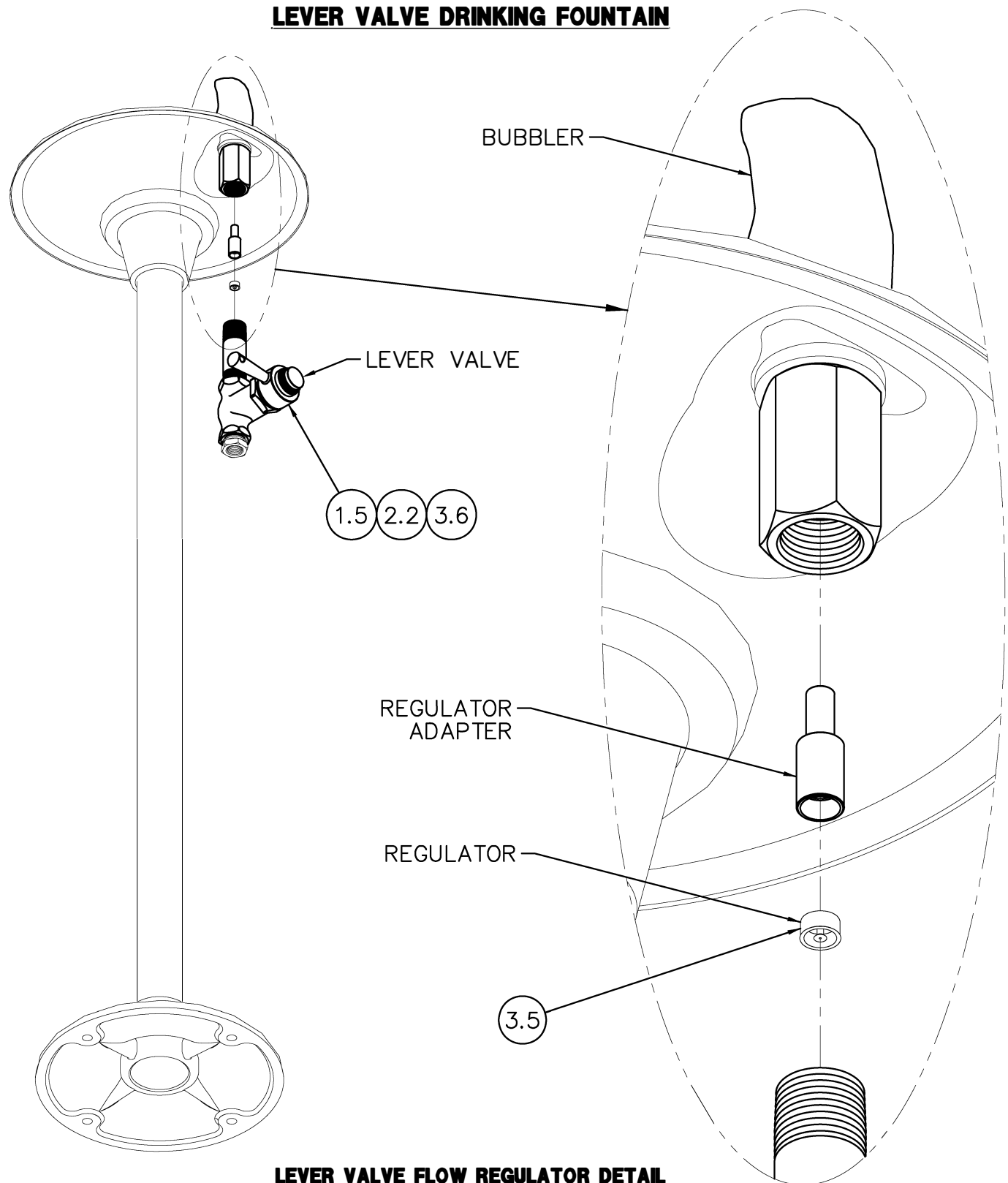
**REDUCED WATER FLOW:**


- 3.1 Check water main supply for 20 psig minimum flow pressure.
- 3.2 Inspect stop (by others) – open & no debris.
- 3.3 Inspect strainer (by others) for debris – clean.
- 3.4 Inspect bubbler for debris – clean.
- 3.5 Inspect flow regulator for debris – clean or replace.
- 3.6 Replace lever valve.

Refer to drawing #9940–206–OM1 for Lever Valve Maintenance Detail to locate solutions above.

	UFACTURE DATE	DATE ISSUED	DRAWING NUMBER
	JANUARY 2006  TO PRESENT	10/21/08	9940-205-OM1
		DATE REVISED	

**LEVER VALVE DRINKING FOUNTAIN**



**LEVER VALVE FLOW REGULATOR DETAIL**

Refer to drawing #9940-205-OM1 for Valve Maintenance Instructions numbered solutions detailed above.

**LEVER VALVE MAINTENANCE INSTRUCTIONS**

**JANUARY 2006  
TO PRESENT**

DATE ISSUED  
**10/21/08**  
DATE REVISED

DRAWING NUMBER  
**9940-206-OM1**