

WALL MOUNTED, SENSOR/ PUSHBUTTON OPERATED OUTDOOR BOTTLE FILLER

STANDARD FEATURES

- 115v Plug-in transformer
- Pushbutton and hands free sensor operated bottle filler
- 100 mesh inlet strainer
- Laminar flow water supply
- 1.0 GPM fill rate
- Lead-free
- Lead and cyst filter for bottle filler
- Meets ADA forward and side reach requirements
- Vandal-resistant design
- Resistant to sunlight, heat, moisture and wear

SUGGESTED SPECIFICATIONS

Model M-OBA4 is a wall mounted, vandal resistant round bottle filler. Bottle filler shall be activated by a 9-volt sensor or a pushbutton as standard. Unit shall contain a 100-mesh inlet strainer, lead and cyst filter and laminar flow spout. Access covers shall be secured with vandal-resistant stainless steel screws. A self-closing pushbutton, needing less than 5 pounds force, shall activate an internally mounted valve. When installed properly, the bottle filler complies with ADA forward and side reach requirements. Bottle filler is fabricated of type 304 stainless steel. Unit complies with ANSI A117.1, Public Law 111-380 (NO-LEAD), CHSC 116875 and NSF/ANSI 61, Section 9.



MODEL:

(Must Specify)

PUSHBUTTON AND SENSOR OPERATION

- Satin Stainless Finish (Shown)
- Green Powder-Coated
- Red Powder-Coated
- Blue Powder-Coated

Custom color finishes available upon request

OPTIONS

(additional costs may be incurred)

- BAT Battery operated
- CSC Concealed support carrier
- FRA1 Freeze resistant valve, single valve (Less filter and sensor)
- MO Bottle filler operated by pushbutton only (Standard with freeze-resistant valves)

Complies with the following standards:



NSF/ANSI 61



C



Federal Public Law 111-380 (No Lead)



Test rating conditions are compliant with ARI 1010.



Member of U.S. Green Building Council

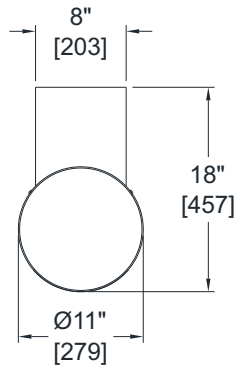


Recyclable Product



Water Conserving Product

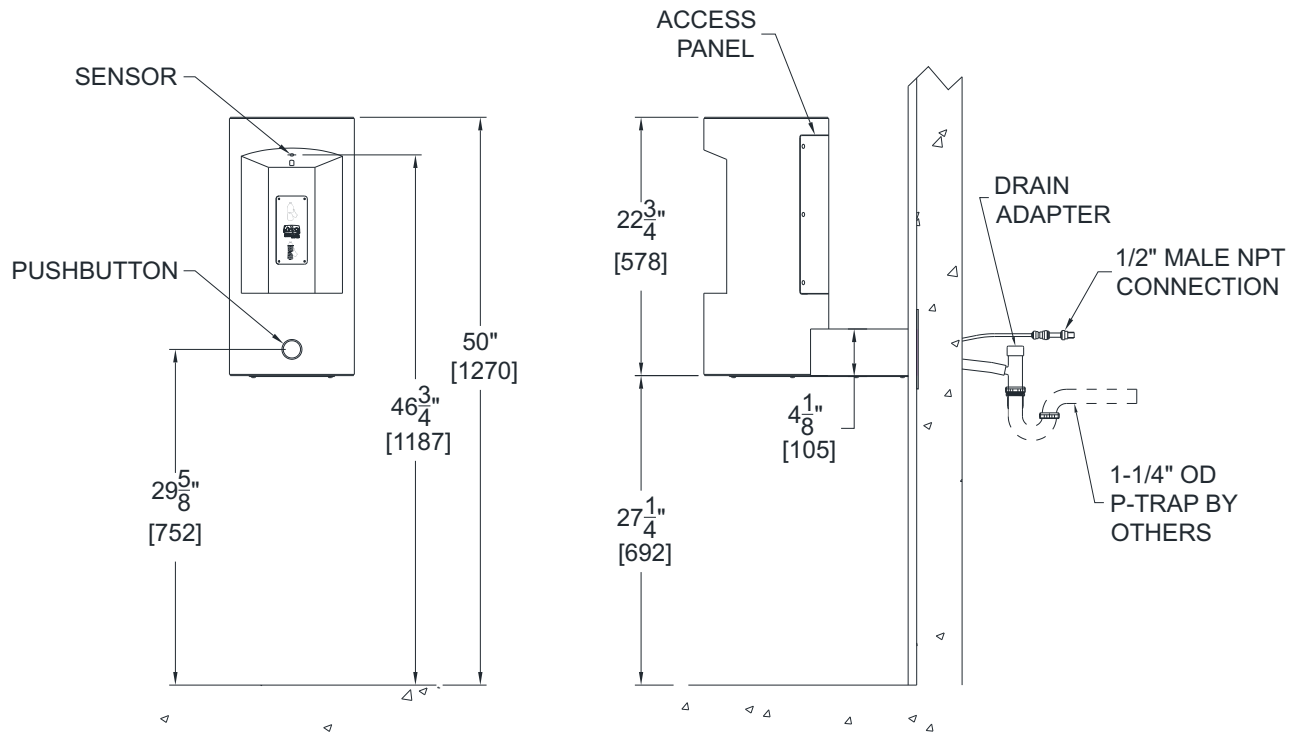
⚠ WARNING: Cancer and Reproductive Harm - www.P65Warnings.ca.gov



WALL MOUNTED, SENSOR/PUSHBUTTON OPERATED OUTDOOR BOTTLE FILLER

GENERAL NOTES:

1. ALL DIMENSIONS ARE IN INCHES [MM]
2. STOP VALVE NOT PROVIDED



ONE YEAR LIMITED WARRANTY - Parts are warranted for one (1) year from date of shipment.