
Age Group:

2-12 Years

Recommended Crew:

Minimum 2-4 People

Tools Required for Assembly:

T-30 TORX Bit

3/16" x 6" Drill Bit

Tape Measure

Level

High Speed 3/8" electric drill w/ clutch

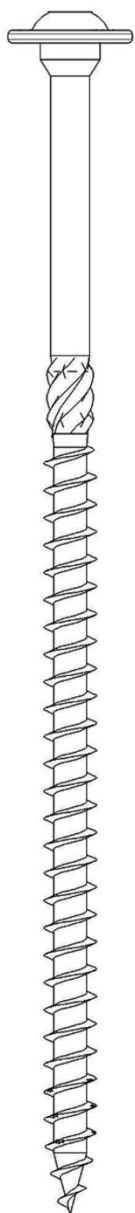
Installation Time:

15 minutes – 30 minutes

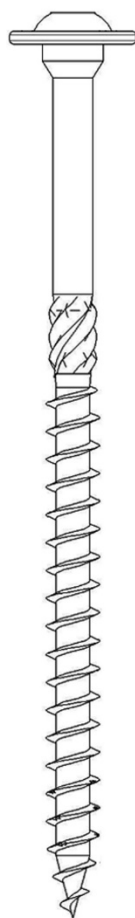
This space intentionally left blank.

Standard Hardware

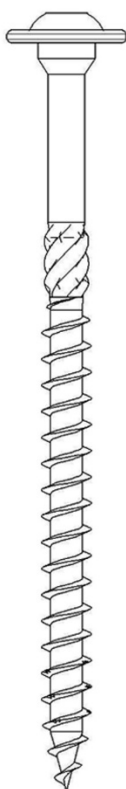
5/16" x 5" RSS
Stainless



5/16" x 4" RSS
Stainless



5/16" x 3-1/8" RSS
Stainless



5/16" x 2-1/2" RSS
Stainless



1/4" x 2-1/2" RSS
Stainless



#10 x 2-1/2" R4
Stainless



NOT TO SCALE!

Pre-Installation Check

Check off all items received, against the packing list. Notify your local sales representative immediately of any items that are missing or that may be damaged.

Before beginning your playground installation, make sure that you have reviewed “Playtopia’s Installation Guideline Manual” that was provided with your playground. If you did not receive a copy of the manual please contact your local sales representative to have a copy mailed or emailed to you.

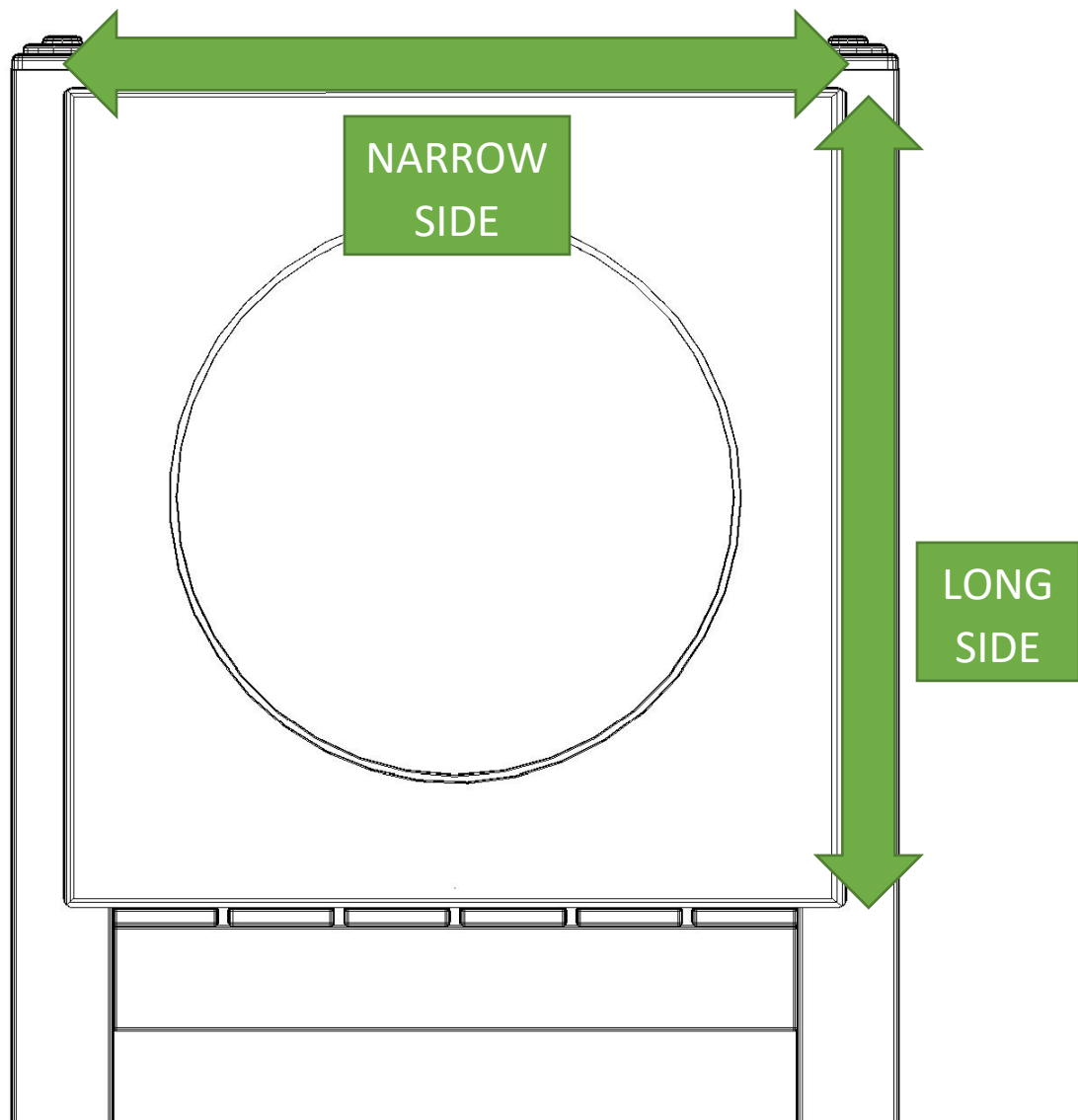
TERRABOUND SOLUTIONS IS NOT
RESPONSIBLE
FOR ITEMS DISCOVERED MISSING
AFTER 72 HOURS FROM TIME OF
DELIVERY.

**PRE-DRILLING IS REQUIRED. ALL LOCATIONS WHERE
HARDWARE IS TO BE FASTENED REQUIRES PRE-
DRILLING TO ENSURE PROPER INSTALLATION AND
STRUCTURAL INTEGRITY. WE ARE NOT RESPONSIBLE
FOR INSTALLATION OR STRUCTURAL ISSUES THAT
ARISE FROM NOT PRE-DRILLING ATTACHMENTS.**

Crawl Tunnel Assembly

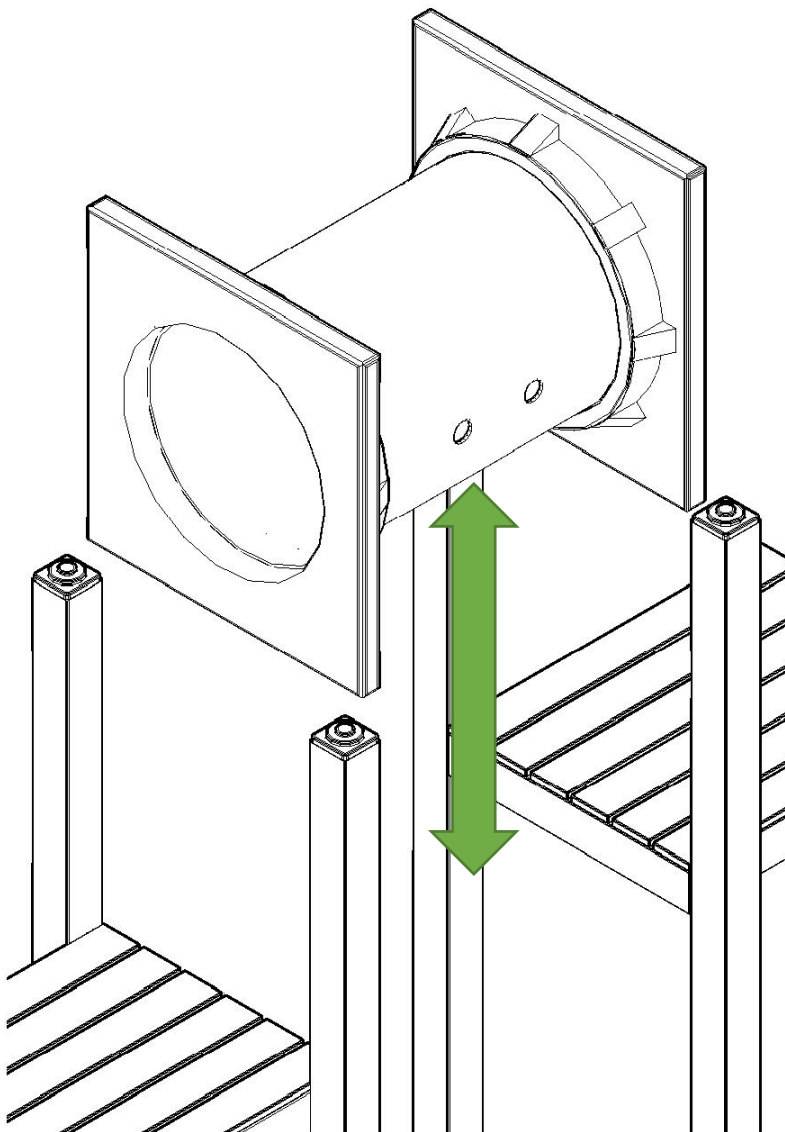
IMPORTANT!

The crawl tunnel you are about to install may look the same either way you rotate, but there is a difference! Measure both sides of your crawl tunnel panel to ensure which side is narrow and which side is the long. The long side of the panel must be installed parallel to the upright posts. The narrow side will run parallel to the surface of the deck platform.



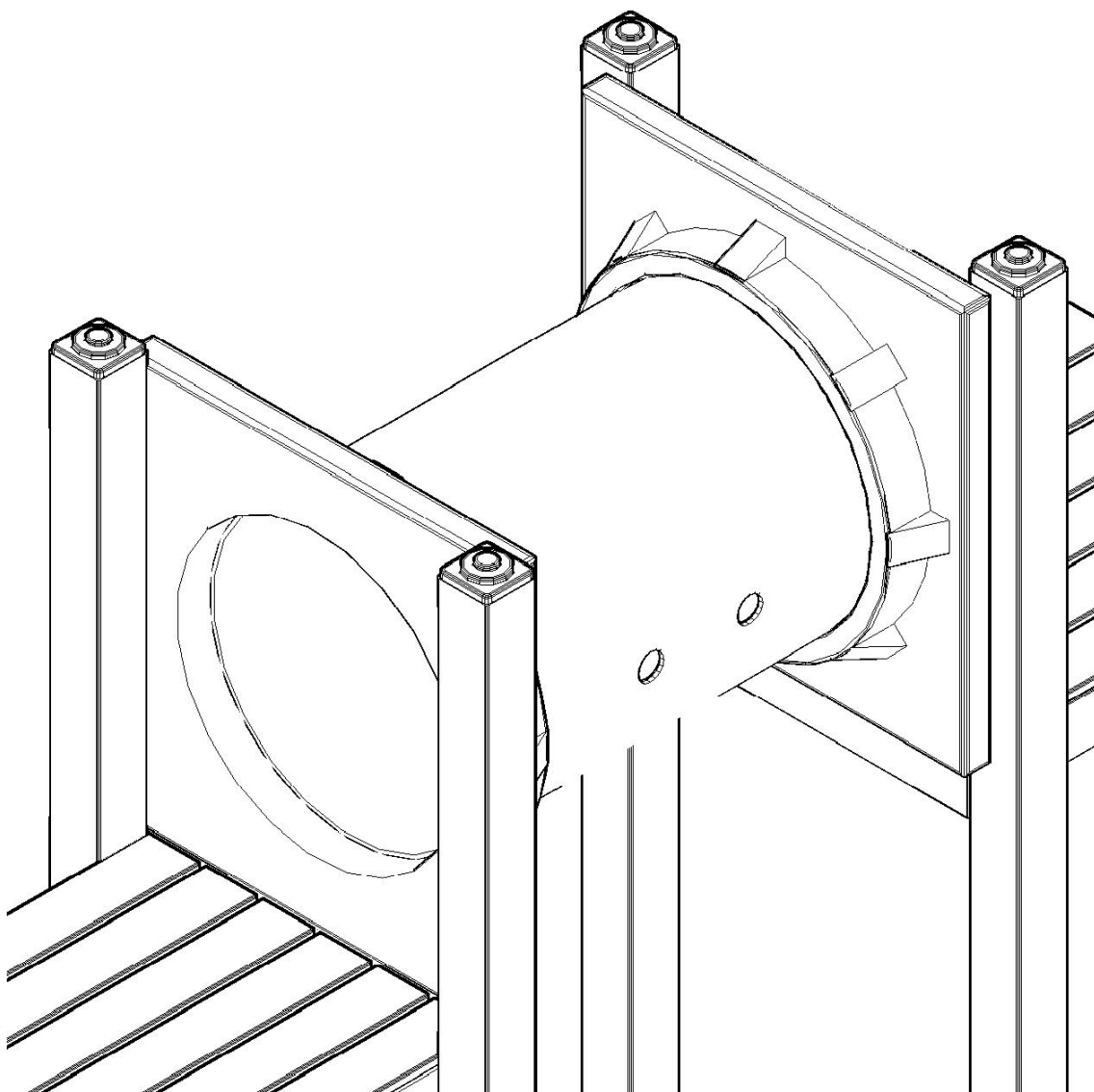
Crawl Tunnel Assembly (Contd.)

When installing a crawl tunnel please reference the play structure footer drawings for proper footing dimensions associate with the kind of tunnel you are installing. All crawl tunnels whether straight, curved, or inclined, fasten in the exact same manner and this installation can be used as reference for your particular tunnel.



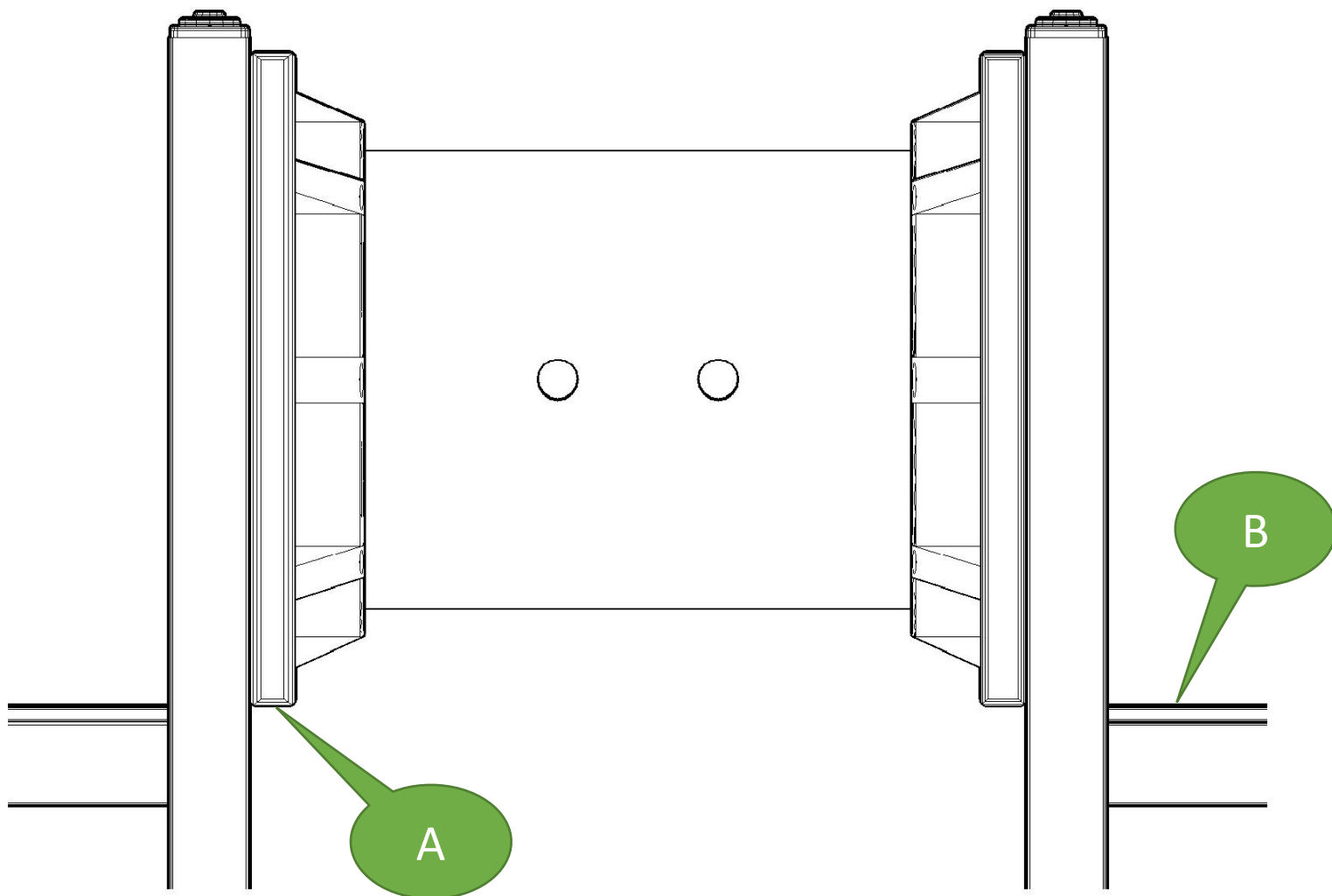
Crawl Tunnel Assembly (Contd.)

When installing a crawl tunnel please reference the play structure footer drawings for proper footing dimensions associate with the kind of tunnel you are installing. All crawl tunnels whether straight, curved, or inclined, fasten in the exact same manner and this installation can be used as reference for your particular tunnel.



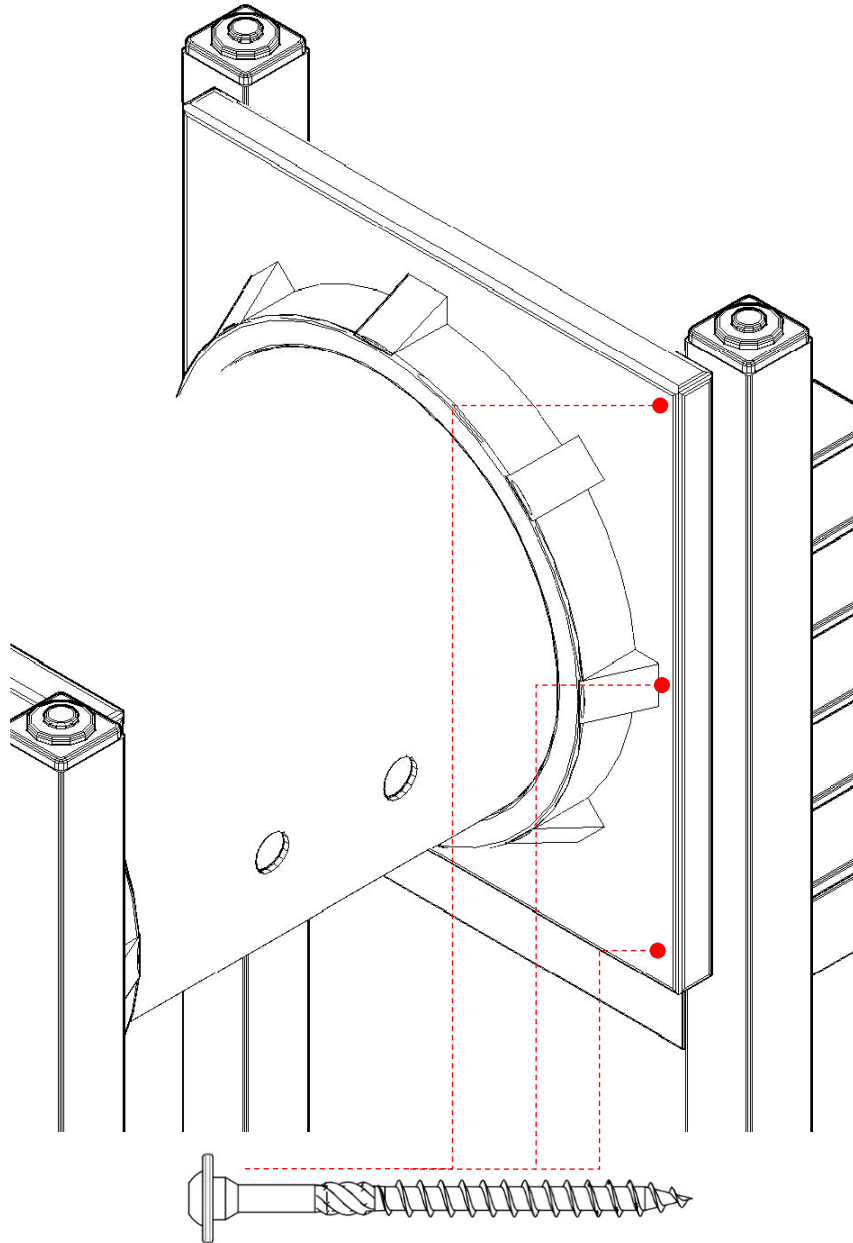
Crawl Tunnel Assembly (Contd.)

To ensure proper placement of the tunnel before fastening make sure that the flat side of the bottom of the tunnel panel (A) is installed within a 1" +/- from the top of the deck platform (B).



Crawl Tunnel Assembly (Contd.)

Once the tunnel is lined up properly, pre-drill through the plastic tunnel, at the approximate locations marked below with a 3/16" bit, and into the post. Then fasten a total of **(12)** 5" RSS SS Screws with washer (3 per side) through the same locations on the crawl tunnel panel and into the 6x6 post.



ValuMax Tunnel Assembly

The ValuMax Tunnel has the same installation process as the previous pages indicate. However, careful notice should be taken of the orientation of the tunnel panel. See the diagram below for proper assembly.

