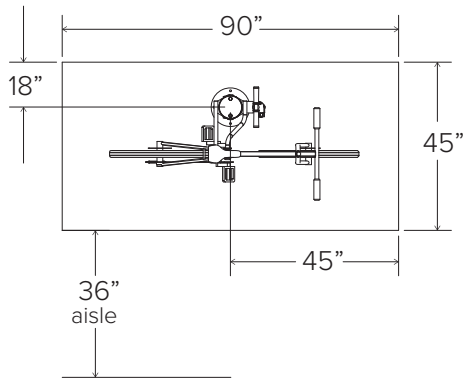
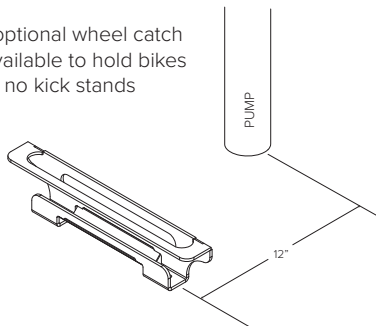


Fixit with Air Kit Prime



Minimum Footprint

An optional wheel catch is available to hold bikes with no kick stands



CAPACITY

- ☐ **1 Bike** (One set of hanger arms)
- ☐ **2 Bikes** (Two sets of hanger arms)

MATERIALS

Main body: 6" x 12g tube
Bike Hanger: 1" solid round bar
Foot: 10" dia. x .25" plate
Tool tethers: 3/16" stainless steel cable
Manual air pump
Hand tools:
 Philips and flat head screwdrivers
 2.5, 3, 4, 5, 6, 8mm Allen wrenches
 T25 Torx wrench
 32mm Headset wrench
 15mm Pedal wrench
 8, 9, 10, 11mm box wrenches
 Tire levers (2)

FINISHES

- ☐ **Galvanized**
 An after fabrication hot dipped galvanized finish is our standard option.
- ☐ **Powder Coat**
 Our powder coat finish assures a high level of adhesion and durability by following these steps:
 1. Sandblast
 2. Epoxy primer electrostatically applied
 3. Final thick TGIC polyester powder coat

MOUNT OPTIONS

Surface only
 Fixit has 10" diameter x.25" foot with four anchors per foot. Tamper-resistant fasteners are included.

PUMP OPTIONS

- ☐ **No Pump**
- ☐ **Air Kit Prime**
- ☐ Attached to Fixit
- ☐ Separate
- ☐ **Air Kit 4**

CANE STOP

- ☐ **Add Cane Stop** (Galvanized only)

A cane-detectable attachment beneath the hanger arms is available for improved safety. (Additional cost)

