



32 Gallon Skyline Trash Receptacle and Accessories

Skyline Trash Receptacle Models:

RSL32-I-00-000

RSL32-I-00-001

RSL32-I-00-002

RSL32-I-00-003

RSL32-I-00-004

RSL32-H-00-000

RSL32-H-00-001

RSL32-H-00-002

RSL32-H-00-003

RSL32-H-00-004

RSL32-G-00-000

RSL32-G-00-001

RSL32-G-00-002

RSL32-G-00-003

RSL32-G-00-004



Parts, Hardware, and Suggested Tools

Unit Common Description	Units Per Model
Skyline Trash Receptacle	1
Choice of Top	1
Liner	1
5/16-18 x 1 1/2" tap bolt w/black xylan	2
5/16-18 nylock nut w/black xylan	2
5/16 uss flat washer w/black ox	4
#vc300-8 5/16" bolt size 1/2" lg vinyl cap	2
Security Cable	1

All Mounting Accessories are sold seperately

Unit Common Description	Units Per Model
Inground Mount or Surface Mount	1
5/16-18 x 1 1/2" tap bolt w/black xylan	4
5/16-18 nylock nut w/black xylan	4
5/16 uss flat washer w/black ox	8
#vc300-8 5/16" bolt size 1/2" lg vinyl cap	4

Suggested Tools



Open Face Wrench



Socket Wrench

Skyline Trash Receptacle



-  Bolt (HW01)
-  Nut (HW02)
-  Washer (HW03)
-  Bolt Cap (HW04)



Flattop



Dome Top - Plastic



Dome Top - Steel



Bonnet Top



Ash Bonnet Top



Liner



Inground Mount



Surface Mount

Specification - Written

Trash Receptacle Material: Outer frame is made from 3/4" x 2" rolled form angle iron.

- Slatted Steel - Inside material is 11 gauge Slatted Steel. Bracing is 1-1/2" Solid Steel flat bar. All MIG welded.

Trash Receptacle Coating:

- Advantage Coating - Advantage Coating is our proprietary coating. This state-of-the-art coating will not chip, crack or peel. It doesn't have any drips or runs, and it is the most durable coating on the market. The Advantage coating comes with a 7 year Warranty and is available in 13 Different Colors.
- Industry Standard Coating - the Industry Standard line is coated with a Premium Polyethylene Coating. The Industry Standard coating comes with a 5 year warranty and is available in 9 different colors
- Powder Coat Finish - Premium High Quality Powder Coat Finish Electrostatically Applied with 13 Different Colors to choose from.

Flattop: 14 gauge Solid Formed Steel. Advantage Coating, Industry Standard Coating, or Powder Coat Finish

Dome Top - Plastic: HD Blow Molded Polyethylene Plastic.

Dome Top - Steel: 14 gauge Formed Steel. Advantage Coating, Industry Standard Coating, or Powder Coat Finish

Liner: HD Polyethylene Plastic

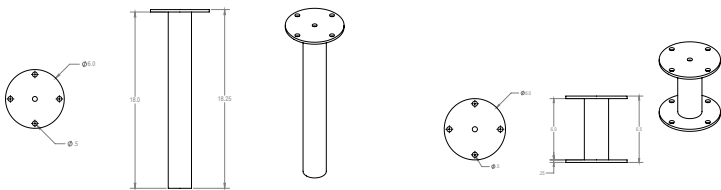
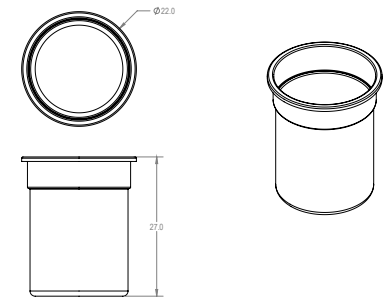
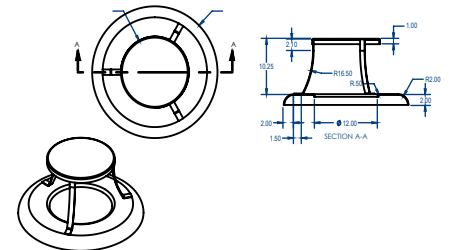
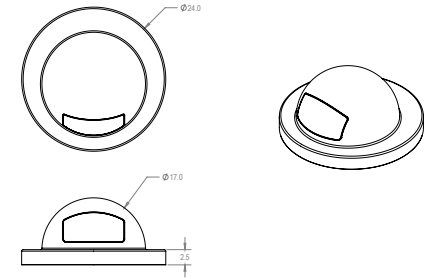
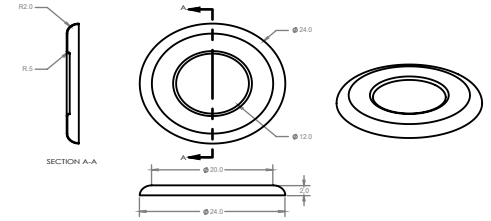
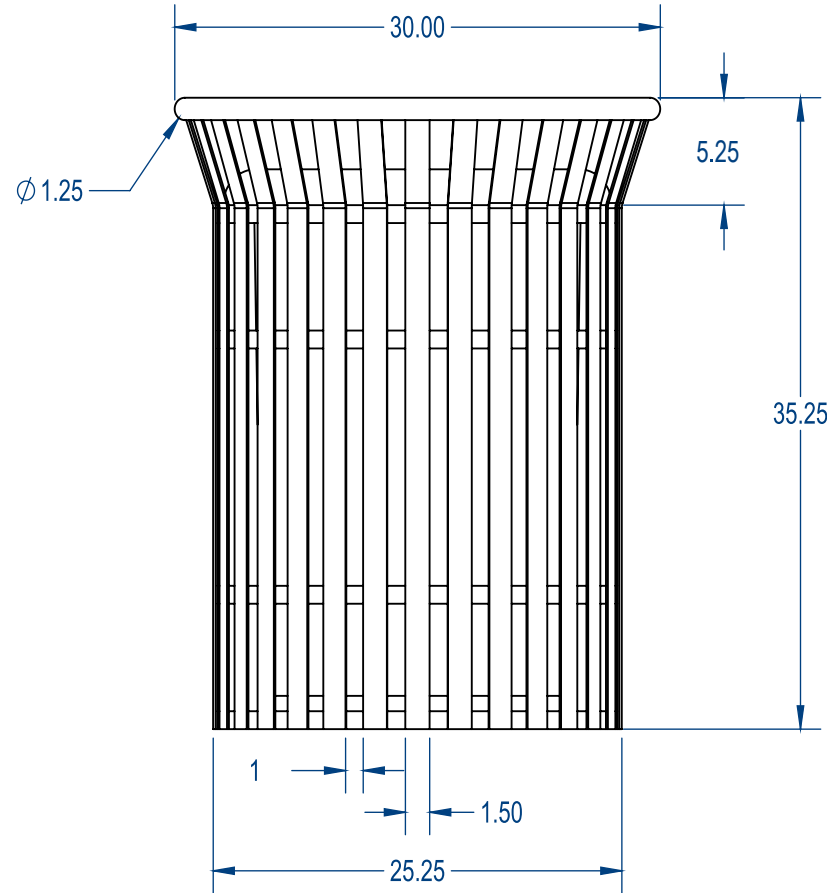
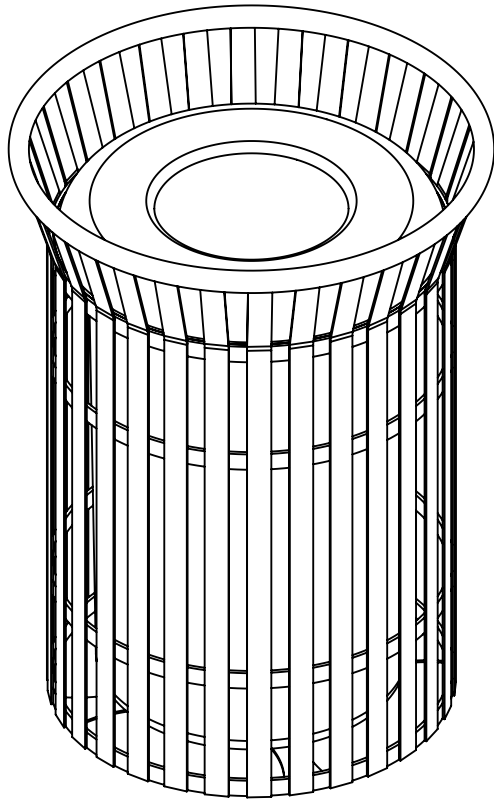
Inground Mount: 2-3/8" Tubing with 11 gauge mounting bracket - Powder Coat Finish.

Surface Mount: 2-3/8" Tubing with 11 gauge mounting brackets - Powder Coat Finish.

Hardware: All hardware is Xylan coating black hardware for extra protection and strength

Dimension: 32 Gallon Trash Receptacle Overall Dimension: 30" H, 22" Diameter

Specification - Drawing



Assembly Instructions

- 1. Trash Receptacle Comes in One Piece**
- 2. If Top is ordered: Attached Security Cable at one in to the top using hardware provided and a pre-drilled bolt hole on the top.**
- 3. Attach the other end of the security cable to the Trash Receptacle using either the expanded metal or punched steel and the hardware provided. Leave enough slack in the cable to be able to remove the lid.**
- 4. If Inground Mount or Surface Mount is ordered: Attach Mounting by lining up the bolt hole pattern on the mount to the bolt hole pattern on the bottom of the Trash Receptacle and bolt together by using hardware provided.**
- 5. Liner is one piece. Place Liner in Trash Receptacle. The Top of the liner will rest on the lip of the Trash Receptacle.**

Installation Safety:

Please Follow Installation Instructions provided by Manufacturer
It is recommended that Product is installer by an experienced installer

Product should be inspected at the time of Delivery, do not install and damaged on defective parts or products.

All Hardware for proper assembly (not installation) is provided. Use hardware that is included with this product.

Product Maintenance:

Maintenance inspection should be performed at a minimum of once a year.

Cleaning, when necessary can be performed with warm water and most household cleaners, avoid any harsh chemicals such as paint remover and acetone. Contact Manufacturer before cleaning to determine if cleaning product is OK for use.

Any surface rust that may occur should be removed and repainted. Contact Manufacturer for touch up paint or any other recommended paints.

Contact Manufacturer for instructions on removing vandalism such as spray paint.

In the case that the coating is damaged, contact Manufacturer for instructions for repair.

Bolts and nuts should be checked on a regular basis to maintain proper tightness.