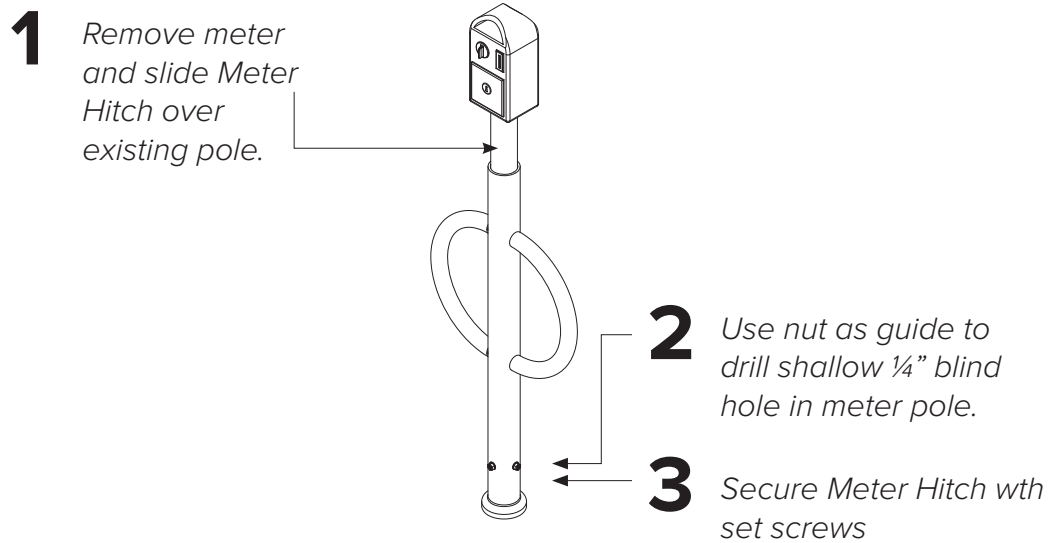
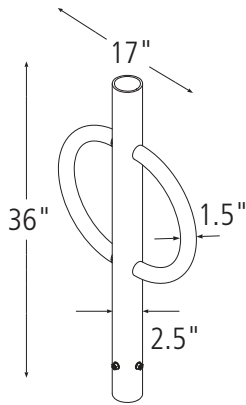


## METER HITCH

# Installation Instructions

---





**Capacity** 2 Bikes

**Materials**



Centerbeam: 2.5" schedule 40 pipe

**Please specify your post outside diameter and height when ordering**

**Finishes**



An after fabrication hot dipped galvanized finish is our standard option. 250 TGIC powder coat colors, and thermoplastic coating are also available as alternate options.

Our powder coat finish assures a high level of adhesion and durability by following these steps:

1. Sandblast
2. Epoxy primer electrostatically applied
3. Final thick TGIC polyester powder coat

**Installation Methods**

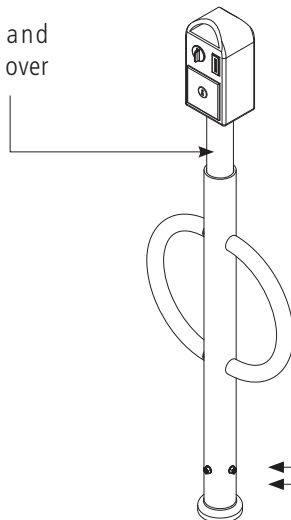


Meter Hitch slides over existing 2.38" OD parking meter poles. Two tamper-resistant set screws secure the Meter Hitch to the parking meter pole.



To make your intended usage clear to everyone, consider a Meter Hitch with the word "BIKE" welded into the ring.

- 1** Remove meter and slide Meter Hitch over existing pole.



- 2** Use nut as guide to drill shallow 1/4" blind hole in meter pole.

- 3** Secure Meter Hitch with set screws