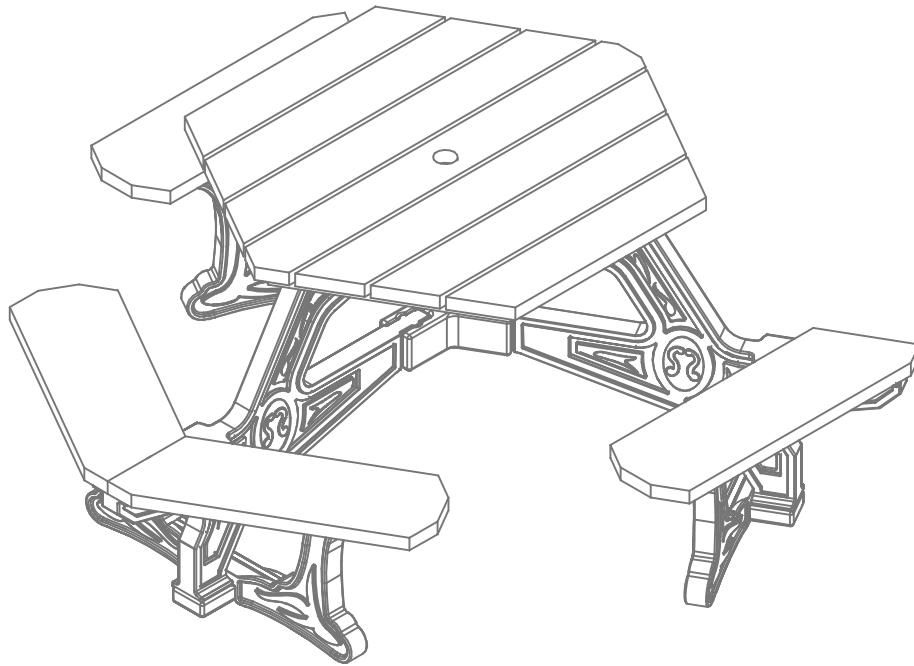


Econo-Mizer Plaza Handicap Picnic Table

For Fastener Pack
(FP-EPZHA-CU-02)



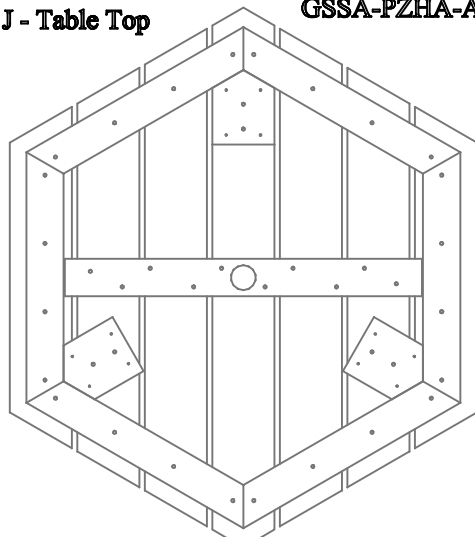
Congratulations ! !

You have just purchased the finest recycled plastic
picnic table available. Enjoy ! ! !

Before assembly, please make sure all components are included.

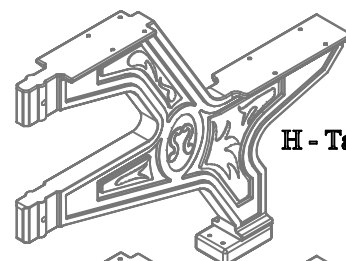
(1) - One Table Top
GSSA-PZHA-A-00

J - Table Top

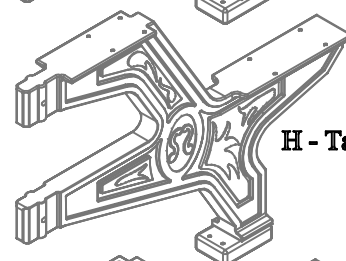


(1) - One Fastener Pack
FP-EPZHA-CU-02

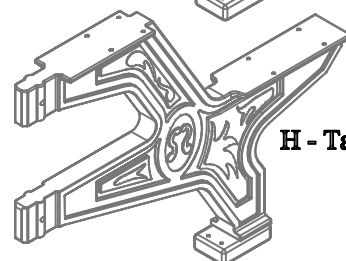
FP - Fastener Pack



H - Table Leg



H - Table Leg

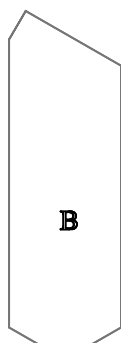


H - Table Leg

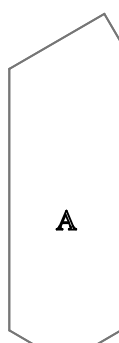
(3) - Three Table Legs
GSSA-PZ-B-01

(1) - One Short Right Seat
OTP-LWP-B-02

(1) - One Short Left Seat
OTP-LWP-C-02



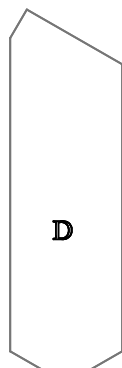
B



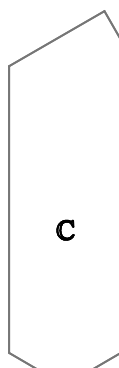
A

(1) - One Long Right Seat
OTP-LWPHA-D-02

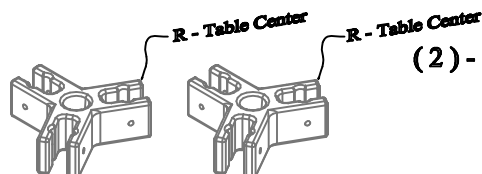
(1) - One Long Left Seat
OTP-LWPHA-A-02



D



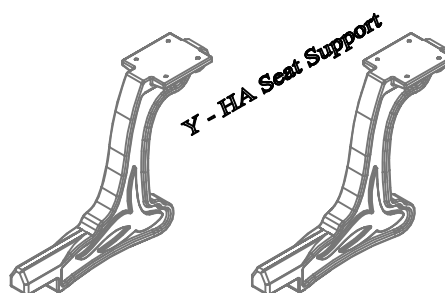
C



R - Table Center

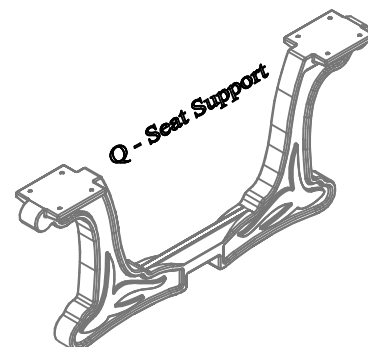
R - Table Center

(2) - Two Table Centers
PS-GSCP-A-01



Y - HA Seat Support

(2) - Two HA Seat Supports
PS-GSSS-B-01



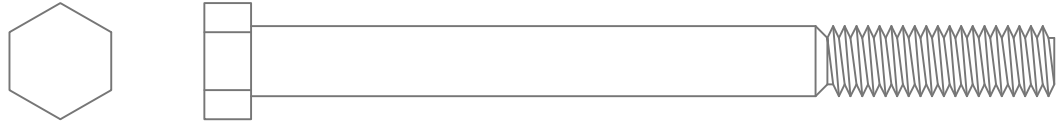
Q - Seat Support

(1) - One Seat Supports
PS-GSSS-A-01

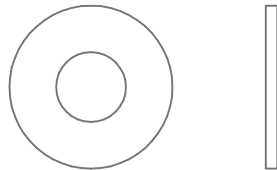
FS-EPZHA-CAP-02

Before assembly, please make sure all fasteners are included.

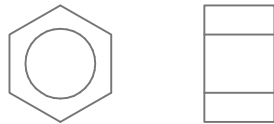
6 - 3/8" x 4-1/4" Hex Head Bolt



12 - 3/8" Flat Washer



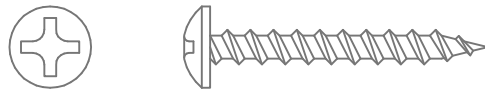
6 - 3/8" Nylon Lock Nut



6 - #12 x 3" Flat Head Phillips Screw



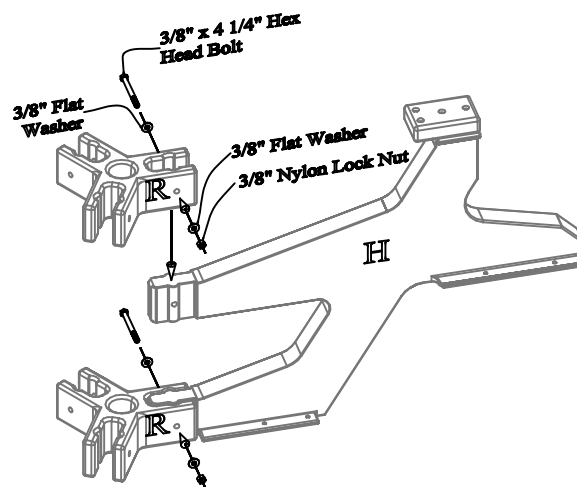
48 - #12 x 1 1/2" Pan Head Phillips Screw



Also needed for this assembly will be the following materials:

1 - #3 Phillips Drive Bit

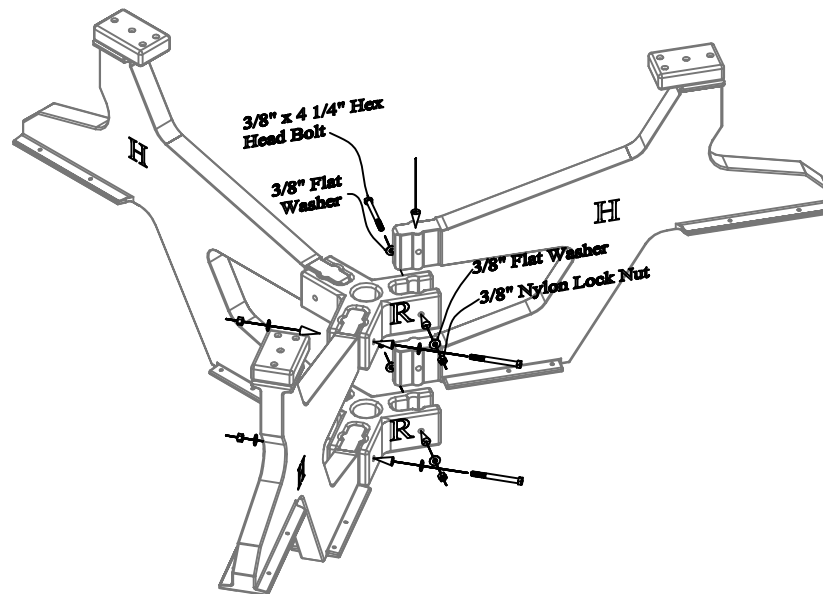
2 - 9/16" Socket Wrench



Step #1:

Slide (1) One Table Center on to each end of the Table Leg as shown above. Use (1) One 3/8" x 4 1/4" Hex Head Bolt and (1) One 3/8" Flat Washer along with (1) One 3/8" Flat Washer and (1) One 3/8" Nylon Lock Nut per hole to secure.

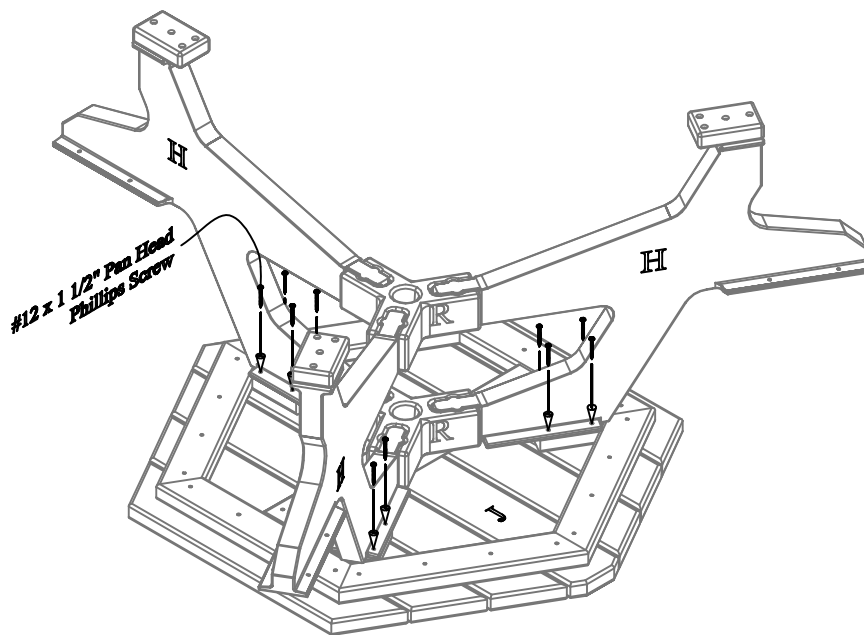
Do not tighten bolts completely. This will be done in a later step.



Step #2:

Slide the remaining Table Legs in to the Table Centers. Use (1) One 3/8" x 4 1/4" Hex Head Bolt and (1) One 3/8" Flat Washer along with (1) One 3/8" Flat Washer and (1) One 3/8" Nylon Lock Nut per hole to secure.

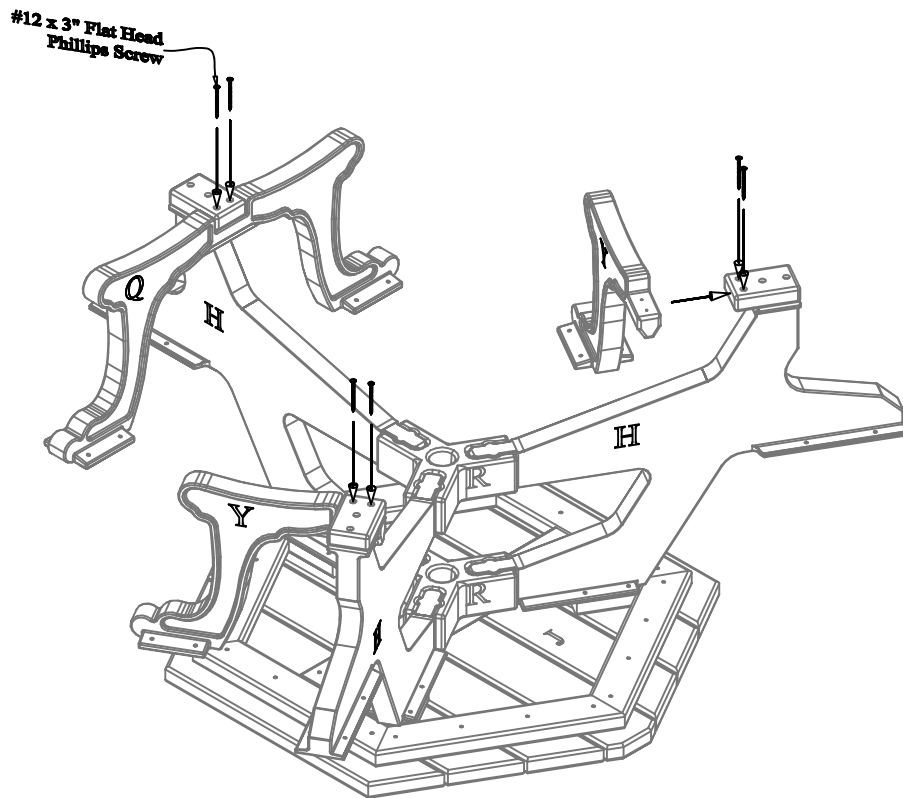
Do not tighten bolts completely. This will be done in a later step.



Step #3:

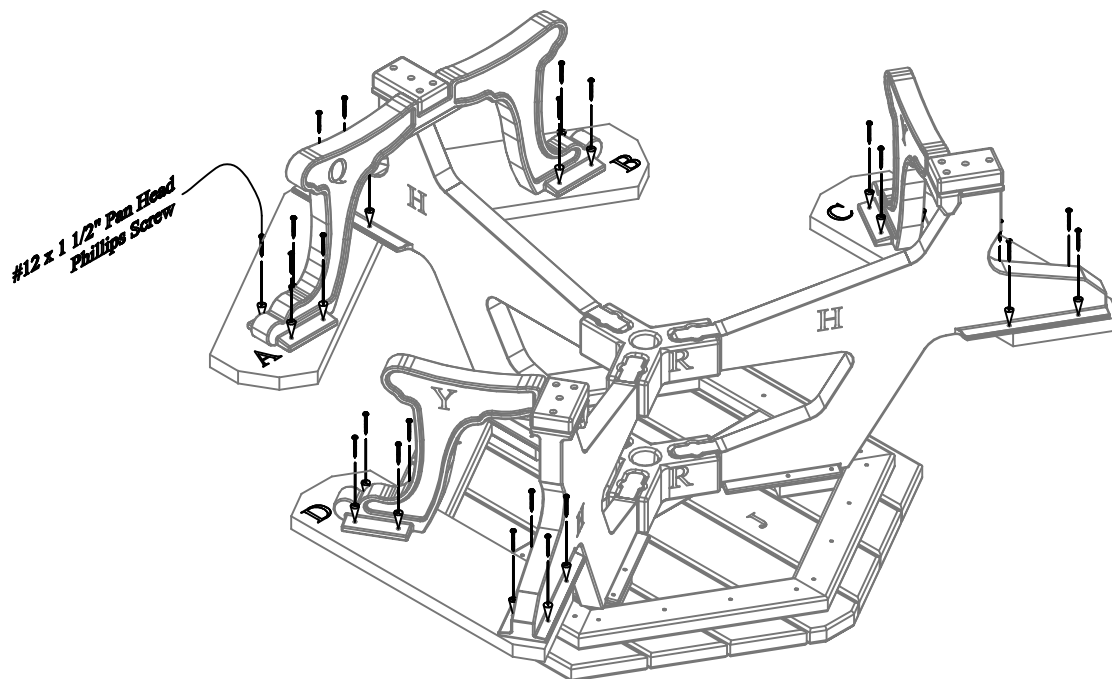
While the Table Top is upside down, place the leg assembly onto the Table Top as shown above. Align the pre-drilled holes in the Table Legs with the pilot holes in the Table Top. Use (1) One #12 x 1 1/2" Pan Head Screw per hole to secure.

Be sure to tighten all screws after completing this step.



Step #4:

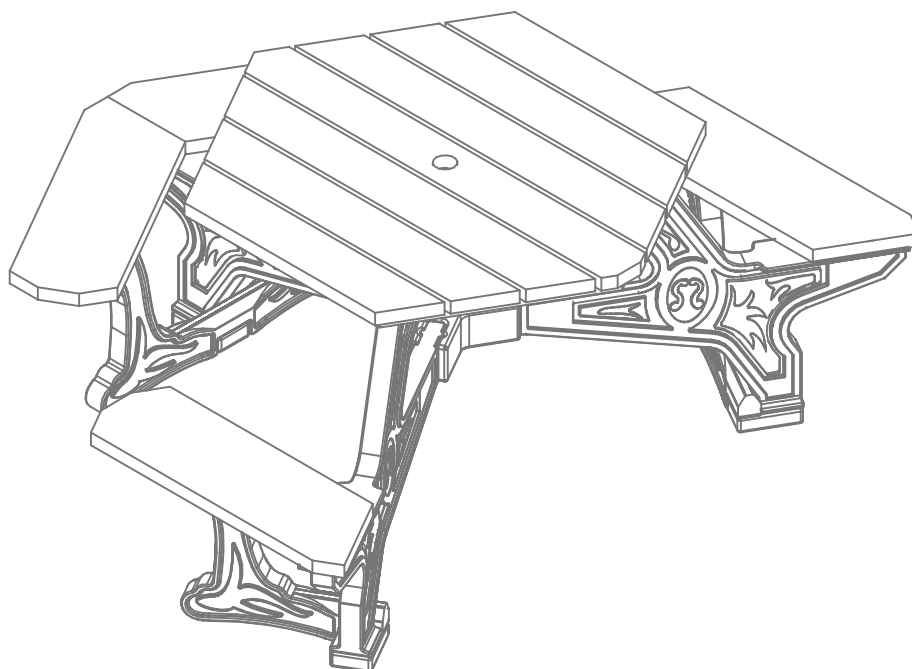
While the table is upside down, align the pre-drilled holes in the Table Leg to the pilot holes in the Seat Support as shown above. Use (1) One #12 x 3" Flat Head Screw per hole to secure.



Step #5:

Place the seats one at a time into position as shown above aligning the pilot holes with the predrilled thru holes in the legs and seat supports.

Use (1) One #12 x 1 1/2" Pan Head screw per hole to secure.



Step #6:

Flip the table upright onto it's frame. Please take caution while flipping the table. At this point in assembly the table weighs approximately 177 Pounds.