



FIRETRUCK SPRING RIDER

902-801

ITEM NO.	PART NUMBER	PART DESCRIPTION	QTY.
1	904-804	Firetruck Body	1
2	904-805	Seat	1
3	904-806	Side Panels	2
4	904-807	Ladder	2
5	904-809	Steering Wheel	2
6	904-808	Tire	6
7	903-811	Foot Rest (male)	2
8	903-810	Foot Rest (female)	2
9	363-950	Spring Assy.	1
10	336-017	Corner Bracket	8
11	116-529	5/16" x 3/4" Buttonhead Bolt	12
12	216-512	5/16" x 1" Buttonhead Nut	21
13	116-535	5/16" x 1-1/2" Buttonhead Bolt	4
14	116-555	5/16" x 3-1/2" Buttonhead Bolt	3
15	116-545	5/16" x 2-1/2" Buttonhead Bolt	2
16	316-501	5/16" Flat Washer	21
17	316-601	3/8" Flat Washer	25
18	196-644	3/8" x 8" Anchor Bolt	4
19	416-350	3/16" Socket Key	2
20	216-601	3/8" Hex Nut	4
21	226-602	3/8" Nylon Locknut	4
22	516-400	Loctite	4

Note: Use red locktite on all hardware during installtion. Make sure installtion is correct before using locktite.

SPECIFICATIONS

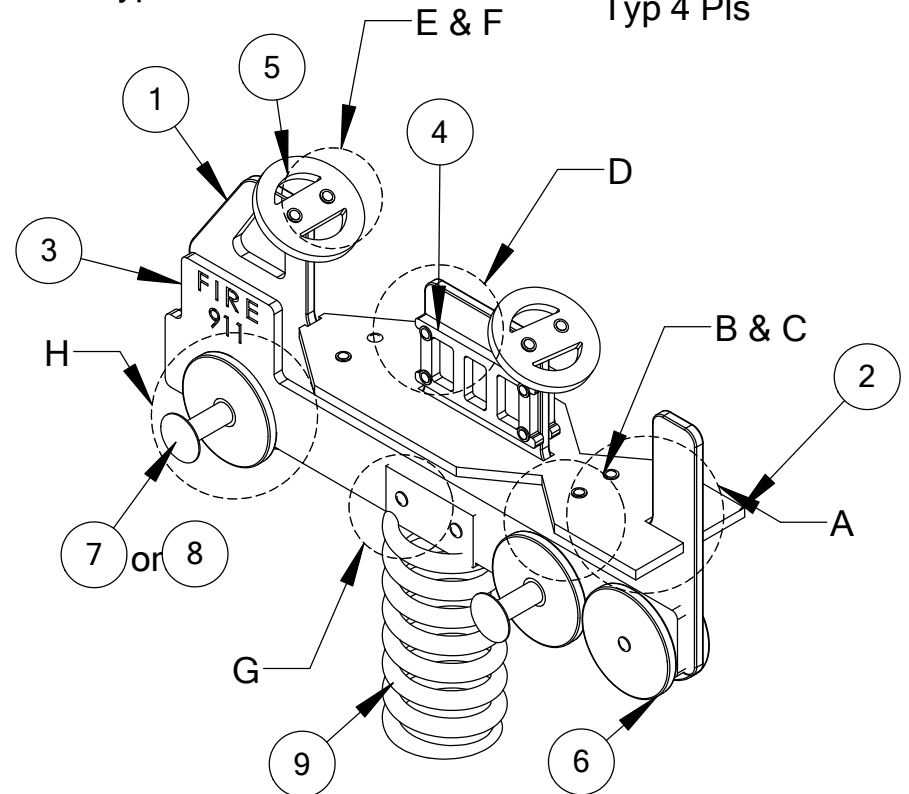
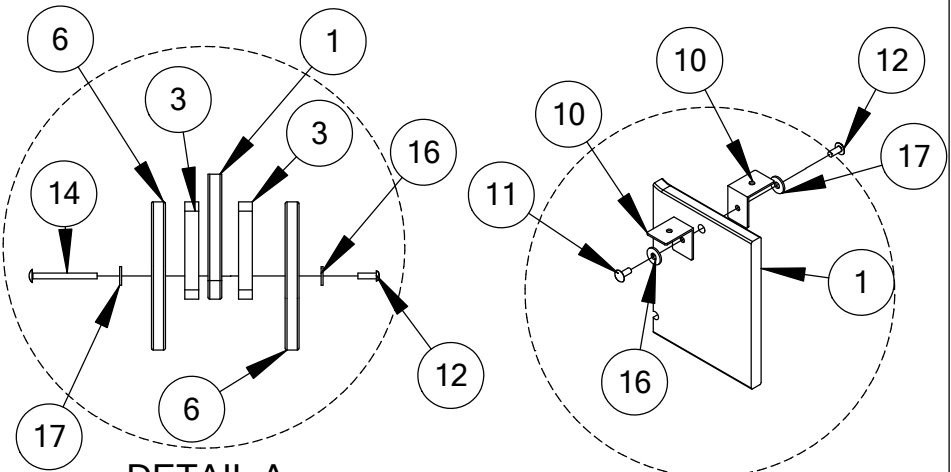
Panels: Made from 0.75" high-density polyethylene with UV inhibitor.

Foot Rests: Powder coated 1-3/8" O.D. pipe.

Hardware: Nickel coated.

Weight: 95lbs.

Required Area 13' x 16'



Sheet 1 of 2

