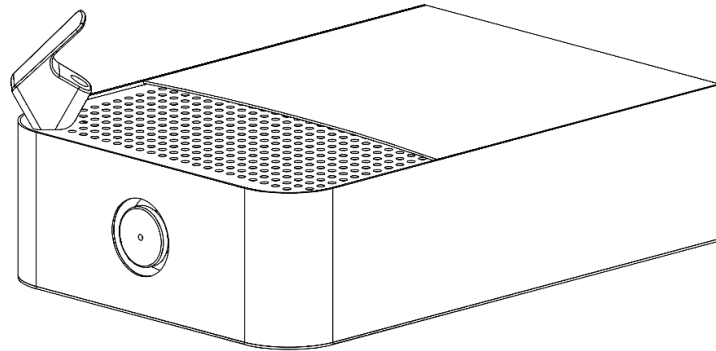


# OWNERS MANUAL & INSTALLATION GUIDE

## WALL DRINKING FOUNTAIN



GT1400

GlobalTap Bottle Fillers and Fountains are among the most hassle free to install on the market today. To insure that these models are installed correctly, PLEASE READ THESE SIMPLE INSTRUCTIONS BEFORE STARTING THE INSTALLATION. CHECK YOUR INSTALLATION FOR COMPLIANCE WITH PLUMBING, ELECTRICAL AND OTHER APPLICABLE CODES. After installation, leave these instructions with the units for future reference.

## IMPORTANT

### IMPORTANT! INSTALLER PLEASE NOTE:

ALL SERVICE TO BE PERFORMED BY AN AUTHORIZED SERVICE PERSON.

The grounding of electrical equipment such as telephone, computers, etc., to water lines is a common procedure. This grounding may be in the building or may occur away from the building. This grounding can cause electrical feedback into a fountain, creating an electrolysis which causes a metallic taste or and increase in the metal content of the water. This condition is avoidable by using the proper materials as indicated. Any drain fittings provided by the installer should be made of plastic to electrically isolate the fountain from building's plumbing system.

**PARTS LIST:**

1 Gt1400 Drinking fountain, 1 Filter Cartridge, 1 Plastic drain elbow, 1 Torx driver, 1 Wall bracket.

**RECOMMENDED TOOLS:**

Level, Drill, 3/8" Drive w/ socket set, Slip joint pliers.

**REQUIRED PARTS:**

3/8" screws (FOR WOOD,STEEL OR CONCRETE DEPENDING ON WALL). A 1-1/4" trap must be used after waste bend. 3/8" tubing(TO BE USED FOR WATER SUPPLY INLET).

**PRODUCT INSTALLATION:**

When installing this product, local, state or federal codes should be adhered to.

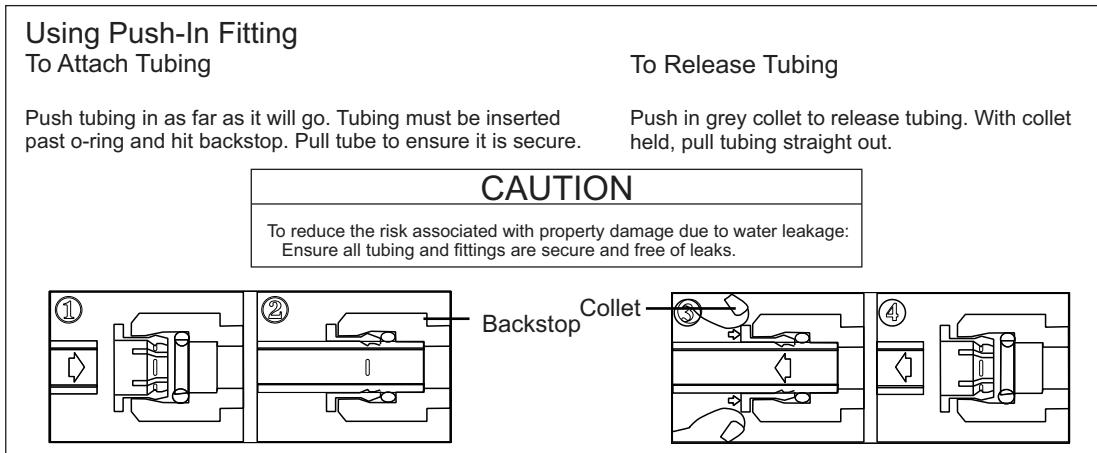
1. These units are to be mounted on a smooth, flat, Finished surface with adequate support structure. NOTE: Mounting structure must be capable of supporting 300 lb. load on fountain.
2. Install shut-off valve on water supply. (Not furnished).
3. Install unit using 3/8" minimum screws or bolts. (Not Furnished)
4. Connect water supply and waste pipe. Water connection and drain must comply with local codes.
5. Turn on water supply and check all connections for leaks.

**CAUTION:** This unit is rated for inlet water pressure of 20-105 PSI. A pressure reducing regulator should be used if the inlet water supply exceeds 105 PSI. Any damage caused by reason of connecting this product to supply line pressures higher than 105PSI and lower than 20PSI is the responsibility of the installers.

6. Water supply 3/8" O.D. Plastic pex tubing.
7. Waste is 1-1/4" IPS. Contractors to supply waste trap and service stop valve in accordance with local code.
8. Connecting line to be made of unplated copper and should be thoroughly flushed to remove all foreign matter before being connected to unit. This unit is manufactured in such a manner that it does not in any way cause taste, odor, color, or sediment problems.

**REPLACEMENT FILTER CARTRIDGE**

Cartridge: Ap Easy - C-LC Cartridge system, Manufactured by 3M Purification, Inc.  
Call 800-832-7383 to reorder cartridges.



**CLEANING:**

The cleaning of Globaltap units should be done with a non-acidic bathroom cleaner

**WARRANTY:**

All Globaltap units come with a 2 year manufactures warranty on all steel, 1 year on all internal parts.

# Performance Data Sheet

**Models: LC and LC Cooler** Use Replacement Cartridge C-LC  
 The concentration of the indicated substances in water entering the system was reduced to a concentration less than or equal to the permissible limit for water leaving the system as specified in NSF/ANSI Standard 42 and Standard 53.

System tested and certified by NSF International against NSF/ANSI Standard 42 and Standard 53 for the reduction of substances listed below.



Capacity 750 Gallons (2,839 Liters) Contaminant Reduction Determined by NSF testing.

Contaminant Reduction	Average Influent	NSF/ANSI Specified Challenge Concentration	Avg % Reduction	Average Product Water Concentration	Max Permissible Product Water Concentration	NSF Reduction Requirements	NSF Test Report
Chlorine Taste and Odor	2.0 mg/L	2.0 mg/L ± 10%	97.5%	0.05 mg/L	N/A	≥ 50%	J-000566501
Nominal Particulate Class I, ≥0.5 to < 1.0 µm	13,666,667 pts/mL	At least 10,000 particles/mL	98.9%	143,333 pts/mL	N/A	≥ 85%	J-000566506
Cyst*	122,500 cysts/L	Minimum 50,000 cysts/L	99.99%	1 cyst/L	N/A	≥ 99.95%	J-000566513
Lead @ pH 6.5	0.153 mg/L	0.15 mg/L ± 10%	99.3%	0.001 mg/L	0.010 mg/L	N/A	J-000566515
Lead @ pH 8.5	0.150 mg/L	0.15 mg/L ± 10%	99.3%	0.001 mg/L	0.010 mg/L	N/A	J-000568784

\* Based on the use of *Cryptosporidium parvum* oocysts

Application Guidelines	Water Supply Parameters
Service Flow	0.75 gpm (2.8 lpm)
Water Supply	Potable Water
Water Pressure	25 - 120 psi (172 - 827 kPa)
Water Temperature	40° F - 100° F (4.4° C - 38° C)

It is essential that the manufacturer's recommended installation, maintenance and filter replacement requirements be carried out for the product to perform as advertised. See Installation Manual for Warranty information.

**Note:** While the testing was performed under standard laboratory conditions, actual performance may vary.

Replacement Cartridge: C-LC. For estimated costs of replacement elements please call 1-800-222-7880 or visit our website at [www.cuno.com](http://www.cuno.com)



### WARNING

To reduce the risk associated with ingestion of contaminants:

- Do not use with water that is microbiologically unsafe or of unknown quality without adequate disinfection before and after the system. Systems certified for cyst reduction may be used on disinfected water that may contain filterable cysts.

EPA Establishment Number 070595-CT-001

### CAUTION

To reduce the risk associated with property damage due to water leakage:

- Read and follow Use Instructions before installation and use of this system.
- Installation and use MUST comply with all state and local plumbing codes.
- Do not install if water pressure exceeds 120 psi (827 kPa). If your water pressure exceeds 80 psi, you must install a pressure limiting valve. Contact a plumbing professional if you are uncertain how to check your water pressure.
- Do not install where water hammer conditions may occur. If water hammer conditions exist you must install a water hammer arrester. Contact a plumbing professional if you are uncertain how to check for this condition.
- Do not install on hot water supply lines. The maximum operating water temperature of this filter system is 100° F (38° C).
- Protect filter from freezing. Drain filter when temperatures drop below 40°F (4.4°C).

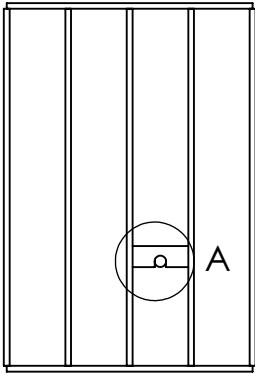
The disposable filter cartridge must be replaced every 6 months, at the rated capacity or if a noticeable reduction in flow rate occurs.

Parts and service available from:

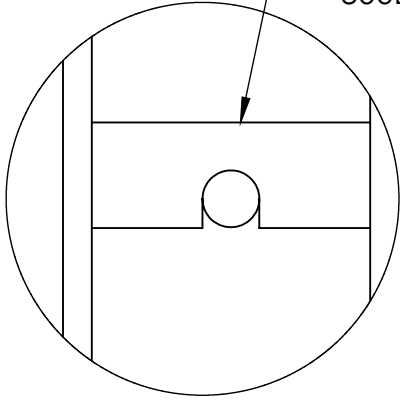


CUNO Incorporated  
 400 Research Parkway  
 Meriden, CT 06450 U.S.A  
 Toll Free: 1-800-222-7880  
 Worldwide: 203-237-5541  
[www.aquapure.com](http://www.aquapure.com) • [www.cuno.com](http://www.cuno.com)

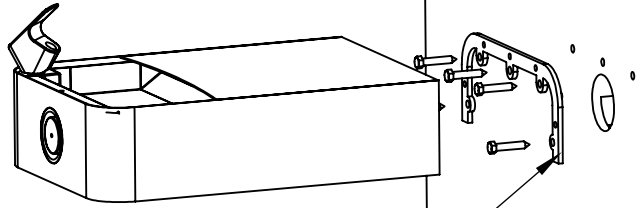
CUNO is a trademark of 3M Company used under license.  
 3M is a trademark of 3M Company.  
 NSF is a trademark of NSF International.  
 © 2008 3M Company. All rights reserved.  
 INSTR2140 0209



BACKING REQUIRED  
FOR MOUNTING UNIT  
CAPABLE OF HOLDING  
300LBS.



DETAIL A  
SCALE 1 : 10



MOUNTING  
BRACKET

